

Last updated:
5/15/06

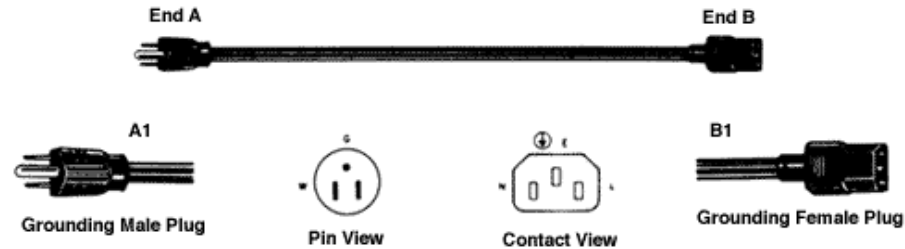
- Switchcraft Home
- About Us
- Products
- What's New
- Search
- Contact Us
- Employment
- Check Distributor Stock

Switchcraft®

5555 N. Elston Ave.
Chicago, IL 60630
Phone:
773.792.2700
Fax:
773.792.2129

Switchcraft®

[Previous Page](#) | [End of Section - Return to Index](#)



AC LINE CORDS

Nema 5-15P P2723 (typical)

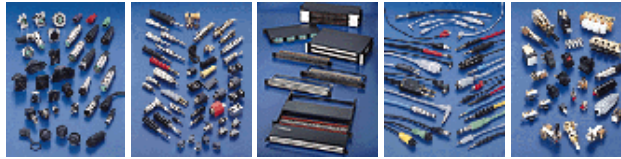
Designed for primary power connections in U.S., Canadian and European electrical/electronic equipment (test equipment, business machines, computers and appliances). All cords are UL and CSA listed.

| Description | Part Number | Cord Length | | AWG (Stranding) (Dia. in mm) | Nominal Outside Dimension | | Rating W | Cordage and Color |
|---|-------------|-------------|------|------------------------------|---------------------------|------|-----------------|-------------------|
| | | feet | m | | inches | mm | | |
| UL and CSA listed; National Stock Number 6150-00-351-3405 | P2392 | 7.5 | 2.29 | 18(41x343) (1.19) | .253 | 6.43 | 1250 (10A,125V) | SVT Vinyl Black |
| European color coding (Brown, Light Blue, Green with Yellow stripe) | P2723 | 7.5 | 2.29 | 14(41x30) (1.91) | .385 | 9.78 | 1875 (15A,125V) | SJT Vinyl Black |

Mates with EAC233S, -309, -311, -315, -319, -323, -327, -333, -333S, -409 and -411

[Previous Page](#) | [End of Section - Return to Index](#)

To search a category please click on the corresponding icon:



| [Connectors](#) | [Jacks and Plugs](#) |
| [Patch Panels, Patch Kits & Jackfields](#) | [Cable Assemblies and Patch Cords](#) | [Switches](#) |

All products shown are covered by Switchcraft's limited lifetime warranty.

| [Switchcraft home](#) |
[About Us](#) | [Products](#) | [What's New](#) | [Search](#) | [Contact Us](#)