




SMT POWER INDUCTORS

Unshielded Drum Core - P0770 Series



-  **Height:** 2.9mm Max
-  **Footprint:** 6.6mm x 4.5mm Max
-  **Current Rating:** up to 2.9A
-  **Inductance Range:** 1.0 μ H to 220 μ H

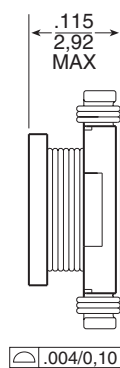
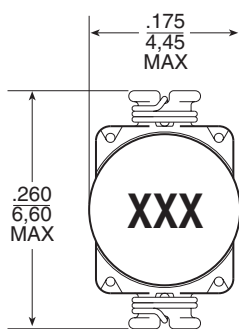
Electrical Specifications @ 25°C — Operating Temperature -40°C to +130°C

Part ^{6,7} Number	Inductance @ I _{PK AC} (μ H \pm 20%)	I _{rated} ⁵ (A)	DCR (MAX) (m Ω)	Saturation Current (A) @ 25°C	Heating Current (A)
P0770.102	1.0	2.90	50	2.90	2.90
P0770.152	1.5	2.60	50	2.60	2.80
P0770.222	2.2	2.30	70	2.30	2.40
P0770.332	3.3	2.00	80	2.00	2.00
P0770.472	4.7	1.50	90	1.50	1.50
P0770.682	6.8	1.20	130	1.20	1.40
P0770.103	10	1.10	160	1.10	1.10
P0770.153	15	0.90	230	0.90	1.20
P0770.223	22	0.70	370	0.70	0.80
P0770.333	33	0.58	510	0.58	0.60
P0770.473	47	0.50	640	0.50	0.50
P0770.683	68	0.40	860	0.40	0.40
P0770.104	100	0.30	1270	0.31	0.30
P0770.154	150	0.25	2000	0.27	0.2
P0770.224	220	0.20	3110	0.22	0.20

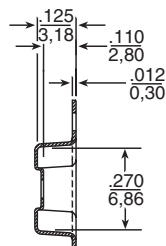
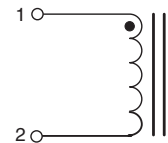
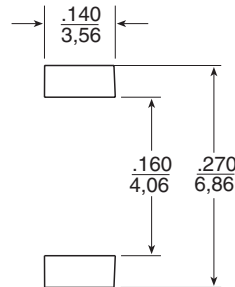
- NOTES: 1. The temperature of the component (ambient plus temperature rise) must be within the specified operating temperature range.
 2. Inductance tested at 100kHz, 10 mV_{RMS}
 3. Inductance drop = 10% typical at the Saturation Current
 4. ΔT = 15°C rise typical at the Heating Current
 5. The rated current is the lower of the saturation or heating current.
 6. Optional Tape & Reel packaging can be ordered by adding a "T" suffix to the part no. (i.e. P0770.102 becomes P0770.102T). Pulse complies to industry standard tape and reel specification EIA481.
 7. To order RoHS compliant part, add the suffix "NL" to the part number (i.e. P0770.102 becomes P0770.102NL and P0770.102T becomes P0770.102NLT).

Mechanical

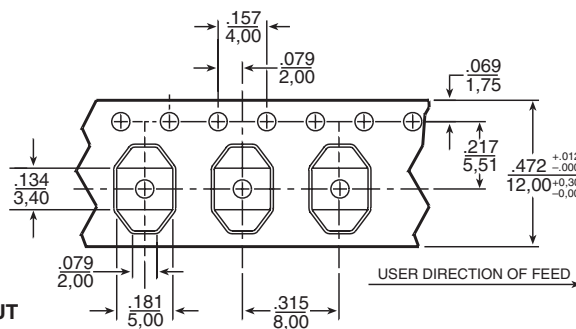
Schematic



SUGGESTED PAD LAYOUT



TAPE & REEL LAYOUT



Weight 0.2 grams
 Tape & Reel 2500/reel

Dimensions: $\frac{\text{Inches}}{\text{mm}}$
 Unless otherwise specified,
 all tolerances are $\pm \frac{.010}{0,25}$