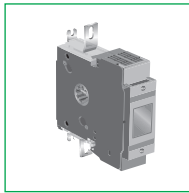


Short form catalogue

Switchgear OS switch fuses

Switchgear

OS Switch fuses



Contents

Introduction	4
Overview	6
Features	8
OS Switches fuses 20 - 1250A	10
Accessories	17

Switch Fuses 16 to 4000 Amperes

High performance, compact solution



The most compact solution

Possible thanks to a uniquely short current path and a double-sided spring construction combined with a small amount of components. ABB's switches therefore have a small footprint area, allowing installation in confined spaces.

- ▶ Space savings mean cost reduction

Quick and perfect installation every time

- Base, door or DIN rail mounted
- Installation in any direction: horizontal, vertical or even at the ceiling

- A wide variety of accessories to customize the installation such as handles shafts, auxiliary contacts, cabling accessories and additional power poles.

- ▶ Flexibility to plan your installation

Switches from 16 to 125 Amperes can be snap-on or screw-mounted and switches from 160 to 4000 Amperes have adjustable feet that allow top or side mounting. Snap-on accessories available.

- ▶ Easy to install



ABB offers AC and DC rated switch-disconnectors suitable for diverse applications such as machinery, power distribution, switchboards, motor control centers or photovoltaic installations.

High performance

ABB switch-disconnectors have a powerful construction and quick-make/ quick-break operation features that enhance performance.

Full I_{th} ratings can be used in both open air and enclosures.

- ▶ There is no need of derating or increasing the size of the enclosure.

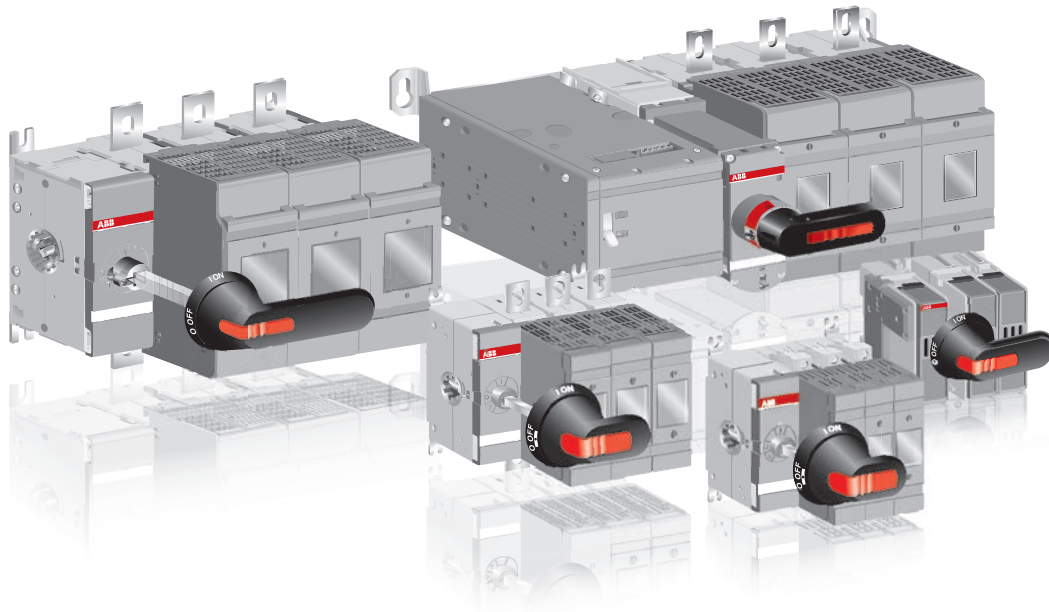
AC switch-disconnectors have full AC-23A current ratings for voltage levels up to 690/1000 V

- ▶ Suitable for diverse applications

ABB's offering includes manual and motorized switches from 16 to 4000 Amperes.



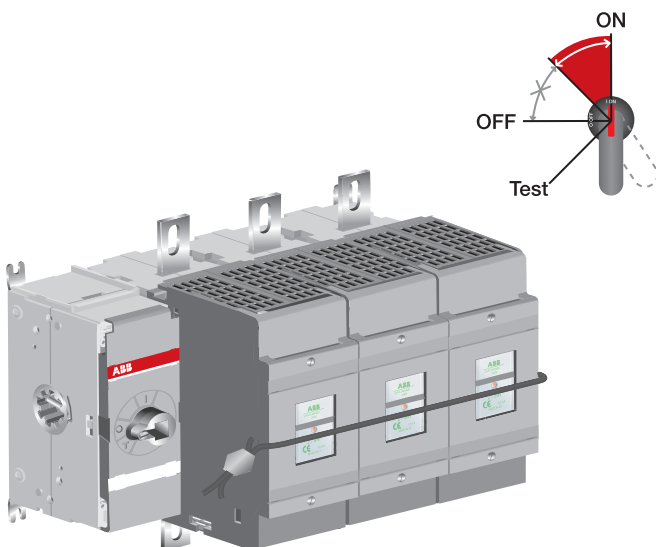
Features of OS switch fuses 16 ... 1250 A 690V



Features within the range of ABB switch fuses include single pole to four pole versions.

The switch fuse mechanism located in any position, increasing the ease of installation and adaptability to different types of cubicle designs (OS32G...1250).

A wide selection of accessories improve the usability of the switch fuses; 6 and 8- pole, changeover, by-pass and mechanically interlocked switch combinations can be built up by means of conversion kits.



The switch fuses are available for all types of fuse links, DIN, BS, NFC, UL, CSA. Switch fuses are also suitable for remote control by the motorized OSM versions.

Designed for safety

The switch fuse ensures safe operation, protecting both people and equipment.

Designed and based on substantial experience of electrical safety, the switch fuse eliminates the risk of electrical accidents:

- The fuse covers cannot be opened while the switch fuse is in the ON-position and can be sealed in the closed position.
- The double insulated external operating handle eliminates the risk of touching live parts outside the box.
- The handle indicates the position of the contacts with complete reliability in all situations.
- The frame is made of robust plastic with excellent mechanical and thermal properties.
- Voltage output pins (as standard)
- Pole markings as standard

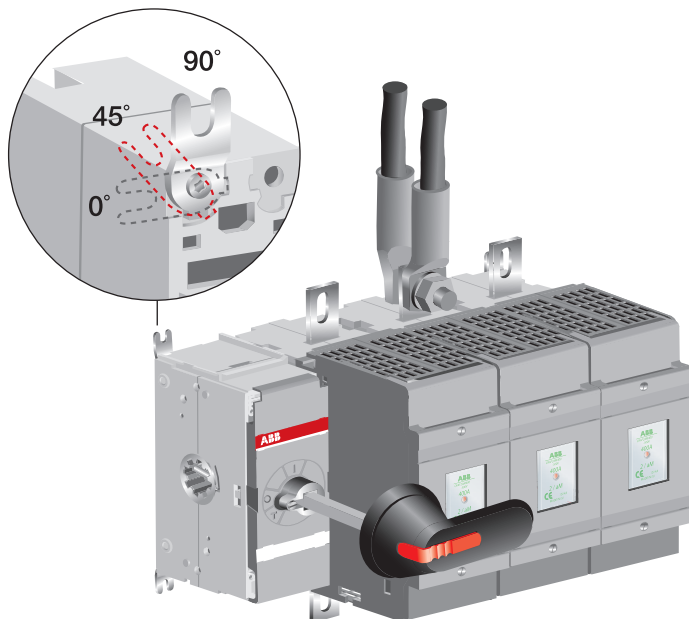
▶ You take no risks with OS16...1250 switch fuses

Switch fuses for extreme conditions - Numerous applications require switch fuses that can withstand extreme conditions. High voltages and high short circuit currents create a demand for superior performance without neglecting safety.

Easy, flexible installation

The OS 32...1250 switch fuse is easy to use and a snap to install according to your choice: the adjustable mounting feet allow both top and side mounting of the switch fuse.

The OS switch fuse offers you flexible cabling options. The high terminal positioning with space to the back plate simplifies the mounting of cables. It's also ideal for double cabling, which in turn saves on space.



Superior performance

- High CTI in supporting parts, resulting high U_i ratings
 - The contact constructions are optimal, regardless of fuse type, DIN, BS, NFC or UL-type
 - Meets the requirements for installation close to the main transformer up to 100 kA in heavy industry and in ships
- ▶ High performance level and smart design makes OS switch fuses suitable for all applications in low voltage networks.

Compact construction

- Intelligent construction in combination with a small number of components results in a very compact mechanism design
 - Very small footprint area
- ▶ Space savings mean cost reduction!

OS switch fuses

16 1250 A 690V

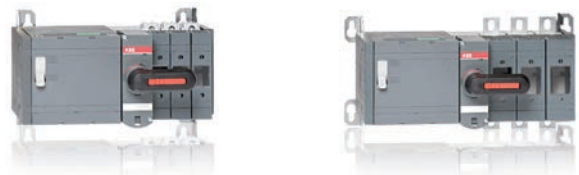
Manual operation



DIN	OS16FD	OS40FD	OS32GD	OS125GD
	OS35FD		OS63GD	OS160GD
BS	OS20FB		OS32GB	OS100GB
	OS32FB		OS63GB	OS125GB
				OS160GB
NFC	OS25FF		OS50GF	OS125GF
	OS32FF			
UL/CSA	OS30FACC		OS60GJ	OS100GJ
	OS30FAJ			

	OS Mini							OS							
Switch size [A]	16	20	25	30	32	35	40	32	50	60	63	100	125	160	
AC23/400 V [kW]	7.5	11		15	15	18,5		15	22	30			55	75	
AC23/415 V [kW]	7.5			15				15		30			55	55	75
480 V [HP]				15						30			60		
600 V [HP]				20						50			75		

Motor operation



DIN	OSM32GD	OSM125GD
	OSM63GD	OSM160GD
BS	OSM32GB	OSM100GB
	OSM63GB	OSM125GB
		OSM160GB
NFC	OSM50GF	OSM125GF

	OSM					
Switch size [A]	32	50	63	100	125	160

Accessories

Optional handles

Extended shafts

Auxiliary contacts

Fourth poles

N & PE terminals

Solid links

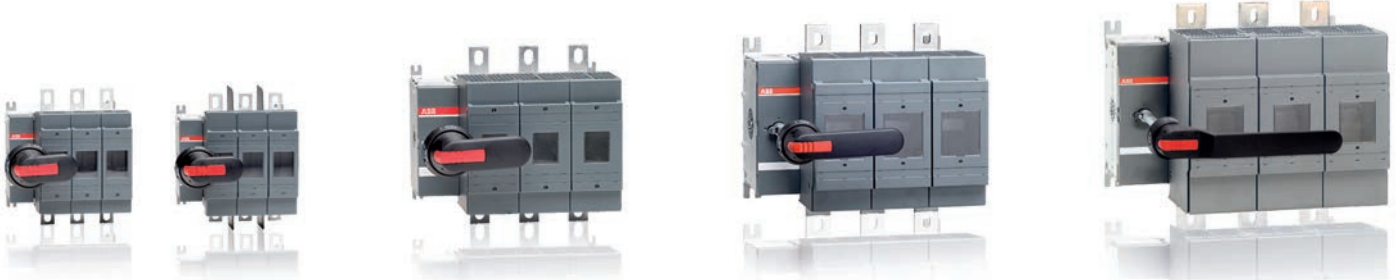
Terminal shrouds

Connecting accessories

Conversion kits

Blown fuse indicators

Locking accessories



OS200D

OS250D

OS200B

OS250B

OS400D

OS315B

OS400B

OS630D

OS800D

OS630B

OS800B

OS1250D

OS1250B

OS200J

OS400J

OS600J

OS800L

OS1200L

200 250

110 140

110 145

150

200

315 400

220

180 230

250

350

600 630 800

355 450

355 450

400 500

500 600

1200 1250

560

560

-

-



OSM200D

OSM250D

OSM200B

OSM250B

OSM400D

OSM315B

OSM400B

OSM630D

OSM800D

OSM630B

OSM800B

OSM1250D

OSM1250B

200 250

315 400






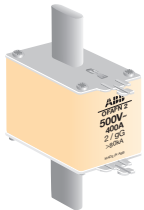
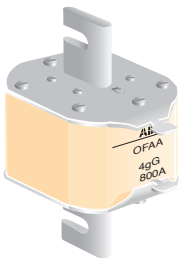
630 800

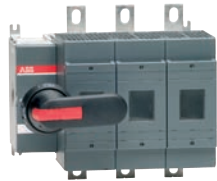
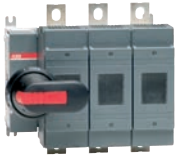
1250

Fuse and switch overview

2A...1250 A

For optimum performance ABB recommends using ABB OS switch fuses along side ABB fuses

											
Switch Size [A]	16	20	32	32	40	32	63	100	125	160	200
AC23/400V [kW]	7.5	-	15	15	18.5	15	30	-	55	75	75
AC23/415V [kW]	-	7.5	15	15	-	15	30	55	55	75	75
BS Switch Fuses	OS20FB_A1_			OS32FB_A2_		OS32GB_		OS100GB_			
	OS32FB_A1_			-		OS63GB_		OS125GB_			
	-			-		-		OS160GB_			
	-			-		-		OS200GB_			
DIN Switch Fuses	-			OS40FD_		OS32GD_		OS125GD_			
	-			-		OS63GD_		OS160GD_			
BS Fuses 	OFFNA1GG2			OFFNA2GG6		OFFNA2GG6		OFFNA4GG50			
	OFFNA1GG4			OFFNA2GG10		OFFNA2GG10		OFFNA4GG63			
	OFFNA1GG6			OFFNA2GG16		OFFNA2GG16		OFFNA4GG80			
	OFFNA1GG10			OFFNA2GG20		OFFNA2GG20		OFFNA4GG100			
	OFFNA1GG16			OFFNA2GG25		OFFNA2GG25		OFFNA4GG125			
	OFFNA1GG20			OFFNA2GG32		OFFNA2GG32		OFFNA4GG160			
	OFFNA1GG25			-		OFFNA3GG40		OFFNA4GG200			
	OFFNA1GG32			-		OFFNA3GG50		-			
-			-		OFFNA3GG63		-				
DIN 500V Fuses 	-			OFAF000H6		OFAF000H6		OFAF000H32			
	-			OFAF000H10		OFAF000H10		OFAF000H35			
	-			OFAF000H16		OFAF000H16		OFAF000H40			
	-			OFAF000H20		OFAF000H20		OFAF000H50			
	-			OFAF000H25		OFAF000H25		OFAF000H63			
	-			OFAF000H32		OFAF000H32		OFAF000H80			
	-			OFAF000H35		OFAF000H35		OFAF000H100			
	-			OFAF000H40		OFAF000H40		OFAF000H125			
	-			-		OFAF000H50		OFAF000H160			
	-			-		OFAF000H63		-			
DIN 690V Fuses 	-			OFAA000GG6		OFAA000GG6		OFAA000GG32			
	-			OFAA000GG10		OFAA000GG10		OFAA000GG35			
	-			OFAA000GG16		OFAA000GG16		OFAA000GG40			
	-			OFAA000GG20		OFAA000GG20		OFAA000GG50			
	-			OFAA000GG25		OFAA000GG25		OFAA000GG63			
	-			OFAA000GG32		OFAA000GG32		OFAA000GG80			
	-			OFAA000GG35		OFAA000GG35		OFAA000GG100			
	-			OFAA000GG40		OFAA000GG40		OFAA000GG125			
	-			-		OFAA000GG50		-			
	-			-		OFAA000GG63		-			



	200	250	315	400	630	800	1250
	110	140	-	230	355	450	560
	110	145	180	230	355	450	560
	OS200B_		OS315B_		OS630B_		OS1250B_
	OS250B_		OS400B_		OS800B_		-
	-		-		-		-
	-		-		-		-
	OS200D_		OS400D_		OS630D_		OS1250D_
	OS250D_		-		OS800D_		-
	OFFNB1GG50	OFFNB1GG100	OFFNC1GG400	On request			
	OFFNB1GG63	OFFNB2GG125	OFFNC2GG500	-			
	OFFNB1GG80	OFFNB2GG160	OFFNC2GG630	-			
	OFFNB1GG100	OFFNB2GG200	OFFNC3GG800	-			
	OFFNB2GG125	OFFNB3GG250	-	-			
	OFFNB2GG160	OFFNB3GG315	-	-			
	OFFNB2GG200	OFFNB4GG400	-	-			
	OFFNB3GG250	-	-	-			
	-	-	-	-			
	OFAF0H32	OFAF0H100	OFAF3H315	OFAF4H630			
	OFAF0H40	OFAF0H125	OFAF3H355	OFAF4H800			
	OFAF0H50	OFAF0H160	OFAF3H400	OFAF4H630			
	OFAF0H63	OFAF0H200	OFAF3H450	OFAF4H630			
	OFAF0H80	OFAF1H200	OFAF3H500	-			
	OFAF0H100	OFAF1H250	OFAF3H630	-			
	OFAF0H125	OFAF2H315	OFAF3H800	-			
	OFAF0H160	OFAF2H400	-	-			
	OFAF0H200	-	-	-			
	OFAF0H250	-	-	-			
	OFAA0GG50	OFAA0GG100	-	OFAA4GG500			
	OFAA0GG63	OFAA0GG125	OFAA3GG315	OFAA4GG630			
	OFAA0GG80	OFAA0GG160	OFAA3GG400	OFAA4GG800			
	OFAA0GG100	OFAA1GG200	OFAA3GG425	OFAA4GG1000			
	OFAA0GG125	OFAA1GG250	OFAA3GG500	-			
	OFAA0GG160	OFAA2GG315	-	-			
	OFAA1GG200	OFAA2GGH400	-	-			
	OFAA1GG250	-	-	-			
	-	-	-	-			
	-	-	-	-			

Switch fuses OS20...160 BS -type

Front operated switch fuses

Including terminal bolt kit (OS100...160), a black ON-OFF plastic handle and shaft as standard. The handle is IP65 protected, padlockable in the OFF-position and with door interlock in the ON-position. The shaft is adjustable for a range of installation depths.

Rated current AC-20...23 ≤ 690V [A]	Rated Power AC-23 400/500/690V [kW]	Fuse Size	No. of poles	Part Number	Product Hierarchy 2100002 Order Code
-------------------------------------	-------------------------------------	-----------	--------------	-------------	--------------------------------------

Mechanism between the poles - protected tunnel terminals, IP20

20	7.5/11/15	A1	3	OS20FB12A1-2	1SCA108790R1001
			4	OS20FB22A1N1	1SCA108796R1001
32	15/18/25	A1	3	OS32FB12A1	1SCA108840R1001
			4	OS32FB22A1N1	1SCA108853R1001
	15/18.5/22	A2	3	OS32FB12A2	1SCA108847R1001
			4	OS32FB12A2N1	1SCA108863R1001
32	15/18.5/22	A2, A3	2	OS32GB11P	1SCA116718R1001
			3	OS32GB12P	1SCA115331R1001
			4	OS32GB22N1P	1SCA115345R1001
63	30/37/55	A2, A3	2	OS63GB11P	1SCA116872R1001
			3	OS63GB12P	1SCA115325R1001
			4	OS63GB22N1P	1SCA114601R1001

Terminal bolt kit

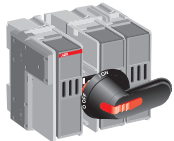
100	55/55/90	A2, A3, A4 ¹⁾	2	OS100GB11P	1SCA116851R1001
			3	OS100GB12P	1SCA114586R1001
			3+N	OS100GB12N3P	1SCA125486R1001
			4	OS100GB22N1P	1SCA114602R1001
125	55/75/110	A2, A3, A4 ¹⁾	2	OS125GB11P	1SCA116853R1001
			3	OS125GB12P	1SCA114603R1001
			3+N	OS125GB12N3P	1SCA123547R1001
			4	OS125GB22N1P	1SCA115903R1001
160	75/90/132	A2, A3, A4 ¹⁾	2	OS160GB11P	1SCA117430R1001
			3	OS160GB12P	1SCA115637R1001
			3+N	OS160GB12N3P	1SCA123461R1001
			4	OS160GB22N1P	1SCA115899R1001

Mechanism at the end of the switch, protected tunnel terminals, IP20

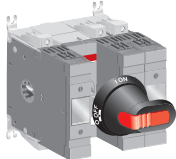
32	15/18.5/22	A2, A3	2	OS32GB02P	1SCA116721R1001
			3	OS32GB03P	1SCA115259R1001
			4	OS32GB04N1P	1SCA114610R1001
63	30/37/55	A2, A3	2	OS63GB02P	1SCA116854R1001
			3	OS63GB03P	1SCA115235R1001
			4	OS63GB04N1P	1SCA115238R1001

Terminal Bolt Kit

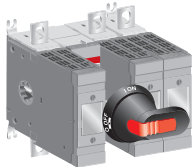
100	55/55/90	A2, A3, A4 ¹⁾	2	OS100GB02P	1SCA116723R1001
			3	OS100GB03P	1SCA114613R1001
			3+N	OS100GB03N3P	1SCA125531R1001
			4	OS100GB04N1P	1SCA114614R1001
125	55/75/110	A2, A3, A4 ¹⁾	2	OS125GB02P	1SCA116724R1001
			3	OS125GB03P	1SCA115634R1001
			3+N	OS125GB03N3P	1SCA122008R1001
			4	OS125GB04N1P	1SCA115901R1001
160	75/90/132	A2, A3, A4 ¹⁾	2	OS160GB02P	1SCA116725R1001
			3	OS160GB03P	1SCA115413R1001
			3+N	OS160GB03N3P	1SCA122010R1001
			4	OS160GB04N1P	1SCA115896R1001



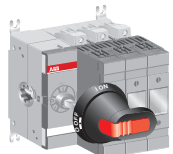
(OS Mini)
OS20...32FB12A1
OS32FB12A2
OS32FB12F1



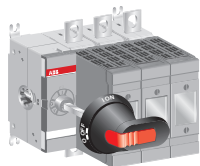
OS32G...63GB12P



OS100G...160GB12P

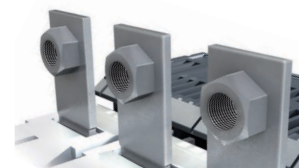


OS32G...63GB03P



OS100G...160GB03P

Switch fuses OS100...200 BS -type



► Model with integrated terminal nuts

Front operated switch fuses with integrated terminal nuts

These types (-42) have nuts integrated on the back of the terminals, for easy installation.

Including a black ON-OFF plastic handle and shaft as standard. The handle is IP protected, padlockable in OFF position and has door interlock in the ON-position and when padlocked. The shaft can be adjusted to different installation depth. The items OS_N3 include a detachable neutral link. The type and ordering numbers are for one piece.



OS100...200GB03P-42



OS100...160GB12P-42



OS100...200GB03N3P-42

Rated op.current AC-20...23 ≤ 690V [A]	Rated op. power AC23 400/500/690V [kW]	Fuse size	Number of poles	Part Number	Product Hierarchy 2100002 Order Code
---	---	-----------	--------------------	-------------	---

Mechanism between the poles

100	55/55/90	A2, A3, A4 ¹⁾	3+N	OS100GB12N3P-42	1SCA129910R1001
125	55/75/110	A2, A3, A4 ¹⁾	3+N	OS125GB12N3P-42	1SCA129914R1001
160	75/90/132	A2, A3, A4 ¹⁾	3+N	OS160GB12N3P-42	1SCA129919R1001

Mechanism at the end of the switch fuse

100	55/55/90	A2, A3, A4 ¹⁾	3	OS100GB03P-42	1SCA128217R1001
100	55/55/90	A2, A3, A4 ¹⁾	3+N	OS100GB03N3P-42	1SCA129907R1001
125	55/75/110	A2, A3, A4 ¹⁾	4	OS125GB03P-42	1SCA128215R1001
125	55/75/110	A2, A3, A4 ¹⁾	3+N	OS125GB03N3P-42	1SCA129912R1001
160	75/90/132	A2, A3, A4 ¹⁾	3	OS160GB03P-42	1SCA128213R1001
160	75/90/132	A2, A3, A4 ¹⁾	3+N	OS160GB03N3P-42	1SCA129916R1001
200	-	A2, A3, A4 ¹⁾	3	OS200GB03P-42	1SCA128211R1001
200	-	A2, A3, A4 ¹⁾	3+N	OS200GB03N3P-42	1SCA129922R1001

¹⁾ Max. fuse diameter 32 mm

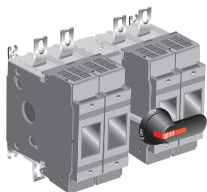
Shafts and handles

Suitable for switches	Included shaft	Included handle	Included terminal bolts
OS100...125GB_P-42	OXF6X161	OHB65J6	M8x25

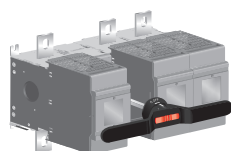
Switch fuses OS200...1250 BS -type

Front operated switch fuses - Mechanism between the poles

Including terminal bolt kit, a black ON-OFF plastic handle and shaft as standard. The handle is IP65 protected, padlockable in the OFF-position and with door interlock in the ON-position. The shaft is adjustable for a range of installation depths.



OS250B22N2P



OS1250B12P

Rated current AC-20...23≤ 690V [A]	Rated Power AC-23 400/500/690V [kW]	Fuse Size	No. of poles	Part Number	Product Hierarchy 2100002 Order Code
200	110/132/200	A1-A3	3	OS200B12P	1SCA022709R9330
			4	OS200B22N2P	1SCA022709R9410
250	140/170/250	B1-B3	3	OS250B12P	1SCA022750R6660
			4	OS250B22N2P	1SCA022750R7800
315	160/220/220	B1-B4	3	OS315B12P	1SCA022719R0680
			4	OS315B22N2P	1SCA022719R2710
400	220/280/400	B1-B4	3	OS400B12P	1SCA022719R0840
			4	OS400B22N2P	1SCA022719R2890
630	355/450/630	C1-C2	3	OS630B12P	1SCA022825R5850
			4	OS630B22N2P	1SCA022825R6230
800	450/560/710	C1-C2	3	OS800B12P	1SCA022825R7550
			4	OS800B22N2P	1SCA022825R8010
1250 ¹⁾ 1000 ²⁾	560/710/1000	D1	3	OS1250B12P	1SCA105250R1001
			4	OS1250B22N2P	1SCA105469R1001

Shafts, handles & bolt kits included as standard

Suitable for switches	Included shaft	Included handle	Included terminal bolts
OS20...32FB (OS Mini)	XP6X150	OH65J6	-
OS32...63G_P	XP6X161	OH45J6	-
OS100...160G_P	XP6X161	OH65J6	M8x25
OS200_P	XP6X210	OH65J6	M8x25
OS250_P	XP6X210	OH65J6	M10x30
OS315...400_P	XP12X250	OH95J12	M10x30
OS630...800_P	XP12X280	OH145J12	M12x40
OS1250_P	XP12X395	OH200J12	M12x50

OS20...160

N1 = Non-fused switched neutral on left side
N2 = Non-fused switched neutral on the right side

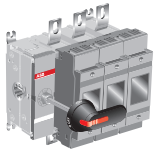
- ¹⁾ AC-20...22
²⁾ AC-23
³⁾ Include a detachable neutral link integrated into the mechanism

OS200...1250

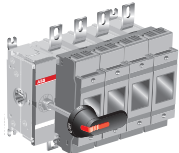
N1 = Non-fused switched neutral on left side
N2 = Non-fused switched neutral on the right side

- ¹⁾ AC-20...22
²⁾ AC-23
³⁾ Include a detachable neutral link integrated into the mechanism

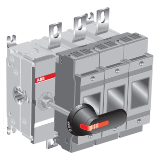
Switch fuses OS200...1250 BS -type



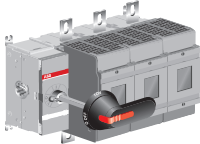
OS200B03P



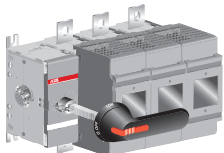
OS200B04P



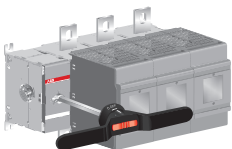
OS250B03P



OS400B03P



OS800B03P



OS1250B03P

Front operated switch fuses - Mechanism at the end of the switch

Including terminal bolt kit, a black ON-OFF plastic handle and shaft as standard. The handle is IP65 protected, padlockable in the OFF-position and with door interlock in the ON-position. The shaft is adjustable for a range of installation depths.

Rated current AC-20...23 ≤ 690V	Rated Power AC-23 400/500/690V [kW]	Fuse Size	No. of poles	Part Number	Product Hierarchy 210002 Order Code
			3	OS200B03P	1SCA022709R9330
			4	OS200B04N2P	1SCA022709R9410
			3	OS250B03P	1SCA022750R6660
			4	OS250B04N2P	1SCA022750R7800
			3	OS315B03P	1SCA022719R0680
			4	OS315B04N2P	1SCA022719R2710
			3	OS400B03P	1SCA022719R0840
			4	OS400B04N2P	1SCA022719R2890
			3	OS630B03P	1SCA022825R5850
			4	OS630B04N2P	1SCA022825R6230
			3	OS800B03P	1SCA022825R7550
			4	OS800B04N2P	1SCA022825R8010
			3	OS1250B03P	1SCA105250R1001
			4	OS1250B04N2P	1SCA105469R1001

N2 = Non-fused switched neutral on the right side
N3 = Include a detachable neutral link integrated into the mechanism

¹⁾ Max. fuse diameter 32 mm
²⁾ AC-23
³⁾ Include a detachable neutral link integrated into the mechanism

Shafts and handles included as standard

Suitable for switches	Included shaft	Included handle	Incl. terminal bolts
OS630...800_P	OXF12X280	OHB145J12	M12X40
OS1250_P	OXF12X395	OHB274J12	M12X50

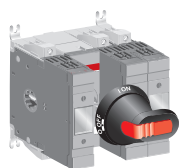
Switch fuses OS40 ...160 DIN -type

Front operated switch fuses

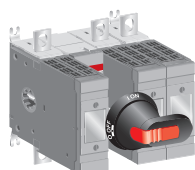
Including terminal bolt kit in OS125G...160G, a black ON-OFF plastic handle and shaft as standard. The handle is IP65 protected, padlockable in the OFF-position and with door interlock in the ON-position. The shaft is adjustable for a range of installation depths.



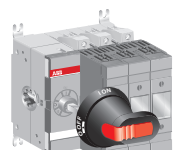
OS40FD12000 (OS Mini)



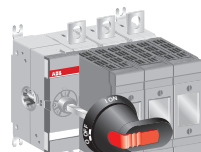
OS32G...63GD12P



OS125G...160GD12P



OS32G...63GD03P



OS125G...160GD03P

Rated current AC-20...23 ≤ 690V [A]	Rated Power AC-23 400/500/690V [kW]	Fuse Size	No. of poles	Part Number	Product Hierarchy 210001 Order Code
---	--	-----------	--------------	-------------	--

Mechanism between the poles Protected tunnel terminals, IP20

40	18.5/22/30	000	3	OS40FD12000	1SCA108914R1001
			4	OS40FD22000N1	1SCA108938R1001
32	15/18.5/22	000	3	OS32GD12P	1SCA114581R1001
			4	OS32GD22N2P	1SCA115202R1001
			4	OS32GD22FP	1SCA115205R1001
63	30/37/55	000	3	OS63GD12P	1SCA115227R1001
			4	OS63GD22N2P	1SCA115230R1001
			4	OS63GD22FP	1SCA115232R1001

Terminal bolt kit

125	55/75/110	000, 00	3	OS125GD12P	1SCA115641R1001
			4	OS125GD22N2P	1SCA115880R1001
			4	OS125GD22FP	1SCA116732R1001
160	75/90/132	000, 00	3	OS160GD12P	1SCA115643R1001
			4	OS160GD22N2P	1SCA115884R1001
			4	OS160GD22FP	1SCA116855R1001

Mechanism at the end of the switch, Protected tunnel terminals, IP20

32	15/18.5/22	000	3	OS32GD03P	1SCA115189R1001
			4	OS32GD04N2P	1SCA115193R1001
			4	OS32GD04FP	1SCA115196R1001
63	30/37/55	000	3	OS63GD03P	1SCA115207R1001
			4	OS63GD04N2P	1SCA115209R1001
			4	OS63GD04FP	1SCA115228R1001

Terminal Bolt Kit

125	55/75/110	000, 00	3	OS125GD03P	1SCA115639R1001
			4	OS125GD04N2P	1SCA115877R1001
			4	OS125GD04FP	1SCA115686R1001
160	75/90/132	000, 00	3	OS160GD03P	1SCA115399R1001
			4	OS160GD04N2P	1SCA115882R1001
			4	OS160GD04FP	1SCA115402R1001

Shafts, handles included as standard

Suitable for switches	Included shaft	Included handle	Included terminal bolts
OS40	XP6X150	OHB65J6	-
OS32...63G	XP6X161	OHB45J6	-
OS125...160G	XP6X161	OHB65J6	M8x25

F = Fused switched neutral

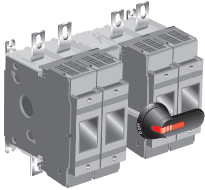
N1 = Non-fused switched neutral on the left side

N2 = Non-fused switched neutral on the right side

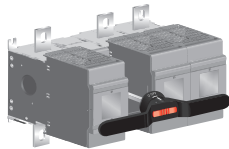
Switch fuses OS200 ...1250 DIN -type

Front operated switch fuses - Mechanism between the poles

Including terminal bolt kit, a black ON-OFF plastic handle and shaft as standard. The handle is IP65 protected, padlockable in the OFF-position and with door interlock in the ON-position. The shaft is adjustable for a range of installation depths. OS1250DA: a fuse replacement tool is integrated in the fuse cover.



OS250D22N2P



OS1250D12P

Rated current AC-20...23 ≤ 690V [A]	Rated Power AC-23 400/500/690V [kW]	Fuse Size	No. of poles	Part Number	Product Hierarchy 210000 Order Code
Protected tunnel terminals, IP20					
200	110/132/200	00	3	OS200DZ12P	1SCA022820R9150
			2	OS200D11P	1SCA022759R9650
200	110/132/200	0	3	OS200D12P	1SCA022721R3050
			4	OS200D22N2P	1SCA022721R3130
			2	OS250D11P	1SCA022752R8710
250	145/170/250	0-1	3	OS250D12P	1SCA022726R8380
			4	OS250D22N2P	1SCA022726R8460
			2	OS400D11P	1SCA110207R1001
400	230/280/400	0-2	3	OS400D12P	1SCA022753R3800
			4	OS400D22N2P	1SCA022753R1770
			2	OS630D11P	1SCA116381R1001
630	355/450/630	3	3	OS630D12P	1SCA022825R3810
			4	OS630D22N2P	1SCA022825R4450
			2	OS800D11P	1SCA116655R1001
800	450/560/710	3	3	OS800D12P	1SCA022825R5340
			4	OS800D22N2P	1SCA022825R5510
			3	OS1250D11P	1SCA105246R1001
1250 ¹⁾ 1000 ²⁾	560/710/1000	4	4	OS1250D12P	1SCA107933R1001
			3	OS1250DA11P	1SCA105241R1001
		4a	3	OS1250DA11P	1SCA105241R1001
			4	OS1250DA12P	1SCA107935R1001

Shafts, handles included as standard

Suitable for switches	Included shaft	Included handle	Included terminal bolts
OS200_P	OXF6X210	OHB65J6	M8x25
OS250_P	OXF6X210	OHB45J6	M10x30
OS400_P	OXF12X250	OHB95J12	M10x30
OS630...800_P	OXF12X280	OHB145J12	M12x40
OS1250_P	OXF12X395	OHB200J12	M12x50

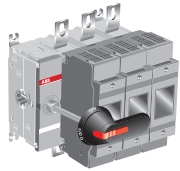
F = Fused switched neutral
N2 = Non-fused switched neutral on the right side
N3 = Include a detachable neutral link integrated into the mechanism

¹⁾ AC-20...22
²⁾ AC-23
³⁾ Max. fuse diameter 32 mm

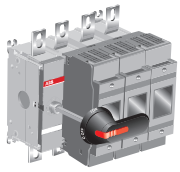
Switch fuses OS200 ...1250 DIN -type

Front operated switch fuses - Mechanism at the end of the switch

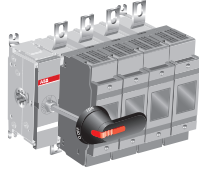
Including terminal bolt kit, a black ON-OFF plastic handle and shaft as standard. The handle is IP65 protected, padlockable in the OFF-position and with door interlock in the ON-position. The shaft is adjustable for a range of installation depths. OS1250DA: a fuse replacement tool is integrated in the fuse cover.



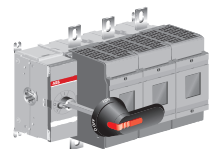
OS200D03P



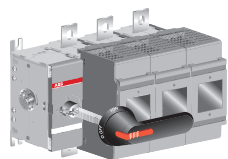
OS250D03N3P



OS250D04P



OS400D03P



OS630D03P

Rated current AC-20...23 ≤ 690V [A]	Rated Power AC-23 400/500/690V [kW]	Fuse Size	No. of poles	Part Number	Product Hierarchy 210000 Order Code
---	--	-----------	--------------	-------------	--

Protected tunnel terminals, IP20

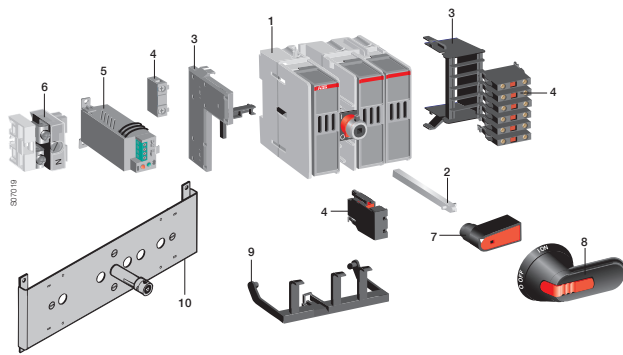
200	110/132/200	00	3	OS200DZ03P	1SCA022797R3440
			4	OS200DZ04N2P	1SCA022820R9230
200	110/132/200	0	2	OS200D02P	1SCA022759R9220
			3	OS200D03P	1SCA022709R9500
			3+N	OS200D03N3P	1SCA022749R8710
			4	OS200D04N2P	1SCA022709R9680
			4	OS200D04FP	1SCA022725R4750
250	145/170/250	0-1	2	OS250D02P	1SCA022760R0170
			3	OS250D03P	1SCA022719R0090
			3+N	OS250D03N3P	1SCA022749R9430
			4	OS250D04N2P	1SCA022719R2380
			4	OS250D04FP	1SCA022726R8620
400	230/280/400	0-2	2	OS400D02P	1SCA022811R2740
			3	OS400D03P	1SCA022719R0250
			3+N	OS400D03N3P	1SCA022753R9320
			4	OS400D04N2P	1SCA022719R2460
			4	OS400D04FP	1SCA022753R7110
630	355/450/630	3	2	OS630D02P	1SCA107745R1001
			3	OS630D03P	1SCA022825R2830
			3+N	OS630D03N3P	1SCA100858R1001
			4	OS630D04N2P	1SCA022825R4290
			4	OS630D04FP	1SCA022825R4610
800	450/560/710	3	2	OS800D02P	1SCA022837R2650
			3	OS800D03P	1SCA022825R4880
			3+N	OS800D03N3P	1SCA100859R1001
			4	OS800D04N2P	1SCA022825R5180
			4	OS800D04FP	1SCA022825R5000
1250 ¹⁾ 1000 ²⁾	560/710/1000	4	2	OS1250D02P	1SCA114051R1001
			3	OS1250D03P	1SCA105475R1001
			3+N	OS1250D03N3P	1SCA107932R1001
			4	OS1250D04N2P	1SCA105248R1001
			4	OS1250D04FP	1SCA105473R1001
1250 ¹⁾ 1000 ³⁾	560/710/1000	4a	2	OS1250DA02P	1SCA114059R1001
			3	OS1250DA03P	1SCA105238R1001
			3+N	OS1250DA03N3P	1SCA107934R1001
			4	OS1250DA04N2P	1SCA105243R1001
			4	OS1250DA04FP	1SCA105240R1001

F = Fused switched neutral
 N2 = Non-fused switched neutral on the right side
 N3 = Include a detachable neutral link integrated into the mechanism

¹⁾ AC-20...22
²⁾ AC-23
³⁾ Max. fuse diameter 32 mm

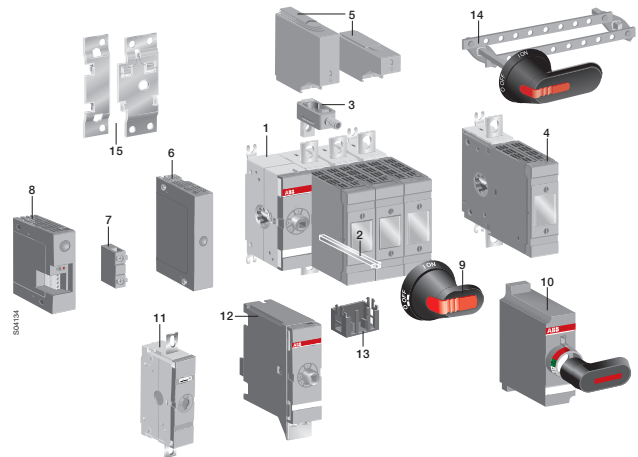
Accessories Overview

OS16...OS40 (OS Mini)



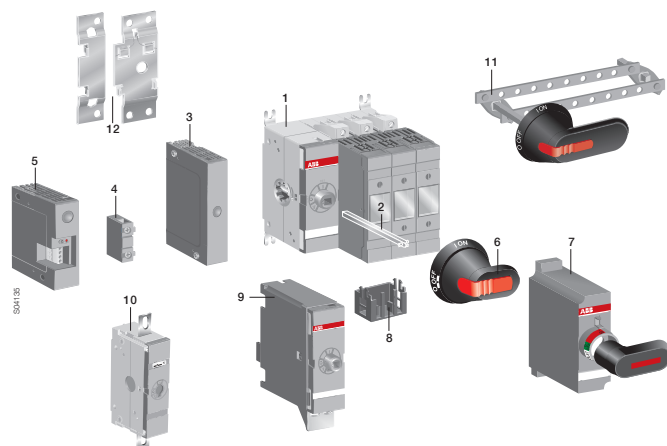
- 1 Switch fuse | 2 Extended shaft | 3 Mounting frame for auxiliary contact | 4 Auxiliary contact
5 Fuse monitor | 6 Detachable neutral link | 7 Handle knob | 8 Pistol type handle
9 Blown fuse indicator | 10 Conversion kit: 6/8-pole, C/O, mech. interlock

OS100G...OS1250_



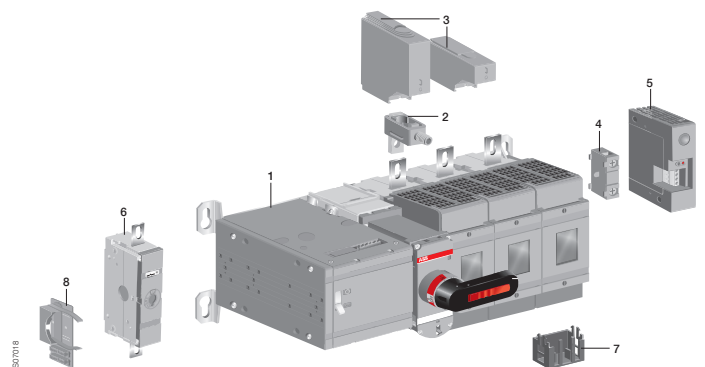
- 1 Switch fuse | 2 Extended shaft | 3 Terminal clamp | 4 Four pole | 5 Terminal shroud
6 Module for auxiliary contacts | 7 Auxiliary contact | 8 Fuse monitor | 9 Pistol type handle
10 Direct mounted handle | 11 Detachable neutral link | 12 Interlocks, mechanical & electrical
13 Blown fuse indicator | 14 Conversion kit: 6/8-pole, C/O, bypass, mech. interlock
15 DIN rail mounting kit (only for OS100G...160G_)

OS32G...OS63G



- 1 Switch fuse | 2 Extended shaft | 3 Module for auxiliary contacts | 4 Auxiliary contact
5 Fuse monitor | 6 Pistol type handle | 7 Direct mounted handle | 8 Blown fuse indicator
9 Interlocks, mechanical & electrical | 10 Detachable neutral link
11 Conversion kit: 6/8-pole, C/O, bypass, mech. interlock | 12 DIN rail mounting kit

OSM32G...OSM1250



- 1 Motor operator | 2 Terminal clamp | 3 Terminal shroud | 4 Auxiliary contact | 5 Fuse monitor
6 Detachable neutral link | 7 Blown fuse indicator | 8 Storage for handle and fuses

Switch fuses accessories

Operating handles

Optional handles for front operated switch fuses

Plastic pistol type handles, IP 65, Nema type 1, 3R, 12

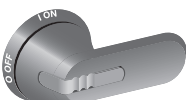
Padlockable with 3 padlocks in the OFF-position, door interlock in the ON-position. Units/type = 1 pcs. Screw fixing from the back side of the handle, no screws on the front, ensures double insulation.



OHB65J6



OHY65J6



OHG65J6



OHB_

Colour	Handle length [mm]	Part Number	Product Hierarchy 2200003 Order Code
--------	--------------------	-------------	--------------------------------------

For shaft diameter 6 mm (for OSMini and OS32...250) Black and red-yellow: I-O/ON-OFF, grey: I-O.

Black	45	OHB45J6	1SCA022380R8770
Red-yellow	45	OHY45J6	1SCA022380R8930
Grey	45	OHG45J6	1SCA022380R8850
Black	65	OHB65J6	1SCA022380R9660
Red-yellow	65	OHY65J6	1SCA022380R9820
Grey	65	OHG65J6	1SCA022380R9740
Black	80	OHB80J6	1SCA022381R0240

Black and red-yellow: Test/I-O/ON-OFF, grey: Test/I-O.

Black	45	OHB45J6T	1SCA109870R1001
Black	65	OHB65J6T	1SCA022399R8110
Red-yellow	65	OHY65J6T	1SCA022456R9540
Grey	65	OHG65J6T	1SCA022456R9620
Black	80	OHB80J6T	1SCA022399R8290

For shaft diameter 12 mm (for OS315...400) Black and red-yellow: I-O/ON-OFF, grey: I-O.

Black	95	OHB95J12	1SCA022381R0830
Red-yellow	95	OHY95J12	1SCA022381R1050
Grey	95	OHG95J12	1SCA022381R0910

Indication: Test-OFF-ON/Test-O-I

Black	95	OHB95J12T	1SCA022736R1750
Red-yellow	95	OHY95J12T	1SCA022736R1910

For shaft diameter 12 mm (for OS630...800) Black and red-yellow: I-O/ON-OFF, grey: I-O.

Black	125	OHB125J12	1SCA022381R1560
Red-yellow	125	OHY125J12	1SCA022381R1720
Grey	125	OHG125J12	1SCA022381R1640
Black	145	OHB145J12	1SCA022381R2110
Red-yellow	145	OHY145J12	1SCA022381R2370
Grey	145	OHG145J12	1SCA022381R2290
Black	175	OHB175J12	1SCA022381R2450
Red-yellow	175	OHY175J12	1SCA022381R2700
Grey	175	OHG175J12	1SCA022381R2610

Indication: Test-OFF-ON/Test-O-I

Black	125	OHB125J12T	1SCA022652R2220
Red-yellow	125	OHY125J12T	1SCA022652R2310
Black	145	OHB145J12T	1SCA022652R2570
Red-yellow	145	OHY145J12T	1SCA022652R2650
Black	175	OHB175J12T	1SCA022708R0740

- Door interlocking in the ON-position means that the door cannot be opened, when the handle is in the ON-position. This can be defeated to allow authorized personnel access for inspection.
- Handles padlockable in all positions are available on request.

Switch fuses accessories

Operating handles



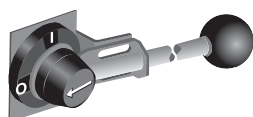
OHB274/330J12



OHB_P



OHM_



YASDA_

Optional handles for front operated switch fuses

Plastic pistol type handles, IP 65, Nema type 1, 3R, 12

Padlockable with 3 padlocks in the OFF-position, door interlock in the ON-position. Units/type = 1 pcs. Screw fixing from the back side of the handle, no screws on the front, ensures double insulation.

Colour	Handle length [mm]	Part Number	Product Hierarchy 2200003 Order Code
--------	--------------------	-------------	--------------------------------------

For shaft diameter 12 mm (for OS1200...1250)

Black and red-yellow: I-0/ON-OFF.

Black	274	OHB274J12	1SCA115920R1001
Red-yellow	274	OHY274J12	1SCA115919R1001
Black	330	OHB330J12	1SCA115922R1001
Red-yellow	330	OHY330J12	1SCA115921R1001
Black	2x150	OHB150J12P	1SCA022865R9430
Red-yellow	2x150	OHY150J12P	1SCA101586R1001
Black	2x200	OHB200J12P	1SCA022865R9510
Red-yellow	2x200	OHY200J12P	1SCA101587R1001

Indication: Test-OFF-ON/Test-O-I

Black	274	OHB274J12T	1SCA120250R1001
Black	330	OHB330J12T	1SCA120252R1001
Black	2x200	OHB200J12PT	1SCA106510R1001
Red-yellow	2x200	OHY200J12PT	1SCA111512R1001

- Door interlocking in the ON-position means that the door cannot be opened, when the handle is in the ON-position. This can be defeated to allow authorized personnel access for inspection.
- Handles padlockable in all positions are available on request.

Stainless steel pistol type handles, IP66, NEMA 4X

Padlockable with 3 padlocks in the OFF-position, door interlock in the ON-position, indication: I-0/ON-OFF

For shaft diameter 6 mm (for OSMini and OS32...250)

Metallic	65	OHM65L6	1SCA022739R1070
----------	----	---------	-----------------

For shaft diameter 12 mm

Metallic	125	OHM125L12	1SCA022739R1150
Metallic	175	OHM175L12	1SCA022739R1230
Metallic	275	OHM275L12	1SCA022832R4840

Metallic pistol type handles

Padlockable with 3 padlocks in OFF-position, door interlock in the ON-position.

For shaft diameter 12 mm

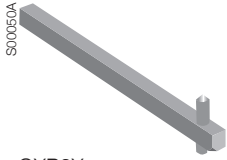
Black I-0	220	YASDA 7	1SCA022071R3010
Black ON-OFF	220	YASDA 8	1SCA022071R3270
Black I-0	320	YASDA35	1SCA104400R1001

Switch fuses accessories

Extended shafts

Extended shafts

Shaft (mm)	Front operated ¹⁾ H / mm	Side operated ²⁾ H / mm	Part number	Product Hierarchy 2100004 Order Code
------------	--	---------------------------------------	-------------	---



OSP6X_



OSP_X_-45

For OS 16...35 (Mini)²⁾, shaft diameter 6 mm

150	135...210	154...166	OSP6X150 ³⁾	1SCA022295R5600
170	155...230	174...186	OSP6X170	1SCA108224R1001
265	250...325	269...281	OSP6X265	1SCA108225R1001
400	385...460	404...416	OSP6X400	1SCA108226R1001
150	135...210	154...166	OSP6X150-45 ¹⁾	1SCA022294R4400
170	155...230	174...186	OSP6X170-45 ¹⁾	1SCA108227R1001
265	380...460	269...281	OSP6X265-45 ¹⁾	1SCA108228R1001
400	380...460	404...416	OSP6X400-45 ¹⁾	1SCA108229R1001

For OS 40 (Mini)²⁾, shaft diameter 6 mm

150	135...210	235...243	OSP6X150 ³⁾	1SCA022295R5600
170	155...230	255...363	OSP6X170	1SCA108224R1001
265	250...325	352...360	OSP6X265	1SCA108225R1001
400	385...460	487...495	OSP6X400	1SCA108226R1001
150	135...210	235...243	OSP6X150-45 ¹⁾	1SCA022294R4400
170	155...230	255...363	OSP6X170-45 ¹⁾	1SCA108227R1001
265	250...325	352...360	OSP6X265-45 ¹⁾	1SCA108228R1001
400	385...460	487...495	OSP6X400-45 ¹⁾	1SCA108229R1001

For OS 32G...63G⁴⁾, shaft diameter 6 mm

63		161...167	OSP6X63	1SCA111010R1001
90		223...229	OSP6X90	1SCA022064R1180
130	137...174 ⁷⁾	263...263	OSP6X130	1SCA022057R0570
161	138...205		OSP6X161 ³⁾	1SCA022067R1760
210	187...254		OSP6X210	1SCA022295R6080
290	267...334		OSP6X290	1SCA022042R6370
360	337...404		OSP6X360	1SCA022042R6530
430	407...474		OSP6X430	1SCA022056R6030
210	187...254		OSP6X210-45 ¹⁾	1SCA022294R4230
290	267...334		OSP6X290-45 ¹⁾	1SCA022304R4290
360	337...404		OSP6X360-45 ¹⁾	1SCA022341R4640

For OS 200...250 DIN-type, shaft diameter 6 mm

161	160...205		OSP6X161	1SCA022067R1760
210	189...254		OSP6X210 ³⁾	1SCA022295R6080
290	269...334		OSP6X290	1SCA022042R6370

For OS 200...250 BS-type, shaft diameter 6 mm

161	140...205		OSP6X161	1SCA022067R1760
210	189...254		OSP6X161	1SCA022295R6080
290	269...334		OSP6X290	1SCA022042R6370

¹⁾ The shaft position is rotated 45 degrees

²⁾ Side operated, 4-pole: add 36 mm

³⁾ Included as standard in P-types

⁴⁾ Side operated 3-pole OS60GJ: add 33mm, 4-pole types:

OS32...63GD/GB: add 23.5 mm, OS60GJ: add 68mm

⁵⁾ Included as standard in front operated types

⁶⁾ OS32...63GB/GF: 115...174

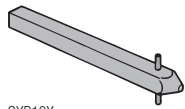
⁷⁾ OS100GJ: 113...174, OS100GB...160GB: 121...174

⁸⁾ Side operated 4-pole types: add 35mm

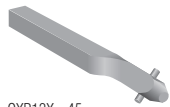
Switch fuses accessories

Extended shafts

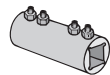
Extended shafts



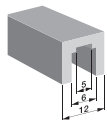
OXP12X_



OXP12X_-45



OETLZX95



OETLZK19

Shaft (mm)	Front operated H / mm		Part Number	Product Hierarchy 2200003 Order Code
------------	--------------------------	--	-------------	---

For OS 315...400, shaft diameter 12 mm

250	230...325		OXP12X250 ²⁾	1SCA022325R6980
280	260...355		OXP12X280	1SCA022137R5140
325	305...400		OXP12X325	1SCA022042R5810
395	375...470		OXP12X395	1SCA022042R5990
465	445...540		OXP12X465	1SCA022042R6020
535	515...610		OXP12X535	1SCA022042R6110

For OS 630...800, shaft diameter 12 mm

280	258...382		OXP12X280 ²⁾	1SCA022137R5140
325	303...427		OXP12X325	1SCA022042R5810
395	373...497		OXP12X395	1SCA022042R5990
465	443...567		OXP12X465	1SCA022042R6020
535	513...637		OXP12X535	1SCA022042R6110
280	258...382		OXP12X280-45 ¹⁾	1SCA022382R0800
325	303...427		OXP12X325-45 ¹⁾	1SCA022304R4450

For OS 1200...1250, shaft diameter 12 mm

395	371...500		OXP12X395	1SCA022042R5990
465	441...570		OXP12X465	1SCA022042R6020
535	511...640		OXP12X535	1SCA022042R6110

Shaft extension socket - for extending the shaft of combination attachment.

12 diameter		OETLZX95	1SCA022083R5620
-------------	--	----------	-----------------

Adapters for extension socket - adapters to place inside of OETLZX 95 to connect shafts of different sizes.

6/6, 6/12		OETLZK19	1SCA022083R5620
-----------	--	----------	-----------------

Switch fuses accessories

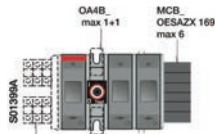
Auxiliary contacts

Auxiliary contacts

OS Mini

Part Number

Product Hierarchy 2100004
Order Code



OA1G_ OA3G_ + OSZ4
max 3+3
OS Mini



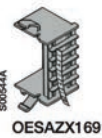
OA_G



MCB_



OSZ4



OESAZX169

Auxiliary contacts for OS Mini. Mounting to the switch mechanism, auxiliary/test contacts. Max. two change over contacts. Change-over contacts

	<table border="1"> <tr> <th>Handle position</th> <th>Main contacts</th> <th>Aux. / Test contacts N.O.</th> </tr> <tr> <td>Test</td> <td>open</td> <td>closed</td> </tr> <tr> <td>0</td> <td>open</td> <td>open</td> </tr> <tr> <td>I</td> <td>closed</td> <td>closed</td> </tr> </table>	Handle position	Main contacts	Aux. / Test contacts N.O.	Test	open	closed	0	open	open	I	closed	closed	OA4B1C	1SCA022193R0150
Handle position	Main contacts	Aux. / Test contacts N.O.													
Test	open	closed													
0	open	open													
I	closed	closed													

Single pole contacts > 3mm contact gap

1NO		OA4B10	1SCA022276R9050
1NC		OA4B01	1SCA022276R9210

Mounting on the side of the switch with aux. frame OESAZX169

1NO		MCB-10	1SCA022150R5110
1NC		MCB-01	1SCA022150R5370

Snap-on mounting on the switch, by using a frame OSZ4. IP20.
NO contacts are provided with a positive opening feature. Units/type = 1 piece. Types _AU have gold plated contacts for harsh environments and low operating voltages.

1NO		OA1G10	1SCA022353R4970
1NC		OA3G01	1SCA022456R7410
1NO		OA1G10AU	1SCA022436R7910
1NC		OA3G01AU	1SCA022819R5260

Mounting frames for auxiliary contacts of OS Mini

Frame for auxiliary contacts OA1G10 & OA3F01 & for fuse monitor. Max. 6 auxiliary contacts can be fitted.

Mounting on the left side of the switch	OSZ4	1SCA022530R0200
---	------	-----------------

Frame for MCB_ auxiliary contacts. Not suitable for side operated switches. Max. 6 auxiliary contacts can be fitted.

Mounting on the right side of the switch	OESAZX169	1SCA022196R9360
--	-----------	-----------------

Auxiliary contacts for OS32G ... 1250

The "test" contacts operate in ON- and OFF-positions as well as when the handle is turned to TEST position = 45 degrees over the OFF-position. The "test indication" contacts operate only when the handle is turned to TEST-position. See the function table below. The OA1G10 (N.O.) or OA3G01 (N.C.) auxiliary contact blocks can be used as standard auxiliary contacts, "test" or "test indication" contacts. The desired functions are achieved when an auxiliary contact block is installed in a specific place shown in the mounting instruction. In order to activate the "test" and "test indication" features a handle with test function is required.

Function table of OS32G...1250 auxiliary contacts

Handle position	Main contacts	Aux./Test contacts N.O.	Test indication contacts N.O.
Test	open	closed	closed
0	open	open	open
I	closed	closed	open

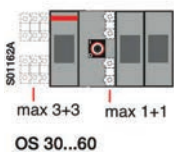
Maximum number of contact blocks, "Aux./test" contacts and "test indication" contacts, see the table below. Standard versions include all except for N3-types which are equipped with integrated neutral through the mechanism.

Maximum number of auxiliary contacts under the mechanism cover

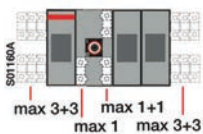
Pole version	Standard	N3	Standard	N3	Standard	N3
Maximum number of contact blocks	4	0	8	4	12	8
Aux./Test contacts	4	0	4	2	8 ¹⁾	6 ²⁾
Test indication contacts	2	0	4	2	4	2

Auxiliary contacts for OS32G ... 1250

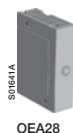
Mounting on the left side of the switch: Max. 8 auxiliary contact blocks with the OEA28 module. Mounting under the mechanism cover: OS200...250: Max 4 test contacts or 2 test contacts + 2 test indication contacts. - OS315...400: Max 4 test contacts and 4 test indication contacts. The test contacts can be used as standard auxiliary contacts as well. Auxiliary contacts for 3 + N types only with the OEA28 module.



max 3+3 max 1+1
OS 30...60



max 3+3 max 1+1 max 3+3
max 1 max 3+3
OS 100...200



OEA28

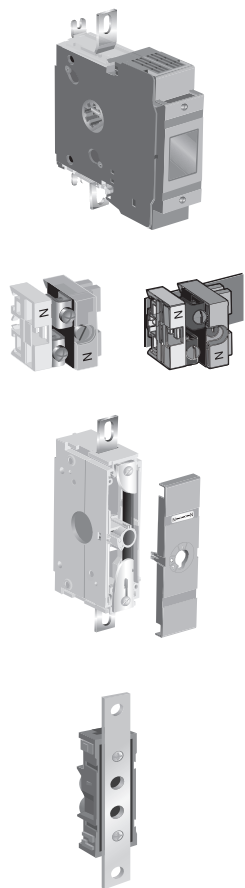


OA_G

Module for auxiliary contacts screw mounting to the left side of the switch	OEA28	1SCA022714R8810
1 NO contact block	OA1G10	1SCA022353R4970
1 NC contact block	OA3G01	1SCA022456R7410

Switch fuses accessories

4th poles

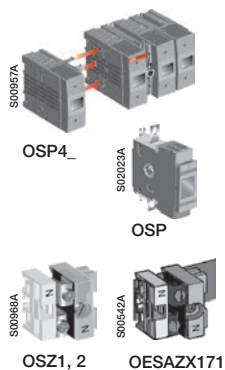


4th poles

Suitable for switches	Mounting side	Part Number	Product Hierarchy 2200003 Order Code	
Fusable 4 poles				
OS100GB ... 160GB	Left/right	OSP160GB	1SCA114769R1001	
OS125GD ... 160GD		OSP160GD	1SCA114768R1001	
OS200B		OSP200B	1SCA022735R9180	
OS200D		OSP200D	1SCA022735R8960	
OS250B		OSP250B	1SCA022770R4030	
OS250D		OSP250D	1SCA022735R9340	
OS315B ... 400B		OSP400B	1SCA022770R3140	
OS400D		OSP400D	1SCA022770R3220	
OS630 ... 800D		OSP800B	1SCA100433R1001	
OS630 ... 800B		OSP800D	1SCA100434R1001	
OS1250D		OSP1250D	1SCA107946R1001	
OS1250DA		OSP1250DA	1SCA112402R1001	
OS1250B		OSP1250DB	1SCA107950R1001	
Switched 4 poles				
OS100G ... 160G		Left/right	OSP160GN	1SCA114770R1001
OS200_	OSP200N		1SCA022735R8700	
OS250_	OSP250N		1SCA022735R9260	
OS400_	OSP400N		1SCA022770R3490	
OS630 ... 800	OSP800N		1SCA100432R1001	
OS1200 ... 1250	OSP1250N		1SCA107943R1001	
For OS 200...250 DIN-type, shaft diameter 6 mm				
161	160 ... 205			
210	189 ... 254			
290	269 ... 334			
For OS 200...250 BS-type, shaft diameter 6 mm				
161	140 ... 205			
210	189 ... 254			
290	269 ... 334			

Switch fuses accessories

Neutral links

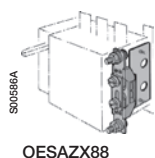


Neutral links

Max. wire	H/W/D [mm]	Mounting holes	Part Number	Product Hierarchy 2100004 Order Code
For OS Mini Detachable, mounting on the side of the switch, on the mounting plate or DIN-rail.				
16mm ² Cu	39/41/40	∅ 4.2, distance 32	OESAZX171	1SCA022197R2580
For OS/OSM 32G ... 160G Detachable, mounting onto the base plate or DIN-rail.				
16mm ² Cu	39/41/40	∅ 4.2, distance 32	OSZ1	1SCA022481R3710
35mm ² Cu	39/44/45	∅ 4.2, distance 365	OSZ2	1SCA022481R3800
For OS/OSM 100G ... 1250 Mounting with screws (included) onto either side of the switch (OXN250 to OS200...250) or on the base plate (OXN250 to OS1250)				
OS/OSM32G ... 250			OXN250	1SCA022752R9950
OS/OSM315G ... 400			OXN400	1SCA022770R3060
OS/OSM630G ... 800			OXN800S	1SCA022831R4880
OS/OSM1250			OXN1250S	1SCA104163R1001

Mounting separately to the base plate

Ith [A]	Terminal size (WxD) [mm]; bolt size	Part Number	Product Hierarchy 2100004 Order Code
250	12x3 M6	OESAZX162	1SCA022193R0400
315	20x3 M8	OESAZX164	1SCA022202R9520
400	25x4 M10	OESAZX165	1SCA022202R9790
1000	40x5 M12	OESAZX160	1SCA022186R3960



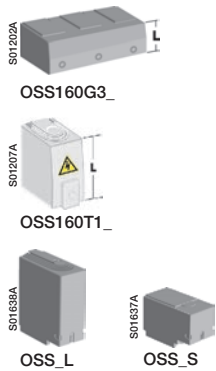
Solid links

Suitable for

OS20FB...OS32FB_A1	OESAZG98	1SCA022354R9650
OS32GD...OS160GD	OFAW000	1SCA022003R9680
OS32FB...A2...OS63GB	OESAZG5	1SCA022057R1380
OS100GB...OS160GB	OESAZS36	1SCA022044R4600
OS100GJ	OESAZS175	1SCA022354R9570
OS200...250B,J	OEZL1	1SCA022723R7400
OS315...400B,J	OESAZK98	1SCA022067R7370
OS630B...800B	OESAZL79	1SCA022067R7110
OS600J, 800...1200L	OEZNL8	1SCA113998R1001
OS1250B	OEZNL810	1SCA116437R1001
OS250D	OFAW1	1SCA022003R9760
OS400D	OFAW2	1SCA022003R9840
OS630/800D	OFAW3	1SCA022003R9920

Switch fuses accessories

Terminal shrouds



Terminal shrouds

Suitable Switch	Pieces	Handle Type	Part Number	Product Hierarchy 2100004 Order Code
OS 100G ... 160G	3	Long type	OSS160G1L/3	1SCA114764R1001
		Short type	OSS160G1S/3	1SCA114766R1001
	4	Long type	OSS160G1L/4	1SCA114765R1001
		Short type	OSS160G1S/4	1SCA114767R1001
OS/OSM 200	3	Long type	OSS200G1L/3	1SCA022731R8910
		Short type	OSS200G1S/3	1SCA022732R0130
	4	Long type	OSS200G1L/4	1SCA022731R9040
		Short type	OSS200G1S/4	1SCA022732R0050
OS/OSM 250	3	Long type	OSS250G1L/3	1SCA022731R9390
		Short type	OSS250G1S/3	1SCA022731R9550
	4	Long type	OSS250G1L/4	1SCA022731R9470
		Short type	OSS250G1S/4	1SCA022731R9630
OS/OSM 315...400	3	Long type	OSS400G1L/3	1SCA022776R6650
		Short type	OSS400G1S/3	1SCA022776R6900
	4	Long type	OSS400G1L/4	1SCA022776R6730
		Short type	OSS400G1S/4	1SCA022776R7030
OS/OSM 630...800	3	Long type	OSS800G1L/3	1SCA022776R7200
		Short type	OSS800G1S/3	1SCA022776R7540
	4	Long type	OSS800G1L/4	1SCA022776R7380
		Short type	OSS800G1S/4	1SCA022776R7460
OS 1200...1250/ OSM 1250_N3	3	Long type	OSS1250G1L/3	1SCA107938R1001
		Short type	OSS1250G1S/3	1SCA107939R1001
	4	Long type	OSS1250G1L/4	1SCA107940R1001
		Short type	OSS1250G1S/4	1SCA107941R1001

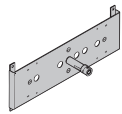
Terminal shrouds suitable for mechanisms with detachable integrated neutral (N3 versions)

OS/OSM 100G...250_N3	1	Long type	OTS250G1L	1SCA022715R5340
		Short type	OTS250G1S	1SCA022715R5260
OS/OSM 315...400_N3		Long type	OSS250G1L	1SCA022727R5080
		Short type	OSS250G1S	1SCA022727R4940
OS/OSM 630...800_N3		Long type	OTS800G1L	1SCA022776R7710
		Short type	OTS800G1S	1SCA022776R8010
OS 1200...1250_N3/ OSM 1250_N3	Long type	OTS1600G1L	1SCA106134R1001	
	Short type	OTS1600G1S	1SCA102667R1001	

Switch fuses accessories

Conversion kits

For front operated combination switches



OW_6DS_



OESAZW2



OETLZW9



OTZW25,
OETLZW11



OETLZW12



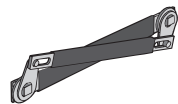
OTZW26



OETLZW13



OTZW10



OETLZW3, 14, 15

Suitable for switches	Remarks	Shaft distance [mm]	Part Number	Product Hierarchy 2100004 Order Code
-----------------------	---------	---------------------	-------------	--------------------------------------

6 and 8-pole switch mechanism. Parallel attachment for connecting 3- and 4-pole switches. The switches work simultaneously.

OS Mini 6 pole	Two 3-pole switches needed		OWP6DS1	1SCA105255R1001
OS Mini 8 pole	Two 4-pole switches needed		OWP6DS2	1SCA105256R1001

The attachment levers are provided with holes, enabling different shaft distances. The combination switches can be mounted either horizontally or vertically.

OS32G-250	Two 3- or 4-pole switches needed	45 + (0-13)x15	OESAZW2	1SCA022078R1600
OS315-400		60 + (0-19)x20	OETLZW9	1SCA022061R3300

Change-over switch mechanism. Two switches connected with a mechanism operating into I-O-II positions.

OS Mini	Two 3-pole switches needed		OWC6DSH1	1SCA105251R1001
	Two 4-pole switches needed		OWC6DSH2	1SCA105252R100
OS32G-250	Two 3- or 4-pole switches needed	210 + (0 - 18)x20	OTZW25	1SCA022778R6920
OS315-400		210 + (0 - 11)x20	OETLZW11	1SCA022078R0030
		210 + (0 - 20)x20	OETLZW12	1SCA022078R0200

By-pass switch mechanism. A combination of two switches in parallel with a third switch for change-over operation to pass- by, for example, a breaker for maintenance. The by-pass attachment can be used together with another combination attachment.

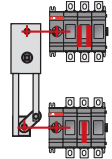
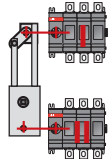
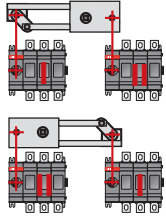
OS32G - 250	Three 3- or 4-pole switches needed	Between 1 and 2: 210 + (0 - 9)x20 Between 1 and 3: 250 + (0 - 9)x20	OTZW26	1SCA022778R7060
OS315-400		Between 1 and 2: 210 + (0 - 18)x20 Between 1 and 3: 250 + (0 - 18)x20	OETLZW13	1SCA022078R0460

Mechanical interlock mechanism. Prevents one switch from closing to ON - position, if the other is not in OFF - position. OTZW/OETLZW-types: When mounted upside down, prevents one switch from opening to OFF-position, if the other is not in the ON-position. (UPS-usage, make-before-break)

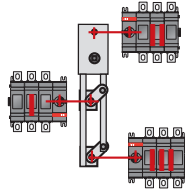
OS Mini	Two 3-pole switches needed		OWM6DS1	1SCA105253R1001
	Two 4-pole switches needed		OWM6DS2	1SCA105254R1001
OS32G-250	Two 3- or 4-pole switches needed	190	OTZW10	1SCA022431R5280
OS315-800		250	OETLZW14	1SCA022077R3410
OS315-800		300	OETLZW3	1SCA022049R0380
OS315-1250		500	OETLZW15	1SCA022081R9340

Switch fuses accessories

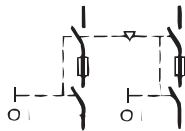
Conversion kits & locks



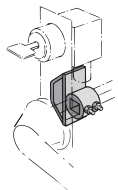
Change-over switches



By-pass switches



Mechanical interlock

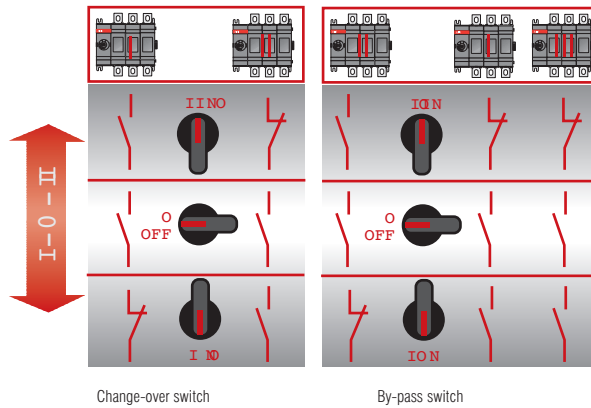


OETLZW5

The shafts and handles for conversion kits

Conversion kit type	To be ordered separately		Included in the conversion kit delivery		The standard handle or shaft of one of the combined switches can be used	
	Shaft	Handle	Shaft	Handle	Shaft	Handle
6 and 8-pole switches						
OWP6DS1	x	-	-	-	-	x
OWP6DS2	x	-	-	-	-	x
OESAZW2	-	-	x (2 pcs)	OHB145J12	-	-
OETLZW9	-	-	-	-	x	x
Change-over switches						
OWC6DSH1	x (length min. 170mm)	-	-	OHB65J6E011	-	-
OWC6DSH2	x (length min. 170mm)	-	-	OHB65J6E011	-	-
OTZW25	-	-	x (2 pcs)	OHB95J12E011	-	-
OETLZW11	-	-	x (2 pcs)	OHB145J12E011	-	-
OETLZW12	-	-	x (2 pcs)	YASDA21	-	-
By-pass switches						
OTZW26	-	-	x (3 pcs)	OHB95J12E011	-	-
OETLZW13	-	-	x (3 pcs)	YASDA 6	-	-
Mechanical interlock						
OWM6DS1	x (2 pcs, length min. 170mm)	x (2 pcs)	-	-	-	-
OWM6DS2	x (2 pcs, length min. 170mm)	x (2 pcs)	-	-	-	-
OTZW10	-	-	-	-	x	x
OETLZW14	-	-	-	-	x	x
OETLZW3	-	-	-	-	x	x
OETLZW15	-	-	-	-	x	x

The functional diagram



Change-over switch

By-pass switch

Cam attachment

Suitable for switches

OS16 ... 250
OS 315 ... 1250

Part Number

OELTZW16
OELTZW5

Product Hierarchy 2300001
Order Code

1SCA022095R2070
1SCA022052R3900

Contact us

ABB Ltd

Tower Court
Foleshill Enterprise Park
Courtaulds Way
Coventry CV6 5NX

Tel: 0333 999 9900

Fax: 0333 999 9901

Email: LV.Enquiries@gb.abb.com

Twitter: @ABBUKLVP

www.abb.co.uk/lowvoltage

Note: We reserve the right to make technical changes or modify the contents of this document without prior notice. With regard to purchase orders, the agreed particulars shall prevail. ABB Ltd does not accept any responsibility whatsoever for potential errors or possible lack of information in this document.

We reserve all rights in this document and in the subject matter and illustrations contained therein. Any reproduction, disclosure to third parties or utilization of its contents – in whole or in parts – is forbidden without prior written consent of ABB Ltd.

Copyright © 2015 ABB Ltd
All rights reserved