



**Description**

A 6 figure, general purpose heavy duty industrial stroke counter designed for high count rates and continuous operation even under the most adverse operating conditions. Corrosion resistant material and finishes. Large, easy-to-read numbers.

**Features**

- Heavy duty
- High count rates
- Corrosion resistant

**Options**

- Non-reset
- Double shaft extensions
- Special mounting bases
- Weatherized versions
- 1022-006S - additional spring
- 1255-004S - additional lever

**Specifications**

**Figures:** 6 figures, white on black, 0.30" [7.6mm] high  
**Reset:** Knob or lock and key  
**Speed:** 1,000 counts/minute  
**Rotation:** Top-coming or top-going  
**Count Stroke:** 40° Min. - 70° Max.

**Shaft Extension:** Right-hand or left-hand  
**Shaft Diameter:** 0.25" [6.4mm]  
**Operating Life:** Beyond 100 million counts  
**Temp. Range:** -15°F to +140°F [-26°C to +60°C]  
**Weight:** 18 oz. [510g]

**Models Description**

1-2916 Left-hand, top-coming, standard reset knob  
 1-2926 Left-hand, top-going, standard reset knob  
 1-2936 Right-hand, top-coming, standard reset knob

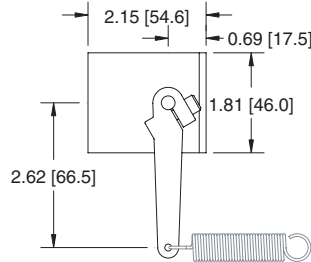
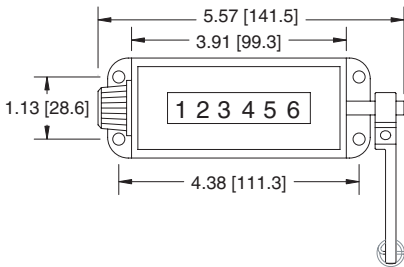
**Models Description**

1-2946 Right-hand, top-going, standard reset knob  
 2-2936 Right-hand, top-coming, lock and key reset  
 V1-2936 Right-hand, top-coming, standard reset knob, V-base

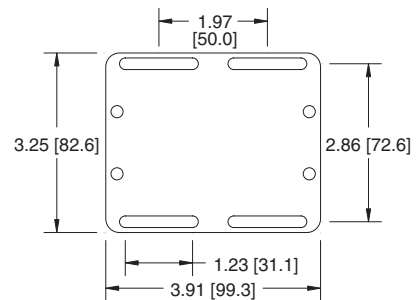
\* Items in bold are normally in factory stock.

**Dimensions**

**Right - Hand Shaft**



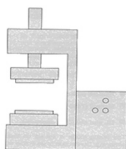
**V - Mount**



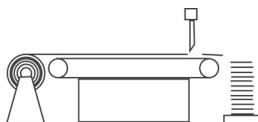
Mounting holes: 0.22" [5.6mm] Dia.

**Applications**

Punch presses



Shears



Cement trucks





Description

A 6 figure, general purpose, industrial rotary counter designed for use on equipment where environmental conditions are far from ideal. Various count ratios make it suitable for winding equipment, measuring devices and direct reading instruments.

Features

- Heavy duty
- High count rates
- Corrosion resistant

Options

- Non-reset
- Subtractive
- Double shaft extensions
- Special mounting bases
- Weatherized versions
- 98WF - Measuring Wheel - 12" circumference

Specifications

**Figures:** 6 figures, white on black, 0.30" [7.6mm] high  
**Reset:** Knob or lock and key  
**Speed:** 2,500 counts/minute or revolutions/minute, whichever is lower  
**Rotation:** Top-coming or top-going, to add. Will not subtract if rotation is reversed

**Shaft Extension:** Right-hand or left-hand  
**Shaft Diameter:** 0.25" [6.4mm]  
**Ratio:** 1 count/revolution or 10 counts/revolution  
**Operating Life:** Beyond 100 million counts  
**Temp. Range:** -15°F to +140°F [-26°C to +60°C]  
**Weight:** 18 oz. [510g]

Models

Description

11-2916 Left-hand, top-coming, 10 counts/revolution  
 11-2936 Right-hand, top-coming, 10 counts/revolution  
 21-2916 Left-hand, top-coming, 1 count/revolution  
 21-2926 Left-hand, top-going, 1 count/revolution

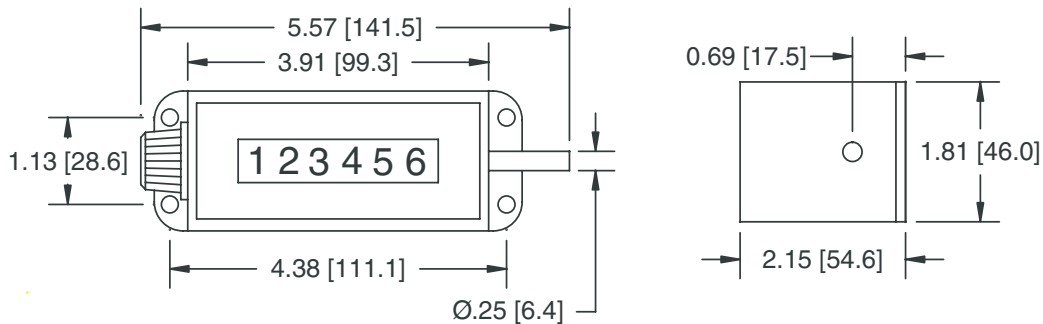
Models

Description

21-2936 Right-hand, top-coming, 1 count/revolution  
 21-2946 Right-hand, top-going, 1 count/revolution  
 22-2936 Right-hand, top-coming, 1 count/revolution, lock & key reset,

Dimensions

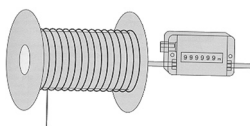
Right - Hand Shaft



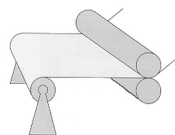
Mounting holes: 0.22" [5.6mm] Dia.

Applications

Winding equipment



Spooling



Positioning

