



Interconnect Product
CATALOG Q700





Quest Network Products Warranty

QUEST Technology International Inc., carries a **LIFETIME** warranty on all Category-Rated link components and a three year warranty on all Active Networking Products, from the date of purchase. QUEST Technology warrants all products to be free from manufacturing and or material defects. This warranty will not extend to any product, which has been subject to misuse, negligence, accident or improper installation or used in the violation of instructions. QUEST's liability shall be limited to the repair and or replacement of our product. QUEST Technology assumes no liability with respect to the use of its products including merchantability or the fitness for a particular use. QUEST technology assumes no liability for any consequential damages directly or indirectly caused from the use of our products or from any other cause if proven defective.



Warranty

QUEST Technology International Inc. warrants all other products to be free from any manufacturing and/or material defects for a period of one year from the date of purchase. This warranty will not extend to any product that has been subject to misuse, negligence, accident, improper installation, or used in the violation of instructions. QUEST's liability shall be limited to the repair and/or replacement of our products. QUEST Technology assumes no liability with respect to the use of its products including merchantability or fitness for a particular use. QUEST Technology assumes no liability for any consequential damages caused directly or indirectly by the use of our products or from any other cause if proven defective. This warranty extends to all the products listed in QUEST's current price list.



Lifetime Warranty Termination Tools

QUEST Technology International Inc. warrants its termination tools to be free from any manufacturing and or material defects. This warranty extends for the **LIFETIME** of the tool from the date of purchase. This warranty will not extend to any tool that has been subject to misuse, negligence, abuse, or altered in any manner; or used in the violation of instructions. This warranty excludes any wearable components; such as crimp die sets or strip blade sets. QUEST's liability shall be limited to the repair and or replacement of the tool. QUEST Technology assumes no liability with respect to the use of its tools including merchantability and/or fitness for a particular use. QUEST Technology assumes no liability for any consequential damage directly or indirectly caused from the use of its tools or from any other cause if proven defective.

Our Quest

Our Quest

QUEST Technology International is a new interconnect supplier offering leading edge capabilities, business and supply chain solutions for our distributors worldwide. QUEST provides quality, solutions oriented and competitively priced interconnect active and passive components, technical support and cross-referencing to better serve the distribution marketplace and its customers. QUEST is a supplier who provides a stable source of quality products for lan networking, telecommunications, broadcast, value-added, security, home entertainment, MRO and OEM commercial and residential markets.

Our Products

Our Products

QUEST Technology International offers a diverse product selection with over 750 interconnect products including complete solution networking active and passive for data and voice, RF connectors and adapters, installation tools and testers, computer connectivity, cable assemblies CATV/MATV/Satellite and Home-Theater. Our products are available through authorized QUEST Technology Distributors Worldwide.

Our Confidence

Our Confidence

QUEST Technology International warrants all category-rated link components for the lifetime of its use. This warranty covers products subject to proper installation and use, for material/workmanship and performance defects and is limited to the repair or replacement of these products. Active Network Channel components are warranted for a period of 3 years from date of purchase for material/workmanship and performance limited to the repair or replacement of these products. All other product are warranted under distributor terms / policies / conditions. Please Consult your local distributor.

Index



Lan Connectivity

- Patch Panels - CAT5e Loaded / Unloaded..... 2-3
- CAT3 / CAT5e Keystone Jacks..... 4-5
- Faceplates..... 6-9
- Surface Mount Boxes..... 10-11
- CAT5e Patch Cables..... 12
- Modular Plugs / Modular Adapters..... 13
- Network Testers..... 14-15
- Fiber Optic Products..... 16-17
- Active Network Products..... 18-21



Wire Management

- Raceway System..... 22
- Cable Ties and Fasteners..... 23
- Relay Racks / Equipment Cabinets..... 24
- Cable Managers / Wall Brackets..... 25
- Shelves / Trays..... 26-27



Telephone

- Wall Plates..... 28
- Surface Boxes / Couplers / Adapters..... 29
- Cable Assemblies / Bulk Cable..... 30



Computer

- D-Subminiature Gender Adapters / Data Switches..... 31
- Computer Cable Assemblies..... 32-33
- D-Subminiature Connectors..... 34
- D-Subminiature Hoods / Hardware..... 35

RF Coaxial Connectors

- BNC 50 and 75 OHM Connectors..... 36-38
- BNC Specialty Connectors / BNC Faceplates..... 39
- N Series..... 40
- UHF Series..... 41
- Mini-UHF, TNC, Twin-Axial..... 42
- F Series..... 43-45
- Interseries Adapters..... 46-49



Installation Tools

- Standard RF Crimp Tools..... 50
- Ratchet RF Crimp Tools..... 51
- Strippers and Cable Cutters..... 52-54
- Punch-Down Tools..... 55
- Modular Crimp Tools..... 56-57
- Lineman's Butt Set /Tone Generator and Probe..... 57
- Fiber Optic Termination Kit..... 58



CATV / MATV / Satellite

- Splitters / Signal Combiners..... 60-62
- Switches / Signal Amplifiers / Impedance Transformers..... 63-65



Audio / Video / Home Theater

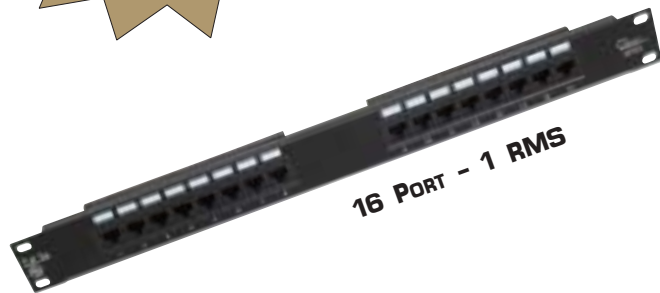
- Video / DBS Wall Plates..... 69
- Video / Audio Cable Assemblies..... 66-68
- Home Theater Wall Plates..... 70-71



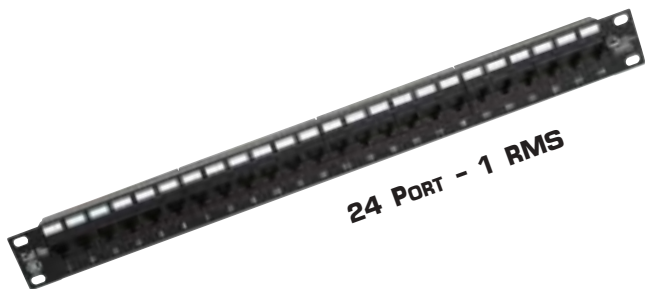
Appendix

- Glossary of Terms..... 72-73
- Product Index..... 74-75
- Connector Termination Instructions..... 76
- Part Number Index..... 77-79

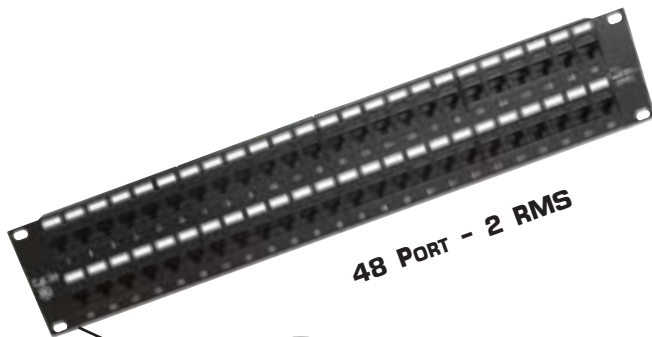




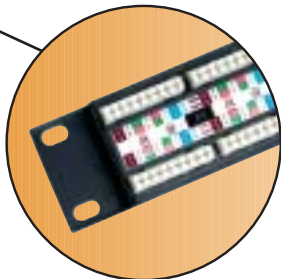
16 PORT - 1 RMS



24 PORT - 1 RMS



48 PORT - 2 RMS



Universal 568A & 568B
Wiring with Color-coded Labels



QUEST's Category 5e series patch panels provide several options for cross-connect solutions. They are Category 5e compliant, which meet or exceed TIA/EIA 568-A specifications and are offered in 16, 24 and 48 port configurations for 19" horizontal rack-mount installation. In addition, a 12-port "mini" vertical wall-mount panel is offered for small office cross connect applications. The panels are universally configured for both 568A and 568B wiring standards with easy to read, color-coded labels indicating the proper wiring scheme, and are designed with double folded frames offering outstanding resistance to twisting. The PC boards are protected with a terminal housing cover to protect them from damage when using a punch down tool. Termination is with 110 blocks, which accept 22-24 AWG cable.

FEATURES:

- 50u" GOLD PLATED CONTACTS
- DOUBLE FOLDED FRAMES
- 568A AND 568B UNIVERSAL WIRING
- PROTECTIVE PC BOARD COVERS
- UL LISTED

ITEM #	DESCRIPTION
NPP-1012	12 PORT CAT5e MINI PATCH PANEL, WITH BRACKET
NPP-1016	16 PORT CAT5e 19" PATCH PANEL
NPP-1024	24 PORT CAT5e 19" PATCH PANEL
NPP-1048	48 PORT CAT5e 19" PATCH PANEL



12 PORT - MINI VERTICAL
WITH 89D BRACKET

QUEST's line of unloaded patch panels offer a versatile way to adapt various inserts allowing custom configurations for multimedia cross-connect applications. These panels are numbered and accept our iconable line of modular bezels for voice or CAT5e keystone jacks. In addition, other bezels designed to fit these panels include applications for BNC, F-Video, SC and ST Fiber connectivity. Also featured are blank inserts to plug unused ports. To identify the ports, the insert bezels can be identified with our line of blank or marked color-coded icons.

ITEM # **DESCRIPTION**

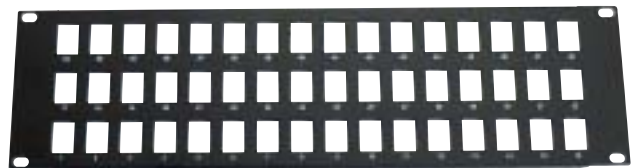
NBP-2016	16 PORT BLANK PATCH PANEL
NBP-2024	24 PORT BLANK PATCH PANEL
NBP-2048	48 PORT BLANK PATCH PANEL
NIN-1000	ICONABLE KEYSTONE BEZEL - BLACK
NIN-1002	ICONABLE KEYSTONE BEZEL - BLUE
NIN-1003	ICONABLE KEYSTONE BEZEL - RED
NIN-1005	ICONABLE KEYSTONE BEZEL - YELLOW
NIN-1006	ICONABLE KEYSTONE BEZEL - GREEN
NIN-1008	ICONABLE KEYSTONE BEZEL - WHITE
NIN-1500	COAX MODULAR BEZEL - WHITE
NIN-1501	BLANK MODULAR BEZEL - WHITE
NIN-1502	F-81 MODULAR BEZEL - WHITE
NIN-1503	SC FIBER MODULAR BEZEL - WHITE
NIN-1504	ST FIBER MODULAR BEZEL - WHITE
NIN-2001	ICON TREE - MARKED - BLACK
NIN-2002	ICON TREE - MARKED - BLUE
NIN-2003	ICON TREE - MARKED - RED
NIN-2004	ICON TREE - MARKED - ORANGE
NIN-2005	ICON TREE - MARKED - YELLOW
NIN-2006	ICON TREE - MARKED - GREEN
NIN-2007	ICON TREE - MARKED - IVORY
NIN-2008	ICON TREE - MARKED - WHITE
NIN-3002	ICONS - UNMARKED - BLUE
NIN-3003	ICONS - UNMARKED - RED
NIN-3005	ICONS - UNMARKED - YELLOW
NIN-3006	ICONS - UNMARKED - GREEN
NIN-3008	ICONS - INMARKED - WHITE



16 PORT - 1 RMS



24 PORT - 2 RMS



48 PORT - 3 RMS



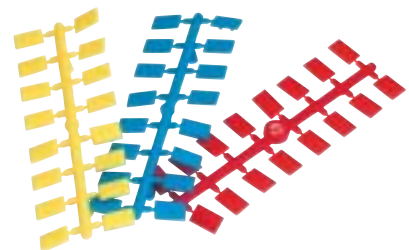
ICONABLE KEYSTONE BEZELS



MODULAR BEZELS



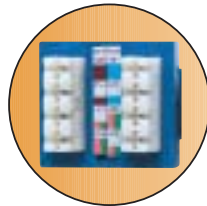
UNMARKED COLOR ICONS



MARKED ICON TREES



Universal 568A & 568B Wiring



90° CONFIGURATION



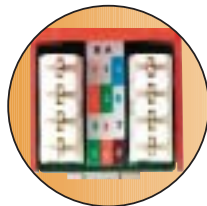
BLACK BLUE RED ORANGE



YELLOW GREEN IVORY WHITE



Universal 568A & 568B Wiring



180° CONFIGURATION



BLACK BLUE RED ORANGE



YELLOW GREEN IVORY WHITE

QUEST's line of Category 5e RJ-45 8 conductor keystone jacks meet or exceed TIA/EIA 568-A requirements and can be used with our entire line of multi-outlet faceplates or can be installed on QUEST's line of blank patch panels for added versatility. They are available in 90° or 180° designs, 8 different colors and are universally wired for either 568A or 568B wiring configurations.

FEATURES:

- 50u" GOLD PLATED CONTACTS
- 568A OR 568B UNIVERSAL WIRING
- UL LISTED
- AVAILABLE IN 8 COLORS
- 90° OR 180° DESIGNS

ITEM #	DESCRIPTION
NKJ-5101	90° CAT5e KEYSTONE JACK 568A/B - BLACK
NKJ-5102	90° CAT5e KEYSTONE JACK 568A/B - BLUE
NKJ-5103	90° CAT5e KEYSTONE JACK 568A/B - RED
NKJ-5104	90° CAT5e KEYSTONE JACK 568A/B - ORANGE
NKJ-5105	90° CAT5e KEYSTONE JACK 568A/B - YELLOW
NKJ-5106	90° CAT5e KEYSTONE JACK 568A/B - GREEN
NKJ-5107	90° CAT5e KEYSTONE JACK 568A/B - IVORY
NKJ-5108	90° CAT5e KEYSTONE JACK 568A/B - WHITE
NKJ-5201	180° CAT5e KEYSTONE JACK 568A/B - BLACK
NKJ-5202	180° CAT5e KEYSTONE JACK 568A/B - BLUE
NKJ-5203	180° CAT5e KEYSTONE JACK 568A/B - RED
NKJ-5204	180° CAT5e KEYSTONE JACK 568A/B - ORANGE
NKJ-5205	180° CAT5e KEYSTONE JACK 568A/B - YELLOW
NKJ-5206	180° CAT5e KEYSTONE JACK 568A/B - GREEN
NKJ-5207	180° CAT5e KEYSTONE JACK 568A/B - IVORY
NKJ-5208	180° CAT5e KEYSTONE JACK 568A/B - WHITE
NKJ-5001	CAT5e RJ45 IN-LINE COUPLER



CAT 5e IN-LINE coupler RJ-45 8 CONTACT. Allows cabling to be lengthened without compromising signal integrity. PC board construction.

QUEST offers 6 position, 6 contact and 8 position, 8 contact Category 3/4 modular keystone jacks for data and voice applications. These jacks are compliant with Category 3/4 requirements for connecting hardware. They can be wired without tools using the termination cap and insulation displacement contacts for ease of installation of all 4 pairs simultaneously. Wire range is 22-26 AWG solid or stranded wire.



6P/6C Ivory



6P/6C Black



8P/8C Black

ITEM # **DESCRIPTION**

NKJ-4601	6P/6C CATEGORY 3 JACK- BLACK
NKJ-4608	6P/6C CATEGORY 3 JACK - IVORY
NKJ-4801	8P/8C CATEGORY 3 JACK- BLACK

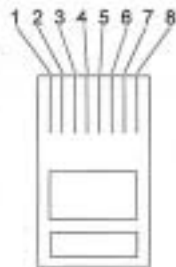
Why are there two standard color codes for LAN wiring?

Although no clear answer exists the fact is there just are. The two approved color code schemes for TIA/EIA 568A are 568A and 568B not to be confused with the standard itself. The only difference between the two codes is that the green and orange pairs are reverse. There are some very good reasons to know the two codes, which include the following:

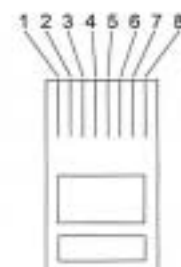
1. The customer or jobber has a stated preference.
2. Some material for the job has already been purchased and it is of only one configuration of color code.
3. There is existing wiring already established with a particular color code.

If none of these conditions apply the only basic industry guide lines are that 568B color code is used primarily for commercial installations and 568A color code is used primarily for residential installations. The main concern is that you keep the same color code throughout any particular link in the channel.

356A, T568B & WECO TWISTED PAIR		
PAIR ID	T568B PIN#	TWISTED PAIR COLOR
T2	1	
R2	2	
T3	3	
R1	4	
T1	5	
R3	6	
T4	7*	
R4	8*	



T568A TWISTED PAIR		
PAIR ID	T568A PIN#	TWISTED PAIR COLOR
T3	1	
R3	2	
T2	3	
R1	4	
T1	5	
R2	6	
T4	7	
R4	8	





1 PORT IVORY



1 PORT WHITE



2 PORT IVORY



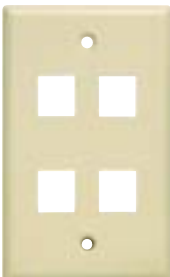
2 PORT WHITE



3 PORT IVORY



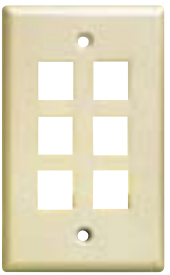
3 PORT WHITE



4 PORT IVORY



4 PORT WHITE



6 PORT IVORY



6 PORT WHITE

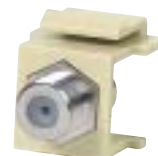
QUEST's standard series multimedia faceplates offer an economical solution for workstation connectivity. They accommodate category 3 and higher keystone jacks and a complete series of snap-in modules for RF and video applications. The standard series faceplates are designed to fit standard single gang electrical boxes, are offered in white and ivory and come complete with mounting screws.

The snap-in modules offer versatility in configuring communication interfaces to support audio, video and security applications. The snap-in modules are offered in white and ivory and are designed to snap in place from the rear.

ITEM #	DESCRIPTION
NFP-1017	1 PORT MULTIMEDIA FACEPLATE - IVORY
NFP-1018	1 PORT MULTIMEDIA FACEPLATE - WHITE
NFP-1027	2 PORT MULTIMEDIA FACEPLATE - IVORY
NFP-1028	2 PORT MULTIMEDIA FACEPLATE - WHITE
NFP-1037	3 PORT MULTIMEDIA FACEPLATE - IVORY
NFP-1038	3 PORT MULTIMEDIA FACEPLATE - WHITE
NFP-1047	4 PORT MULTIMEDIA FACEPLATE - IVORY
NFP-1048	4 PORT MULTIMEDIA FACEPLATE - WHITE
NFP-1067	6 PORT MULTIMEDIA FACEPLATE - IVORY
NFP-1068	6 PORT MULTIMEDIA FACEPLATE - WHITE
NIN-1107	BLANK COVER INSERT - IVORY
NIN-1108	BLANK COVER INSERT - WHITE
NIN-1207	F INSERT - LOADED - IVORY
NIN-1208	F INSERT - LOADED - WHITE
NIN-1307	BNC INSERT - LOADED - IVORY
NIN-1308	BNC INSERT - LOADED - WHITE



BLANK INSERT IVORY



F-81 INSERT IVORY



BNC INSERT IVORY



BLANK INSERT WHITE



F-81 INSERT WHITE

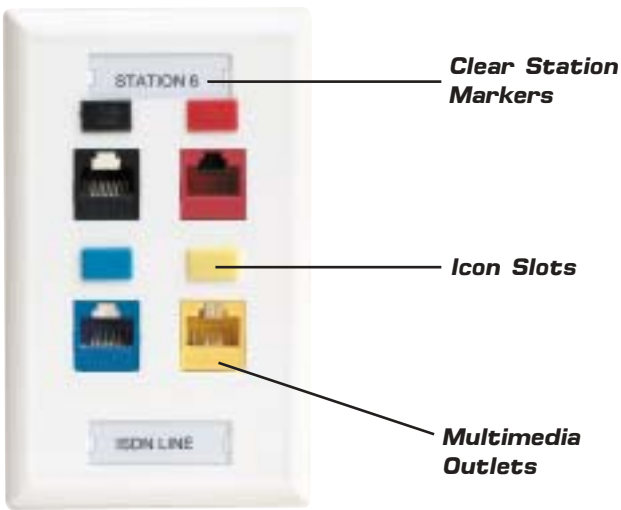


BNC INSERT WHITE

QUEST's Iconable Multimedia Series Faceplates are designed where station identification is required. This series accepts QUEST's line of Category 3 and higher keystone jacks. They also feature slots to facilitate insertion of icons for color-coding application or department identification. Additionally, each faceplate features clear station labels for station ID. They are offered in 1, 2, 4 and 6 port configurations and in ivory and white colors. They come complete with mounting screws, station labels and clear plastic overlays. The snap-in series of modules are also compatible with the Iconable series as shown for the standard series faceplates on page 6.

ITEM # **DESCRIPTION**

NFP-2017	1 PORT ICONABLE FACEPLATE - IVORY
NFP-2018	1 PORT ICONABLE FACEPLATE - WHITE
NFP-2027	2 PORT ICONABLE FACEPLATE - IVORY
NFP-2028	2 PORT ICONABLE FACEPLATE - WHITE
NFP-2047	4 PORT ICONABLE FACEPLATE - IVORY
NFP-2048	4 PORT ICONABLE FACEPLATE - WHITE
NFP-2067	6 PORT ICONABLE FACEPLATE - IVORY
NFP-2068	6 PORT ICONABLE FACEPLATE - WHITE



1 PORT IVORY



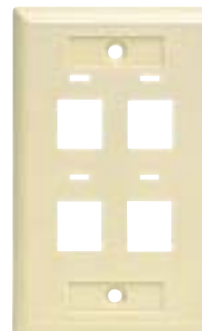
1 PORT WHITE



2 PORT IVORY



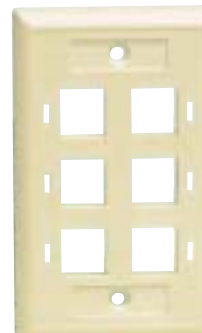
2 PORT WHITE



4 PORT IVORY



4 PORT WHITE



6 PORT IVORY

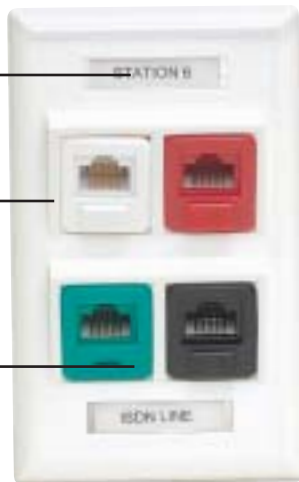


6 PORT WHITE

Clear Station Markers

Angled Outlets for improved wall clearance

Compatible with QUEST bezels



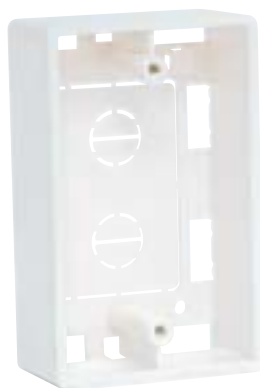
1 PORT WHITE



2 PORT WHITE



4 PORT WHITE

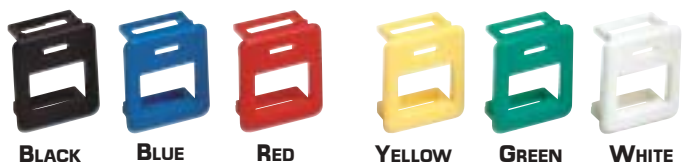


OUTLET BOX

QUEST's angled multimedia faceplate series are designed with 45° molded outlets, which optimize bend radius for applications where clearance space is critical. These faceplates work in conjunction with a series of Iconable bezel inserts, which accommodate Category 3, 5, 5e and higher keystone jacks in various colors for workstation identification. In addition, a series of multimedia bezels are offered designed to accept video, coax and fiber connectors. A single gang surface mount box is offered for applications where surface mounting is required. The junction box also accommodates other single gang faceplates.

ITEM #	DESCRIPTION
NFP-3018	1 PORT 45° ANGLED FACEPLATE - WHITE
NFP-3028	2 PORT 45° ANGLED FACEPLATE - WHITE
NFP-3048	4 PORT 45° ANGLED FACEPLATE - WHITE
NFP-3000	SINGLE GANG OUTLET BOX - WHITE
NIN-1008	ICONABLE KEYSTONE JACK BEZEL - WHITE
NIN-1000	ICONABLE KEYSTONE JACK BEZEL - BLACK
NIN-1002	ICONABLE KEYSTONE JACK BEZEL - BLUE
NIN-1003	ICONABLE KEYSTONE JACK BEZEL - RED
NIN-1006	ICONABLE KEYSTONE JACK BEZEL - GREEN
NIN-1005	ICONABLE KEYSTONE JACK BEZEL - YELLOW
NIN-1500	COAX MODULAR BEZEL - WHITE
NIN-1501	BLANK MODULAR BEZEL - WHITE
NIN-1502	F FEED-THRU MODULAR BEZEL - WHITE
NIN-1503	SC FIBER MODULAR BEZEL - WHITE
NIN-1504	ST FIBER MODULAR BEZEL - WHITE

ICONABLE KEYSTONE BEZELS



MODULAR BEZELS



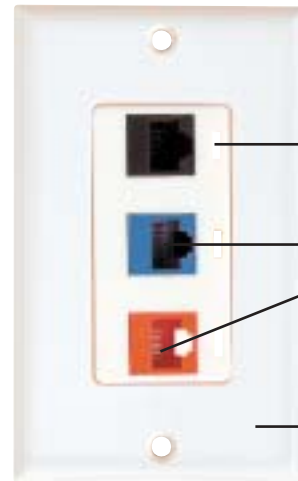
*All Quest communications jacks will fit above faceplates
Please see pages 3 for icon inserts*

The QUEST Décor series of contemporary styled faceplates match the appearance of many electrical wiring faceplates used in residential and commercial installations. This modular series allows the installation of plastic single gang or stainless steel single or dual gang faceplates with a single, iconable, 3-outlet module base insert, which accepts QUEST's line of Category rated keystone jacks. In addition, a variety of modular inserts are offered for video and RF connectors as well as a blank insert for disabling any unused port. The faceplate module base and faceplates mount into any standard electrical box.

FEATURES:

- MULTIMEDIA VERSATILITY
- ICONABLE OUTLET MODULE
- PLASTIC OR STAINLESS STEEL
- CONTEMPORARY DÉCOR STYLING

ITEM #	DESCRIPTION
NFP-4011	DECOR PLASTIC SINGLE GANG FACEPLATE - WHITE
NFP-4012	DECOR STAINLESS STEEL SINGLE GANG FACEPLATE
NFP-4013	DECOR SATINLESS STEEL DUAL GANG FACEPLATE
NFP-4014	DECOR 3-OUTLET MODULAR BASE - WHITE
NIN-1108	BLANK COVER INSERT - WHITE
NIN-1208	F FEED-THRU INSERT LOADED - WHITE
NIN-1308	BNC RF INSERT LOADED - WHITE



Slots for Icons

Data/Voice Outlets

Contemporary Décor Style Face Plates



SINGLE GANG PLASTIC



SINGLE GANG STAINLESS STEEL



3 OUTLET MODULE



DUAL GANG STAINLESS STEEL

*All Quest communications jacks will fit above faceplates
Please see pages 3 for icon inserts*



BLANK INSERT



F-81 INSERT



BNC INSERT

Dual & Triple Gang Plastic Faceplates are available - See page 71

SURFACE MOUNT BOXES WITH CAT5e JACKS

**Lifetime
Warranty**

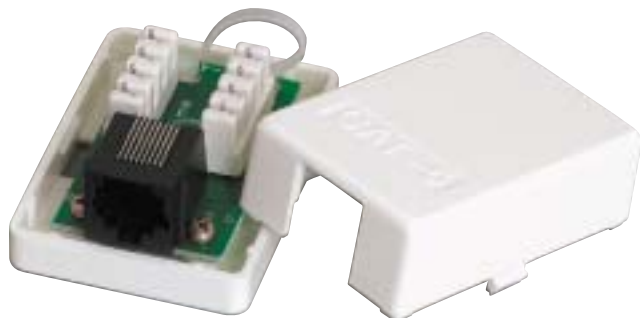
**Category
5e**



SINGLE 110 CAT5e



DUAL 110 CAT5e



SINGLE KRONE CAT5e



DUAL KRONE CAT5e

QUEST offers a variety of surface mount boxes with integral CAT5e jacks for installations where cost-effective surface terminations are required. The boxes are offered in single and dual outlet versions complete with CAT5e jacks. The jacks feature PC board construction, meet TIA/EIA 568-A requirements and are configured for 568A and 568B wiring standards. Terminations include 110 and Krone and are packaged complete with mounting screws and double-sided adhesive tape.

FEATURES:

- CAT5e RATED
- INTEGRAL BOX AND JACK
- COST EFFECTIVE
- UNIVERSAL 568A OR 568B WIRING
- LIFETIME WARRANTY
- HARDWARE INCLUDED

ITEM

DESCRIPTION

NSB-5120	1 PORT SURFACE BOX WITH CAT5e JACK - PC BOARD-110 TERMINATION - WHITE
NSB-5130	2 PORT SURFACE BOX WITH CAT5e JACKS - PC BOARD-110 TERMINATIONS-WHITE
NSB-5100	1 PORT SURFACE BOX WITH CAT5e JACK -PC BOARD-KRONE TERMINATION - WHITE
NSB-5110	2 PORT SURFACE BOX WITH CAT5e JACKS- PC BOARD-KRONE TERMINATION - WHITE

The QUEST series of surface mount boxes offers a wide choice of surface termination choices. They are available in single through 6 outlet port configurations and most are offered with a choice of ivory or white case colors. The single and dual are offered with shutter windows, which protect against dust and contamination while not in use. They are compact and are easy to install on flat surfaces utilizing the enclosed mounting screws or double-side adhesive tape. These boxes are designed to accommodate QUEST's line of category rated keystone jacks as well as other competitive types.

FEATURES:

- MULTIPLE OUTLET CHOICES
- EASY TO INSTALL
- COST EFFECTIVE
- COMPLETE WITH MOUNTING HARDWARE

ITEM #	DESCRIPTION
NSB-6140	1 PORT SURFACE KEYSTONE JACK BOX WITH SHUTTER - WHITE
NSB-6240	2 PORT SURFACE KEYSTONE JACK BOX WITH SHUTTER - WHITE
NSB-5150	2 PORT SURFACE KEYSTONE JACK BOX - WHITE - FOR 90° JACKS ONLY
NSB-5151	2 PORT SURFACE KEYSTONE JACK BOX - IVORY - FOR 90° JACKS ONLY
NSB-5160	4 PORT SURFACE KEYSTONE JACK BOX - WHITE - FOR 90° JACKS ONLY
NSB-5161	4 PORT SURFACE KEYSTONE JACK BOX - IVORY - FOR 90° JACKS ONLY
NSB-5170	6 PORT SURFACE KEYSTONE JACK BOX - WHITE - FOR 90° JACKS ONLY
NSB-5171	6 PORT SURFACE KEYSTONE JACK BOX - IVORY - FOR 90° JACKS ONLY



SINGLE UNLOADED SHUTTER



DUAL UNLOADED SHUTTER



DUAL IVORY



DUAL WHITE



6 PORT BOX



4 PORT BOX