



**Supplement
Product Catalog
Q502**

D-SUBMINIATURE CONNECTORS AND HOODS

New are DB-37 and DB-50 D-Subminiature crimp style connectors. These complement our complete line of crimp style D-Sub connectors found in our Master Catalog. Also, heavy-duty metal hoods for 37 and 50 pin D-Sub connectors are being offered which mate with these connectors.

ITEM #	DESCRIPTION	FIG.
DSC-2137	37 PIN CRIMP D-SUB MALE	1
DSC-2237	37 PIN CRIMP D-SUB FEMALE	2
DSC-2150	50 PIN CRIMP D-SUB MALE	1
DSC-2250	50 PIN CRIMP D-SUB FEMALE	2
DSH-5437	37 PIN D-SUB METAL HOOD	3
DSH-5450	50 PIN D-SUB METAL HOOD	3
DSH-5509	9 PIN METAL HOOD W/ GROMMETS	N/S
DSH-5525	25 PIN METAL HOOD W/ GROMMETS	N/S



FIG. 1



FIG. 2



FIG. 3

GROMMET SETS

Grommet sets are now being offered in various sizes for metal D-sub hoods and are offered in sets of 5 different diameters that accommodate various cable sizes. These are offered for 9, 15, 25, 37 and 50 hood sizes.

ITEM #	DESCRIPTION	FIG.
DSG-1915	9 & 15 PIN HOOD GROMMET SET 5,6,7,8,9,MM I.D.	4
DSG-1025	25 PIN HOOD GROMMET SET 6,7,8,9,10 MM I.D.	4
DSG-3750	37 & 50 PIN HOOD GROMMET SET 9,10,11.5,13,14.5MM.4	



FIG. 4

HIGH-DENSITY GENDER ADAPTERS

Quest offers various solutions for converting d-subminiature gender configurations and is adding new high-density models to the line. These include 15 pin Male-to-Male and 15 pin Female-to-Female types. The configuration is 3 rows of 5 contacts each in a thin mini space saving shell.

ITEM #	DESCRIPTION	FIG.
NGC-1077	D15 M-M HIGH DENSITY MINI GENDER CHANGER	5
NGC-1088	D15 F-F HIGH DENSITY MINI GENDER CHANGER	6
NGC-5101	9F-25M NULL MODEM ADAPTER	N/S
NGC-5102	25F-25M NULL MODEM ADAPTER	N/S
NGC-5103	9F-9M NULL MODEM ADAPTER	N/S



FIG. 5



FIG. 6

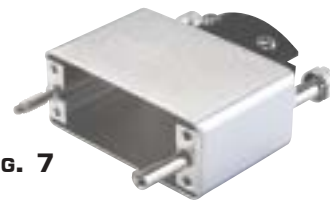


FIG. 7

V.35 CONNECTORS

Quest now offers a family of V.35 connectors, hoods and contacts. The hoods come with thumbscrews and cable strain relief. Connectors require contacts which are sold separately.

ITEM #	DESCRIPTION	FIG.
DSV-1000	V.35 HOOD W/THUMBSCREWS & STRAIN RELIEF	7
DSV-1001	V.35 MALE CONNECTOR	8
DSV-1002	V.35 FEMALE CONNECTOR	9
DSV-1003	V.35 MALE CONTACTS - LOOSE - 100/BAG	10
DSV-1004	V.35 FEMALE CONTACTS - LOOSE - 100/BAG	11



FIG. 8

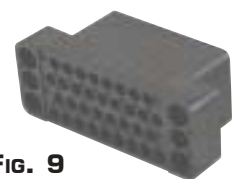


FIG. 9



FIG. 10



FIG. 11