



*Interconnect Product*  
**CATALOG Q700**



In addition to D-subminiature connectors and computer cables, QUEST offers gender adapters, which allow changes in gender configurations and pin count sizes. QUEST also offers data switch boxes for RS-232 applications in manual and automatic designs.

## GENDER ADAPTERS

ITEM #	DESCRIPTION
NGC-1022	D9 FEMALE TO D9 FEMALE SLIMLINE GENDER ADAPTER
NGC-1011	D9 MALE TO D9 MALE SLIMLINE GENDER ADAPTER
NGC-1044	D15 FEMALE TO D15 FEMALE SLIMLINE GENDER ADAPTER
NGC-1033	D15 MALE TO D15 MALE SLIMLINE GENDER ADAPTER
NGC-1066	D25 FEMALE TO D25 FEMALE SLIMLINE GENDER ADAPTER
NGC-1055	D25 MALE TO D25 MALE SLIMLINE GENDER ADAPTER
NGC-2216	D9 MALE TO D25 FEMALE GENDER ADAPTER
NGC-2225	D9 FEMALE TO D25 MALE GENDER ADAPTER
NGC-2257	D25 MALE TO 36 PIN MALE CENTRONICS ADAPTER

## DATA SWITCH BOXES

ITEM #	DESCRIPTION
NGC-3020	D25 RS-232 A-B DATA SWITCH BOX
NGC-3040	D25 RS-232 AUTOMATIC A-B DATA SWITCH BOX



D9 FEMALE-D9 FEMALE



D9 MALE-D9 MALE



D15 FEMALE-D15 FEMALE



D15 MALE-D15 MALE



D25 FEMALE-D25 FEMALE



D25 MALE-D25 MALE



D9 MALE-D25 FEMALE



D9 FEMALE-D25 MALE



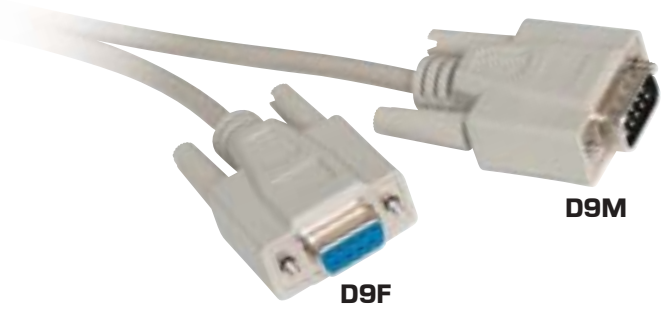
D25 A-B Auto Switch Box



D25 A-B Switch Box



D25 MALE-36 P CENTRONICS



QUEST offers a quality line of the most popular molded computer cable assemblies used for broadcast, audio, instrumentation and computer EIA RS-232 applications. The cables are constructed with high-quality materials and are warranted for life. The cable lineup includes printer cables, RS232 25 pin, RS232 9 pin, 36 pin Centronics, VGA in various lengths and configurations. All are fully shielded.

**FEATURES:**

- ALUMINUM MYLAR SHIELD
- TINNED COPPER DRAIN WIRE
- TINNED STRANDED COPPER CONDUCTORS
- MOLDED WITH THUMBSCREWS
- PVC JACKET
- LIFETIME WARRANTY

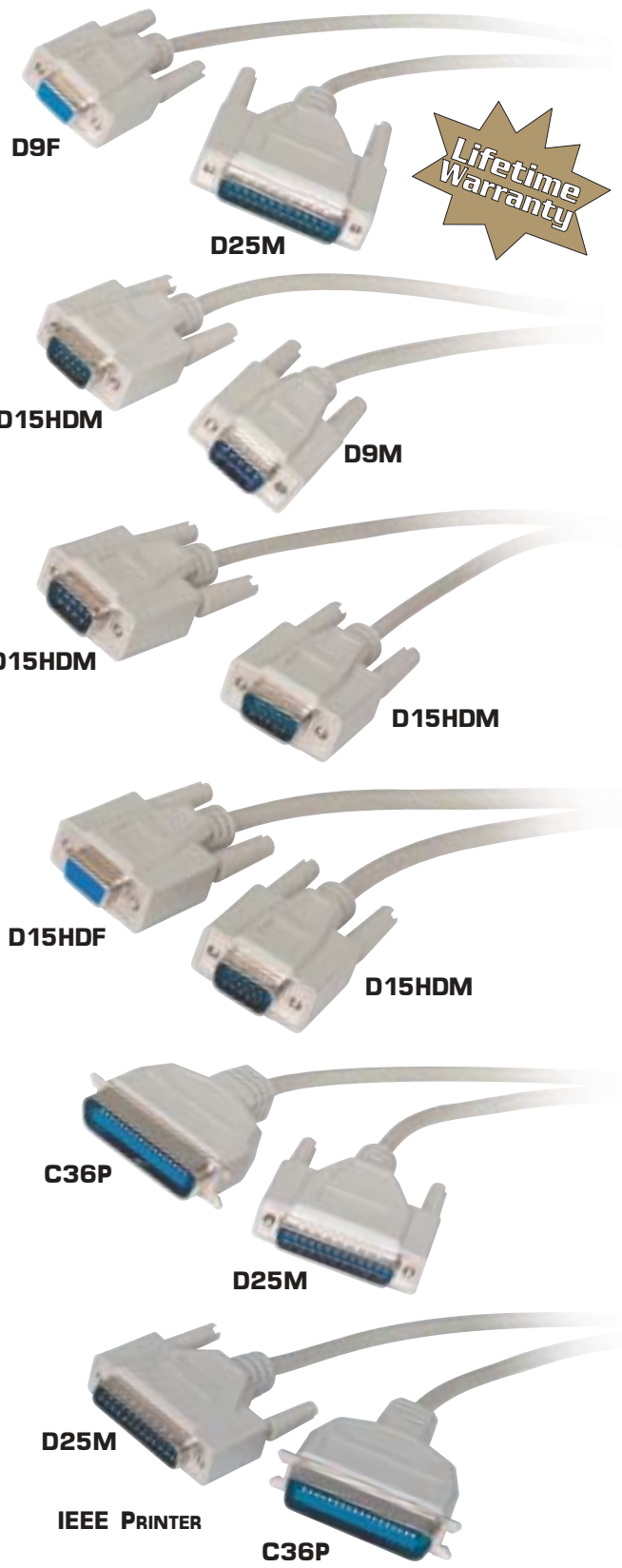
ITEM #	DESCRIPTION
NCC-7706	6' 36P CENTRONICS MALE TO 36P CENTRONICS MALE
NCC-7710	10' 36P CENTRONICS MALE TO 36P CENTRONICS MALE
NCC-7725	25' 36P CENTRONICS MALE TO 36P CENTRONICS MALE
NCC-5606	6' D25 MALE TO D25 FEMALE
NCC-5610	10' D25 MALE TO D25 FEMALE
NCC-5625	25' D25 MALE TO D25 FEMALE
NCC-5506	6' D25 MALE TO D25 MALE
NCC-5510	10' D25 MALE TO D25 MALE
NCC-5525	25' D25 MALE TO D25 MALE
NCC-1206	6' D9 MALE TO D9 FEMALE
NCC-1210	10' D9 MALE TO D9 FEMALE
NCC-2206	6' D9 FEMALE TO D9 FEMALE
NCC-2210	10' D9 FEMALE TO D9 FEMALE
NCC-1106	6' D9 MALE TO D9 MALE
NCC-1110	10' D9 MALE TO D9 MALE



As a continuation of the computer cable selection, QUEST offers other cable assemblies, such as IEEE printer cables that conform to IEEE1284 specifications for high-speed bi-directional data transfer. Also high-density models for VGA applications are offered in various lengths.

**FEATURES:**

- ALUMINUM MYLAR SHIELD
- TINNED COPPER DRAIN WIRE
- TINNED STRANDED COPPER CONDUCTORS
- MOLDED WITH THUMBSCREWS
- PVC JACKET
- GOLD PLATED PINS
- MOLDED STRAIN RELIEF
- CONNECTOR GROUND INDENTS
- LIFETIME WARRANTY



ITEM #	DESCRIPTION
NCC-5206	6' D25 MALE TO D9 FEMALE
NCC-5210	10' D25 MALE TO D9 FEMALE
NCC-2910	10' D9 MALE TO D15 HIGH DENSITY MALE
NCC-9906	6' D15 HIGH DENSITY MALE TO D15 HIGH DENSITY MALE
NCC-9910	10' D15 HIGH DENSITY MALE TO D15 HIGH DENSITY MALE
NCC-9006	6' D15 HIGH DENSITY MALE TO D15 HIGH DENSITY FEMALE
NCC-9010	10' D15 HIGH DENSITY MALE TO D15 HIGH DENSITY FEMALE
NCC-5706	6' D25 MALE TO 36 PIN CENTRONICS PRINTER CABLE 25 CONDUCTORS
NCC-5710	10' D25 MALE TO 36 PIN CENTRONICS PRINTER CABLE 25 CONDUCTORS
NCC-5725	25' D25 MALE TO 36 PIN CENTRONICS PRINTER CABLE 25 CONDUCTORS
NCC-4006	6' IEEE D25 MALE TO 36 PIN CENTRONICS PRINTER CABLE 25 CONDUCTORS
NCC-4010	10' IEEE D25 MALE TO 36 PIN CENTRONICS PRINTER CABLE 25 CONDUCTORS



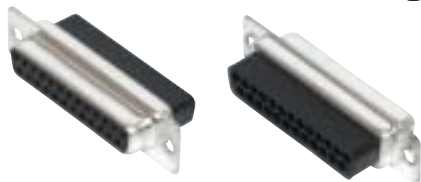
**SOLDER MALE**



**SOLDER FEMALE**



**CRIMP MALE**



**CRIMP FEMALE**



**HI-DENSITY MALE SOLDER**



**HI-DENSITY FEMALE SOLDER**



**HI-DENSITY MALE CRIMP**



**HI-DENSITY FEMALE CRIMP**

QUEST offers a comprehensive selection of D-subminiature connectors for use in serial and parallel port connections. These products are used in various applications requiring multi-conductor connectivity primarily for instrumentation and computer interconnect. QUEST offers them in solder and crimp styles in most pin configurations, male and female genders.

## SOLDER STYLE

ITEM #	DESCRIPTION
DSC-1109	9 PIN SOLDER D-SUB MALE
DSC-1209	9 PIN SOLDER D-SUB FEMALE
DSC-1115	15 PIN SOLDER D-SUB MALE
DSC-1215	15 PIN SOLDER D-SUB FEMALE
DSC-1125	25 PIN SOLDER D-SUB MALE
DSC-1225	25 PIN SOLDER D-SUB FEMALE
DSC-1137	37 PIN SOLDER D-SUB MALE
DSC-1237	37 PIN SOLDER D-SUB FEMALE
DSC-1150	50 PIN SOLDER D-SUB MALE
DSC-1250	50 PIN SOLDER D-SUB FEMALE
DSC-3109	15 PIN HIGH-DENSITY SOLDER D-SUB MALE
DSC-3209	15 PIN HIGH-DENSITY SOLDER D-SUB FEMALE
DSC-3126	26 PIN HIGH-DENSITY SOLDER D-SUB MALE
DSC-3226	26 PIN HIGH-DENSITY SOLDER D-SUB FEMALE

## CRIMP STYLE

ITEM #	DESCRIPTION
DSC-2109	9 PIN CRIMP D-SUB MALE
DSC-2209	9 PIN CRIMP D-SUB FEMALE
DSC-2115	15 PIN CRIMP D-SUB MALE
DSC-2215	15 PIN CRIMP D-SUB FEMALE
DSC-2125	25 PIN CRIMP D-SUB MALE
DSC-2225	25 PIN CRIMP D-SUB FEMALE
DSC-4115	15 PIN HIGH-DENSITY CRIMP D-SUB MALE
DSC-4215	15 PIN HIGH-DENSITY CRIMP D-SUB FEMALE
DSC-4126	26 PIN HIGH-DENSITY CRIMP D-SUB MALE
DSC-4226	26 PIN HIGH-DENSITY CRIMP D-SUB FEMALE