

Rounded Edge Multiple Tie Plates

specifications

The plastic tie mount when anchored to a solid plate shall have a minimum load of 120 pounds for 3 seconds. Surfaces that make wire contact and ejection pin locations shall be smooth, full radius, and free of burrs and flash. Impressions shall be less than .002". The minimum radius for corners and surfaces having contact with the wire bundles, cables and tubing shall be .05". The material shall be heat stabilized Nylon 6.6 per ASTM D 4066, PA 0121. The contoured multiple tie plates shall provide superior anchoring capability and protection from wear in all applications involving vibration and dynamic loads.



technical information

Material:	Heat stabilized Nylon 6.6
Flammability:	Meets UL94 V-2, passes FMVSS 302
Color:	Natural
Application temperature range:	-40°C to 115°C (-40°F to 239°F) continuous
Chemical resistance at 21°C (70°F):	Excellent resistance to common transportation fluid including: ethylene glycol, diesel fuel, gasoline, jet fuel, hydraulic fluid, transmission fluids and 10% sodium chloride solutions
Environmental compliance:	Meets 2000/53/EC ELV and 2002/95/EC RoHS standards and all industry standards for hazardous material content
Anchor force:	120 pounds for 3 seconds

key features and benefits

Rounded corners and edges	Protect adjacent wire bundles, cables, and tubing and can be used as parallel stacking spacers, preventing wire abrasion, especially in aircraft applications
Smooth, burr free surfaces	Improve resistance to abrasion, providing greater protection for wire bundles, cables, and tubing in high vibration applications
Multiple tie plate design	Uniformly anchors parallel wire bundles, cables, and tubing, consolidating parts and reducing the number of fasteners
Heat stabilized Nylon 6.6	Rated for service conditions -40°C to 115°C (-40°F to 239°F), providing an extended service life and high temperature resistance
Production Parts Approval Process (PPAP), 3-D, and International Materials Data Sheet (IMDS) capability	Meets the needs of Verband der Automobilindustrie (VDA) and Automotive Industry Action Group (AIAG) compliant documentation, allowing parts to be listed in IMDS site ID

applications

PANDUIT rounded edge multiple tie plates are a reliable and cost-effective solution to securing wire bundles, cables, and tubing in the aerospace, marine, mass/transit rail, large power distribution, white goods, and MRO markets. The smooth, full radius surfaces will provide abrasion protection to the cable

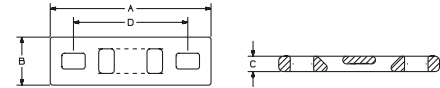
bundles in a high vibration application. The heat stabilized material allows aircraft manufacturers to use smaller diameter wire bundles, cables and tubing to reduce weight in the harnesses without being concerned with the higher wire temperatures.

Rounded Edge Multiple Tie Plates – Used with M, I, S, HS, LH, H Cable Ties

1 bundle #10 (M5) screw:	MTPC1H-E10-C39
2 bundles #10 (M5) screw:	MTPC2H-E10-C39
3 bundles #10 (M5) screw:	MTPC3H-E10-C39
4 bundles #10 (M5) screw:	MTPC4H-E10-C39
5 bundles #10 (M5) screw:	MTPC5H-E10-C39
6 bundles #10 (M5) screw:	MTPC6H-E10-C39
7 bundles #10 (M5) screw:	MTPC7H-E10-C39

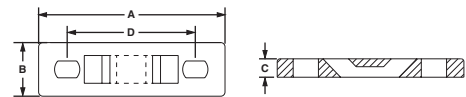
Rounded Edge Multiple Tie Plates

Natural Heat Stabilized Nylon 6.6 Rounded Edge Multiple Tie Plates – Heavy



Part Number	No. of Bundles	Used with Cable Ties	Length A		Width B		Height C		Hole Spacing D		Mounting Method	Mil. Std. Part Number	Std. Pkg. Qty.	Bulk Pkg. Qty.
			In.	mm	In.	mm	In.	mm	In.	mm				
MTPC1H-E10-C39	1	M, I, S, HS, LH, H	2.09	53.1	.63	16.0	.20	5.2	1.50	38.1	#10 (M5) Screw	—	100	1000
MTPC2H-E10-C39	2		3.59	91.2	.63	16.0	.20	5.2	3.00	76.2	#10 (M5) Screw	—	100	1000
MTPC3H-E10-C39	3		5.09	129.3	.63	16.0	.20	5.2	4.50	114.3	#10 (M5) Screw	—	100	1000
MTPC4H-E10-C39	4		6.59	167.4	.63	16.0	.20	5.2	6.00	152.4	#10 (M5) Screw	—	100	1000
MTPC5H-E10-C39	5		8.09	205.5	.63	16.0	.20	5.2	7.50	190.5	#10 (M5) Screw	—	100	1000
MTPC6H-E10-C39	6		9.59	243.6	.63	16.0	.20	5.2	9.00	228.6	#10 (M5) Screw	—	100	1000
MTPC7H-E10-C39	7		11.09	281.7	.63	16.0	.20	5.2	10.50	266.7	#10 (M5) Screw	—	100	1000

Related Products – Natural Nylon 6.6* Multiple Tie Plates – Standard



Part Number	No. of Bundles	Used With Cable Ties	Length A		Width B		Height C		Hole Spacing D		Mounting Method	Mil. Std. Part Number	Std. Pkg. Qty.	Bulk Pkg. Qty.
			In.	mm	In.	mm	In.	mm	In.	mm				
MTP1S-E6-C	1	M, I, S	1.75	44.5	.50	12.7	.13	3.2	1.25	31.8	#6 (M3) Screw	MS3339-1-9	100	1000
MTP1S-E10-C			1.75	44.5	.50	12.7	.13	3.2	1.25	31.8	#10 (M5) Screw	—	100	1000
MTP2S-E6-C	2	M, I, S	3.00	76.2	.50	12.7	.13	3.2	2.50	63.5	#6 (M3) Screw	MS3339-2-9	100	1000
MTP2S-E10-C			3.00	76.2	.50	12.7	.13	3.2	2.50	63.5	#10 (M5) Screw	—	100	1000
MTP3S-E6-C	3	M, I, S	4.25	108.0	.50	12.7	.13	3.2	3.75	95.3	#6 (M3) Screw	MS3339-3-9	100	1000
MTP3S-E10-C			4.25	108.0	.50	12.7	.13	3.2	3.75	95.3	#10 (M5) Screw	—	100	1000
MTP4S-E6-C	4	M, I, S	5.50	139.7	.50	12.7	.13	3.2	5.00	127.0	#6 (M3) Screw	MS3339-4-9	100	1000
MTP4S-E10-C			5.50	139.7	.50	12.7	.13	3.2	5.00	127.0	#10 (M5) Screw	—	100	1000
MTP5S-E6-C	5	M, I, S	6.75	171.5	.50	12.7	.13	3.2	6.25	158.8	#6 (M3) Screw	MS3339-5-9	100	1000
MTP5S-E10-C			6.75	171.5	.50	12.7	.13	3.2	6.25	158.8	#10 (M5) Screw	—	100	1000

Natural Nylon 6.6* Multiple Tie Plates – Heavy

MTP1H-E6-C	1	M, I, S, HS, LH, H	2.09	53.1	.63	16.0	.20	5.2	1.50	38.1	#6 (M3) Screw	MS3339-6-9	100	1000
MTP1H-E10-C			2.09	53.1	.63	16.0	.20	5.2	1.50	38.1	#10 (M5) Screw	—	100	1000
MTP2H-E6-C	2	M, I, S, HS, LH, H	3.59	91.2	.63	16.0	.20	5.2	3.00	76.2	#6 (M3) Screw	MS3339-7-9	100	1000
MTP2H-E10-C			3.59	91.2	.63	16.0	.20	5.2	3.00	76.2	#10 (M5) Screw	—	100	1000
MTP3H-E6-C	3	M, I, S, HS, LH, H	5.09	129.3	.63	16.0	.20	5.2	4.50	114.3	#6 (M3) Screw	MS3339-8-9	100	1000
MTP3H-E10-C			5.09	129.3	.63	16.0	.20	5.2	4.50	114.3	#10 (M5) Screw	—	100	1000
MTP4H-E6-C	4	M, I, S, HS, LH, H	6.59	167.4	.63	16.0	.20	5.2	6.00	152.4	#6 (M3) Screw	MS3339-9-9	100	1000
MTP4H-E10-C			6.59	167.4	.63	16.0	.20	5.2	6.00	152.4	#10 (M5) Screw	—	100	1000
MTP5H-E6-C	5	M, I, S, HS, LH, H	8.09	205.5	.63	16.0	.20	5.2	7.50	190.5	#6 (M3) Screw	MS3339-10-9	100	1000
MTP5H-E10-C			8.09	205.5	.63	16.0	.20	5.2	7.50	190.5	#10 (M5) Screw	—	100	1000
MTP6H-E6-C	6	M, I, S, HS, LH, H	9.59	243.6	.63	16.0	.20	5.2	9.00	228.6	#6 (M3) Screw	MS3339-11-9	100	1000
MTP6H-E10-C			9.59	243.6	.63	16.0	.20	5.2	9.00	228.6	#10 (M5) Screw	—	100	1000

*Available in natural heat stabilized Nylon 6.6. Add -39 to part number suffix.

WORLDWIDE SUBSIDIARIES AND SALES OFFICES

PANDUIT CANADA
Markham, Ontario
cs-cdn@panduit.com
Phone: 800.777.3300

PANDUIT EUROPE LTD.
London, UK
cs-emea@panduit.com
Phone: 44.20.8601.7200

PANDUIT SINGAPORE PTE. LTD.
Republic of Singapore
cs-ap@panduit.com
Phone: 65.6305.7575

PANDUIT JAPAN
Tokyo, Japan
cs-japan@panduit.com
Phone: 81.3.3767.7011

PANDUIT LATIN AMERICA
Jalisco, Mexico
cs-la@panduit.com
Phone: 52.333.777.6000

PANDUIT AUSTRALIA PTY. LTD.
Victoria, Australia
cs-aus@panduit.com
Phone: 61.3.9794.9020

For a copy of PANDUIT product warranties, log on to www.panduit.com/warranty



For more information
Visit us at www.panduit.com
Contact Customer Service by email: cs@panduit.com
or by phone: 800-777-3300 and reference WASP07

©2008 PANDUIT Corp.
ALL RIGHTS RESERVED.
WW-WASP07
8/2008