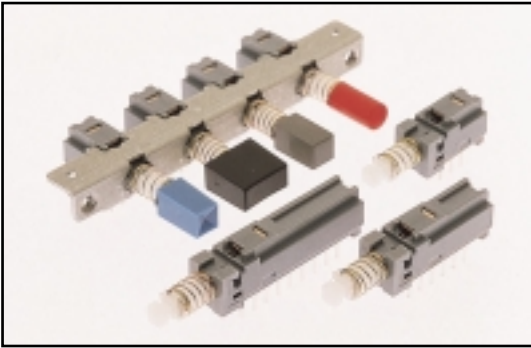


PUSHBUTTON SWITCHES



SPECIFICATIONS

Rating:	100mA @ 30 VDC
Contact Resistance:	20m max. initial @ 2-4 VDC, 100mA
Insulation Resistance:	100M Ω min.
Dielectric Strength:	1250 V rms @ sea level
Electrical Life:	≥ 10,000 cycles typical
Mechanical Life:	30,000 cycles
Operating Force:	2 Pole: 170 ± 100 g, 4 Pole: 230 ± 100 g 6 Pole: 300 ± 100 g
Operating Temp. Range:	-10° to + 60°C

MATERIALS

Housing:	Polycarbonate (UL94-HB) Standard or Valox (UL94-VO)
Actuator:	Duracon (UL94-VO) or Valox (UL94-HB)
Terminal Base:	Polycarbonate (UL94-HB) Standard
Moving Contacts:	Silver plated copper alloy Gold plate over nickel plated copper alloy
Terminal Seal:	Epoxy
Release Bar:	Steel/zinc plated
Chassis:	Steel/nickel plated or steel/zinc plated

HOW TO ORDER

Series	Pole	Mechanical Configuration	Bracket / Termination	Timing	Contact Material	Housing / Plunger Mtl.	Cap	Cap Color
MTH	2U 4U 6U	EE= Latching OA= Momentary	(None)= Std. PC Pin SNP= Snap-In PC Pin KZX= Mounting Bracket	N= Non-shorting S= Shorting	AG= Silver AU= Gold	(None)= UL94HB V= UL94VO	See Cap Section	

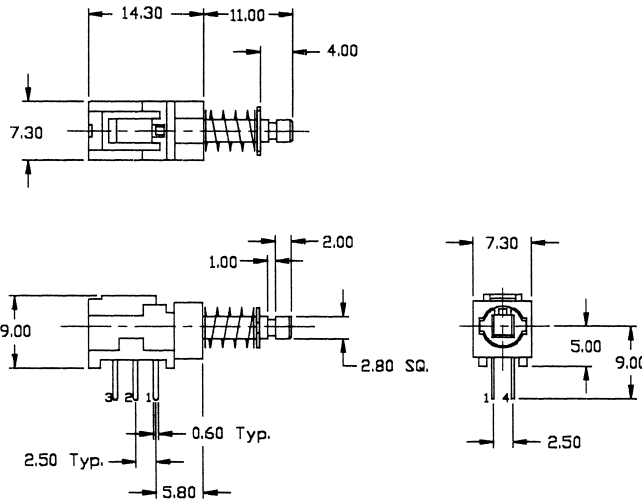
EXAMPLE

MTH → **6U** → **EE** → **SNP** → **N** → **AG** → **1R** → **LGr**

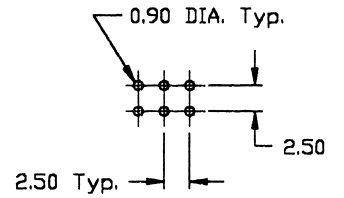
Note: To order modules with the special mounting bracket, insert "KZX" after "mechanical configuration".
(See Next Page For KZX Information) Example: MTH2UEE KZX N AG V X

SPECIFICATIONS SUBJECT TO CHANGE WITHOUT NOTICE.

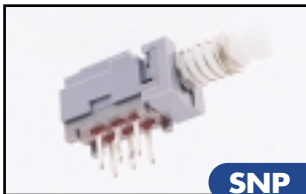
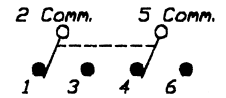
BRACKET / TERMINATION OPTIONS



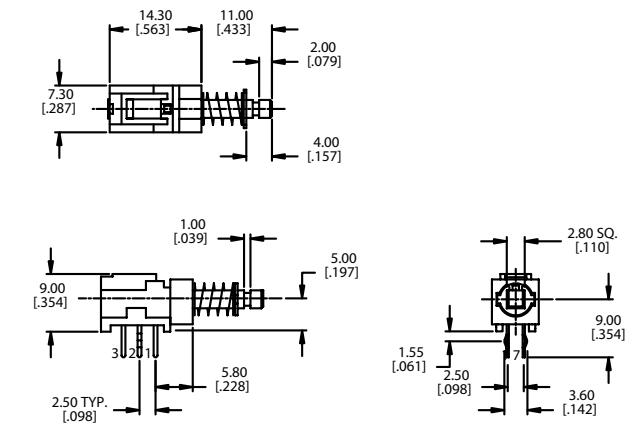
P.C. MOUNTING



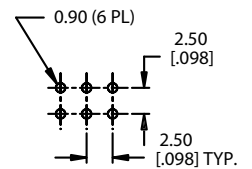
Schematic



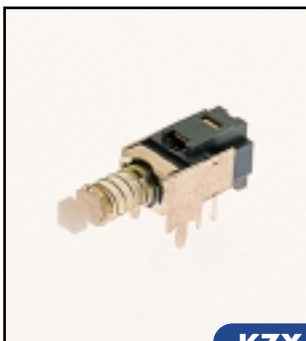
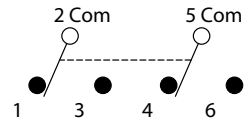
SNP
Snap-in



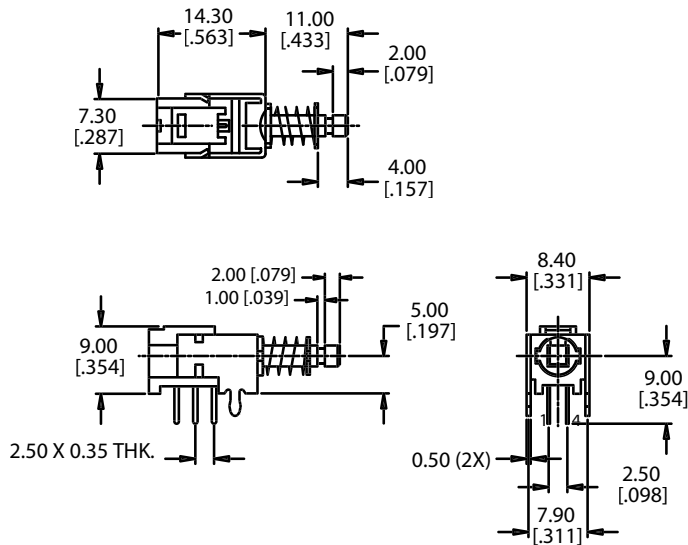
P.C. MOUNTING



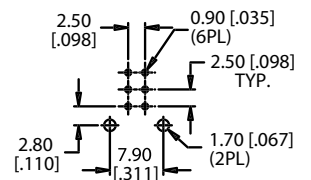
Schematic



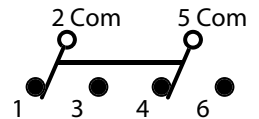
KZX
Mounting bracket



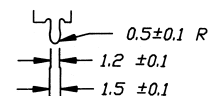
P.C. MOUNTING



Schematic



Bracket Leg



SPECIFICATIONS SUBJECT TO CHANGE WITHOUT NOTICE.

PUSHBUTTON ASSEMBLIES

HOW TO ORDER ASSEMBLIES

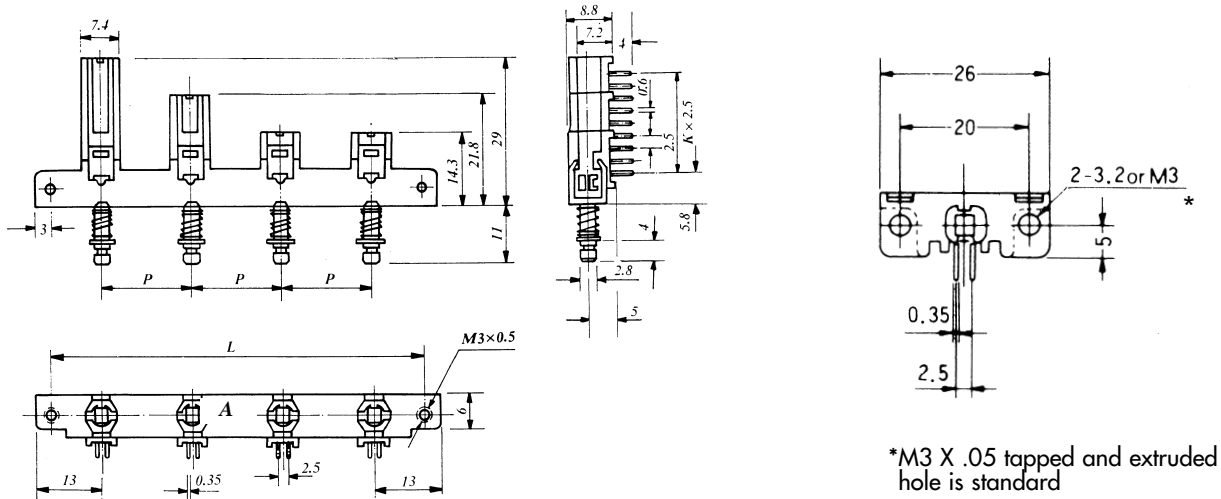
Number of Switches Per Chassis	Series	Chassis Spacing	Cap	Cap Color	Pole	Mechanical Configuration	Timing	Housing/Plunger Material	Exceptions to Part Number By Station
1 2 3 4 5 6 7 8 9 10 11 12	MTH	In mm: (None)= Single Key Chassis 7.5 (.295") 10 (.394") 12.5 (.492") 15 (.591") 17.5 (.689") 20 (.787")	See Cap Section		2U 4U 6U	EE= Latching OA= Momentary GR= Interlocked	N= BBM S= MBB	(None)= UL94HB V= UL94VO	See below for procedure

Exceptions to Part Number:
List By Chassis Station #
Examples: Station4=4UOA
Station3=1D/Red
ORIENTATION: PC pins down, plungers forward-station No. 1 on left.

EXAMPLE

4x → MTH → 15 → (1D/Red) → 2U → OA → S → V

CHASSIS & ASSEMBLY



SPECIFICATIONS SUBJECT TO CHANGE WITHOUT NOTICE.

CHASSIS DIMENSIONS

Number of Stations	'A' Dimension											
	2	3	4	5	6	7	8	9	10	11	12	
'P' Dim. (Pitch)	7.5mm	27.5	35	42.5	50	57.5	65	72.5	80	87.5	95	102.5
	10mm	30	40	50	60	70	80	90	100	110	120	130
	12.5mm	32.5	45	57.5	70	82.5	95	107.5	120	132.5	145	157.5
	15mm	35	50	65	80	95	110	125	140	155	170	185
	17.5mm	37.5	55	72.5	90	107.5	125	142.5	160	177.5		
20mm	40	60	80	100	120	140	160	180				