

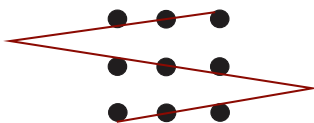
# MS27488

## SEALING PLUGS



Step'n Components specializes in the manufacturing and distribution of metal and composite components for the connector industry. We deliver precision components on time and to specification. The management team at Step'n Components has more than 50 years of innovation and engineering experience in the composite marketplace. Our experienced team delivers a high level of customer care to clients of all sizes.

Step'n Components' products are engineered to withstand demanding physical and environmental requirements. Our products offer exceptional performance in applications requiring mechanical endurance and they consistently achieve the goals of minimum weight, maximum durability and best value for our customers.

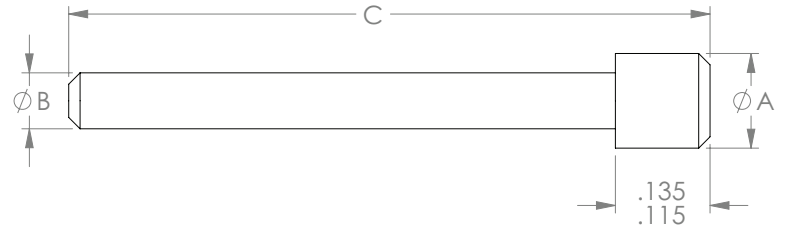
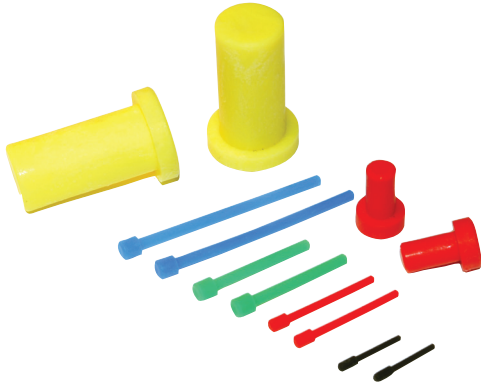


***Step'n Components***

17832 Gothard Street | Huntington Beach, CA 92647 | Phone: 714-362-3713  
Fax: 714-362-3714 | Email: [sales@stepnco.com](mailto:sales@stepnco.com) | [www.stepnco.com](http://www.stepnco.com)



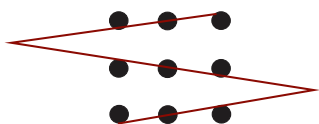
# MS27488 SEALING PLUGS



Revision N	Color	A Dia. Min/Max	B Dia. Min/Max	C Dia. Min/Max
MS27488-22-2	Black	.058/.066	.038/.045	.438/.500
MS27488-20-2	Red	.080/.090	.048/.058	.755/.805
MS27488-16-3	Blue	.120/.130	.069/.079	1.422/1.472
MS27488-16-2	Green	.120/.130	.069/.079	.822/.872
MS27488-12-3	Yellow	.160/.170	.115/.125	1.391/1.441
MS27488-12-2	Orange	.160/.170	.115/.125	.791/.841
MS27488-8-3	Red	.305/.315	.165/.175	1.139/1.189
MS27488-4-3	Blue	.404/.414	.273/.283	1.139/1.189
MS27488-0-3	Yellow	.596/.606	.416/.431	1.021/1.071

Revision M	Color	A Dia. Min/Max	B Dia. Min/Max	C Dia. Min/Max
MS27488-22-1	Black	.058/.066	.038/.045	.746/.796
MS27488-20-1	Red	.080/.090	.048/.058	.755/.805
MS27488-16-1	Blue	.120/.130	.069/.079	1.422/1.472
MS27488-12-1	Yellow	.160/.170	.115/.125	1.391/1.441
MS27488-8-1	Red	.305/.315	.165/.175	1.139/1.189
MS27488-4-1	Blue	.404/.414	.273/.283	1.139/1.189
MS27488-0-1	Yellow	.596/.606	.416/.431	1.021/1.071

Revision L	Color	A Dia. Min/Max	B Dia. Min/Max	C Dia. Min/Max
MS27488-22	Black	.058/.068	.035/.045	.438/.500
MS27488-20	Red	.085/.100	.045/.065	.544/.584
MS27488-16	Blue	.128/.138	.073/.093	.544/.584
MS27488-12	Yellow	.166/.176	.111/.131	.544/.584
MS27488-8	Red	.310/.320	.175/.195	.460/.480
MS27488-4	Blue	.410/.420	.300/.320	.460/.480
MS27488-0	Yellow	.600/.610	.430/.450	.990/1.010



**Step'n Components**

17832 Gothard Street | Huntington Beach, CA 92647 | Phone: 714-362-3713  
 Fax: 714-362-3714 | Email: sales@stepnco.com | www.stepnco.com