

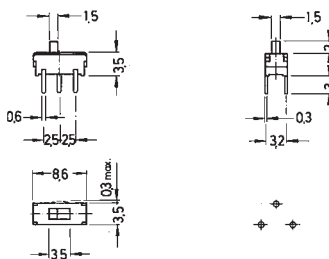
# Microminiature Slide Switches

## Specifications:

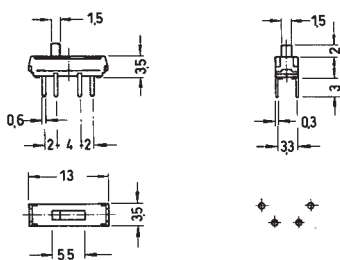
Contact rating:	12 V DC, 200 mA
Contact resistance:	< 50 mΩ
Insulation resistance:	> 100 MΩ at 500 V DC
Dielectric strength:	500 V, 50 Hz for the duration of 1 minute
Operating temperature:	- 10° to + 60° C
Mechanical life:	minimum 5000 operations
Contacts:	phosphor bronze, silver-plated
Terminals:	brass silver-plated
Contact timing:	non-shorting
Soldering conditions:	auto-soldering – max.: 3 sec ± 0,5 sec, 230° C ± 5° C

## Models:      Switching functions

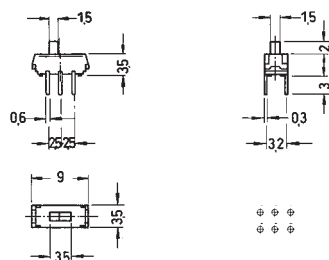
MMP 121      on    on



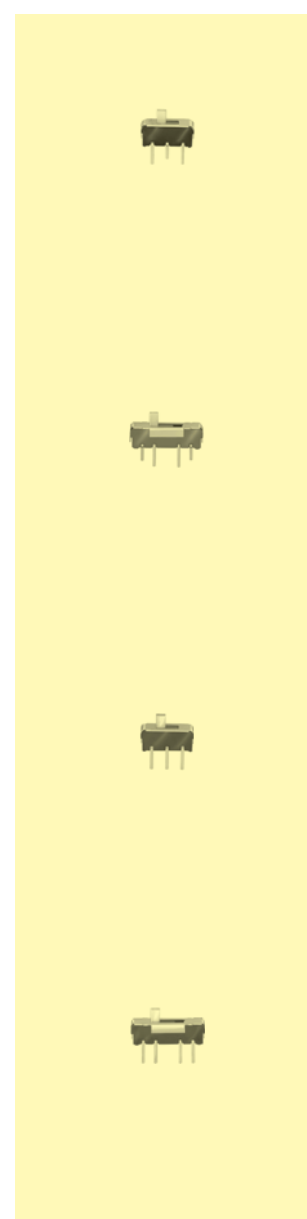
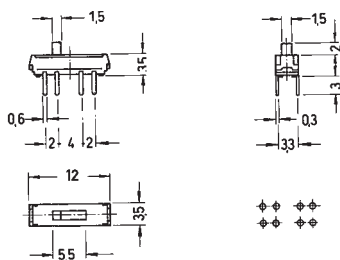
MMP 131      on on on



MMP 221      on    on



MMP 231      on on on

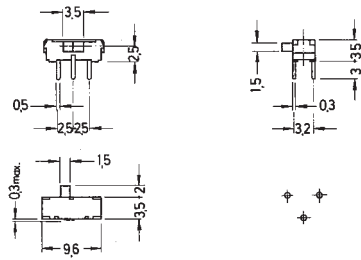




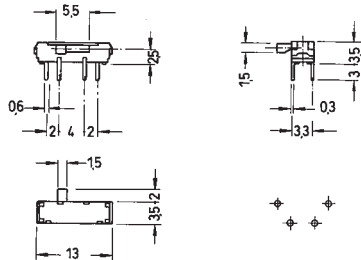
# Microminiature Slide Switches

**Models:**            Switching functions

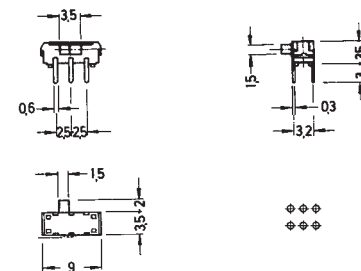
MMP 121 – R    on    on   



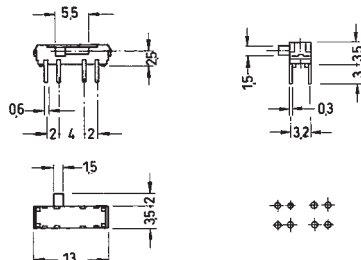
MMP 131 – R    on on on   



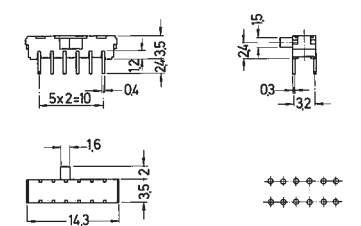
MMP 221 – R    on    on   



MMP 231 – R    on on on   



MMP 421 – R    on    on   



4

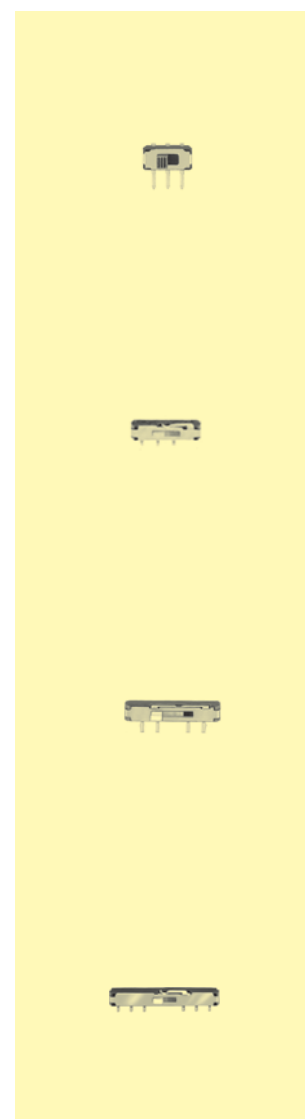
# Microminiature Slide Switches

## Specifications:

Contact rating:	12 V DC, 200 mA
Contact resistance:	< 50 mΩ
Insulation resistance:	> 100 MΩ at 500 V DC
Dielectric strength:	500 V, 50 Hz for the duration of 1 minute
Operating temperature:	- 10° to + 60° C
Mechanical life:	minimum 5000 operations
Contacts:	phosphor bronze, silver-plated
Terminals:	brass, silver-plated
Contact timing:	non-shorting
Slide colour:	white; MMP 122 – R: black
Soldering conditions:	auto-soldering – max.: 3 sec ± 0,5 sec, 230° C ± 5° C

## Models:            Switching functions

MMP 122 – R	on    on				
MMP 124 – R	on    on				
MMP 134 – R	on on on				
MMP 224 – R	on    on				





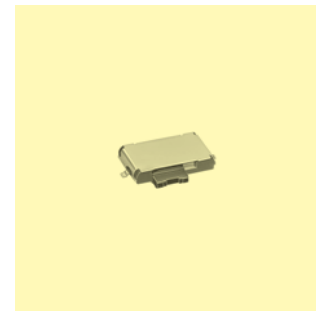
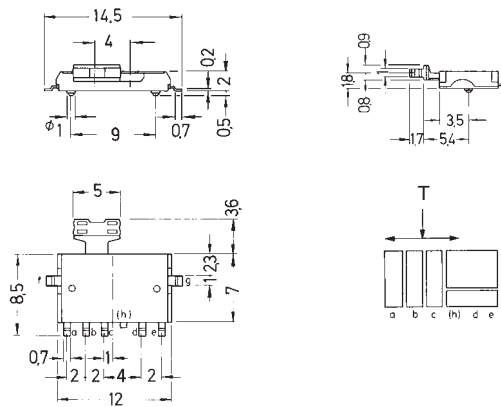
# Microminiature Slide Switches for SMT

## Specifications:

Contact rating:	12 V DC, 200 mA / 4 V DC, 300 mA
Contact resistance:	< 70 mΩ
Insulation resistance:	> 100 MΩ at 100 V DC
Dielectric strength:	500 V, 50 Hz for the duration of 1 minute
Operating temperature:	- 10° to + 60° C
Mechanical life:	minimum 10 000 operations
Contacts:	phosphor bronze, gold-plated
Terminals:	brass, gold-plated
Contact timing:	non-shorting

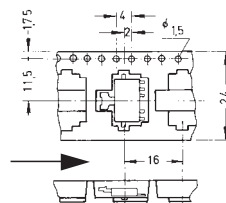
## Models:

MMSP 132      on on on  
with pushbutton function



Packing:

1000 pcs/reel



Ø 330 mm

Soldering conditions:

reflow-soldering – max.: 60 sec, 260° C ± 2° C

Minimum quantity 1 reel

# Microminiature Slide Switches for SMT



## Specifications:

Contact rating:	12 V DC, 200 mA
Contact resistance:	< 50 mΩ
Insulation resistance:	> 100 MΩ at 500 V DC
Dielectric strength:	500 V, 50 Hz for the duration of 1 minute
Operating temperature:	- 10° to + 60° C
Storage temperature:	- 20° to + 70° C
Mechanical life:	minimum 5000 operations
Contacts:	phosphor bronze, silver-plated
Terminals:	brass, silver-plated
Contact timing:	non-shorting
Slide colour:	white

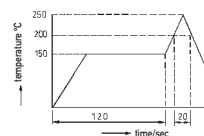
## Models: Switching functions

MMS 124	on on				
MMS 134	on on on				
MMS 224	on on				



Soldering conditions: reflow-soldering – max.: 20 sec, 200° C  
peak temperature: 250° C

Packing: cardboard boxes, on tapes on request





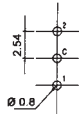
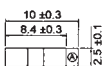
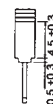
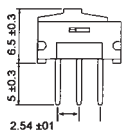
# Microminiature Slide Switches

## Specifications:

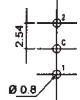
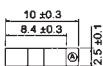
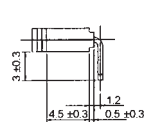
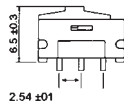
Contact rating:	0,2A, 24 V DC / 0,5A, 12 V DC
Contact resistance:	< 30 mΩ
Insulation resistance:	> 1000 MΩ at 500 V DC
Dielectric strength:	500 V, 50 Hz for the duration of 1 minute
Operating temperature:	- 40° to + 85° C
Mechanical life:	minimum 10 000 operations
Contacts:	phosphor bronze, gold-plated
Terminals:	brass, gold-plated
Contact timing:	non-shorting
Slide colour:	white
Soldering conditions:	auto-soldering – max.: 3 sec ± 0,5 sec, 260° C ± 5° C

## Models:                      Switching functions

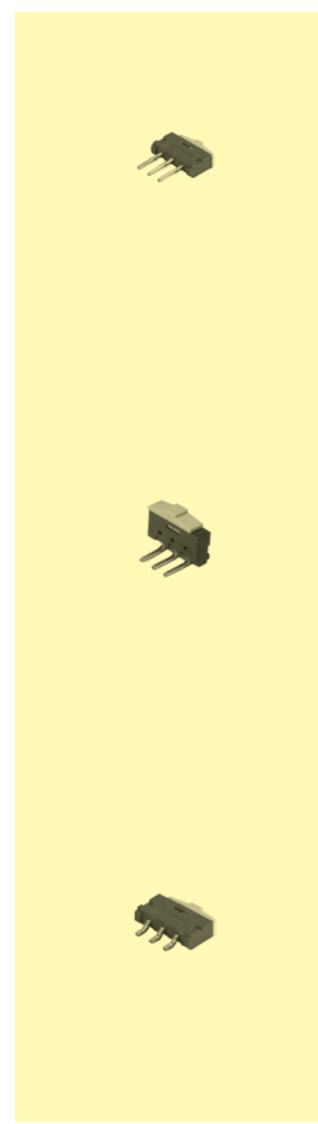
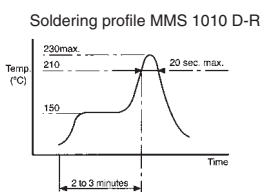
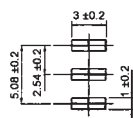
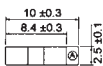
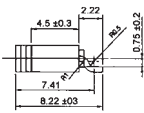
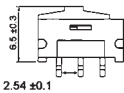
MMP 1010 D            on    on



MMP 1010 D-RA    on    on



MMS 1010 D-R    on    on





# Microminiature Slide Switches

## Specifications:

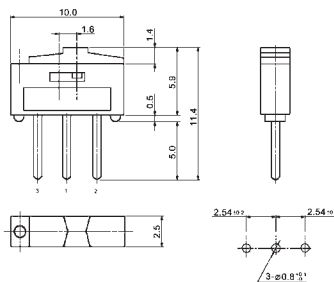
Contact rating:	24 V AC/DC, 0,3A / 12 V AC/DC, 0,5A
Contact resistance:	< 50 mΩ
Insulation resistance:	> 500 MΩ at 500 V DC
Dielectric strength:	500 V for the duration of 1 minute
Operating temperature:	- 25° to + 80° C
Mechanical life:	minimum 10 000 operations
Contacts:	brass, gold-plated
Terminals:	brass, gold-plated
Case:	PA
Soldering conditions:	auto-soldering – max.: 5 sec ± 0,5 sec, 270° C ± 5° C

## Models

## Switching functions

MMP 1010 D – 1

on on



MMP 1010 D-RA – 1

on on

