

# C&K MM Series Miniature Subminiature Precision Snap-acting Switches

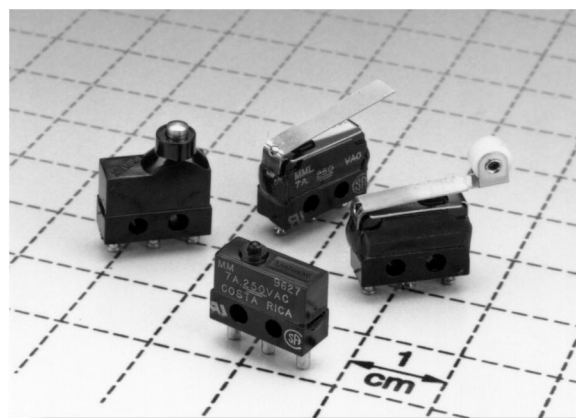


## Features/Benefits

- Low level and power switching
- Long electrical and mechanical life
- Increased overtravel
- Reliable snap-acting mechanism

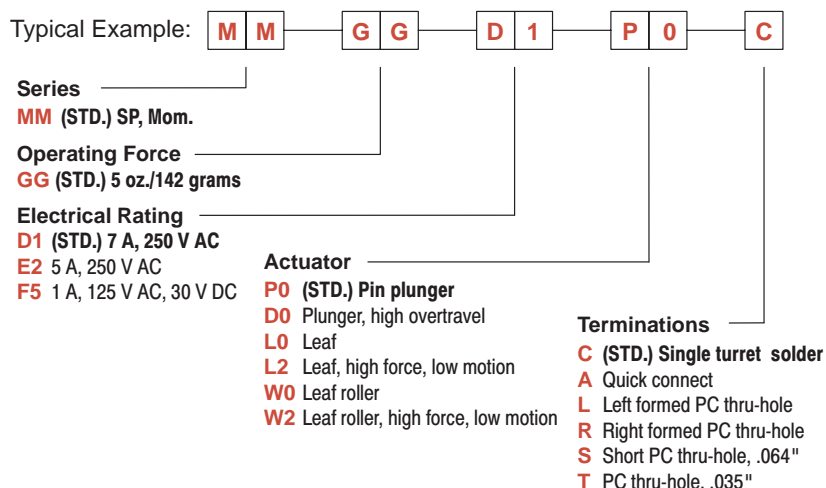
## Typical Applications

- Limited space constraints
- Miniaturized military devices
- Communication devices



## Build-A-Switch

Our easy Build-A-Switch concept allows you to mix and match options to create the switch you need. Below is a complete listing of options shown in catalog. To order, simply select desired option from each category and place in the appropriate box. A switch with standard options is shown on page G-28. Available options are shown and described on pages G-28 and G-29. For additional options not shown in catalog, consult Customer Service Center.



## Specifications

CONTACT RATING: From low level\* to 7 AMPS @ 250 V AC.  
 ELECTRICAL LIFE: 100,000 cycles at full rated load.  
 INSULATION RESISTANCE: 1,000 megohms min.  
 DIELECTRIC STRENGTH: 1,000 V RMS min. @ sea level.  
 OPERATING TEMPERATURE: -67° F to 275° F (-55° C to 135° C).  
 OPERATING FORCE: 5 oz. (142 grams) max. at actuator button.  
 MOUNTING: 2-56 screws, torque 2 in/lbs max.

**NOTE:** Specifications and materials listed above are for switches with standard options. For information on specific and custom switches, consult Customer Service Center.

\* Low Level=conditions where no arcing occurs during switching, i.e., 0.4 VA max. @ 20 V AC or DC max.

## Materials

SWITCH HOUSING: Heat resistant phenolic (UL 94V-0).  
 ACTUATOR BUTTON: Heat resistant phenolic (UL 94V-0).  
 SPRING: Beryllium copper CDA alloy C17200.  
 PIVOT: Brass CDA alloy 260.  
 MOVABLE CONTACTS: Fine silver for ratings greater than 1 AMP @ 125 V AC. 24K gold for 1 AMP @ 125 V AC or less.  
 STATIONARY CONTACTS: Fine silver inlay on copper CDA alloy C10200 for ratings greater than 1 AMP @ 125 V AC. 24K gold on copper CDA alloy C10200 for 1 AMP @ 125 V AC or less.  
 TERMINALS: Copper CDA alloy C18700.

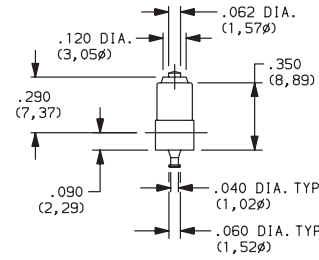
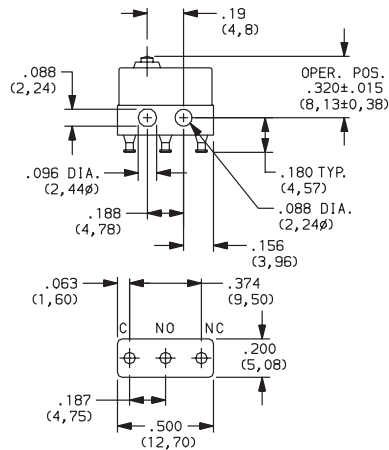


# C&K MM Series Miniature Subminiature Precision Snap-acting Switches

## SWITCH WITH STANDARD OPTIONS



MMGGD1P0C



PART NUMBER	BASIC OPERATING FORCE (OZ./GRAMS)	ELECTRICAL RATING
<b>MMGGD1P0C</b>	5 142	7 AMPS @ 250 V AC.

### SERIES

**MM** (STD.) SPDT MOMENTARY

### OPERATING FORCE

OPTION CODE	BASIC SWITCH OPERATING FORCE
<b>GG</b> (STD.)	5 oz. (142 grams) maximum for basic switch with pin plunger actuator ('P0' actuator option).

NOTE: Operating force varies with actuator option, see ACTUATOR option section.

### ELECTRICAL RATING

OPTION CODE	CONTACT MATERIAL		ELECTRICAL RATING
	MOVABLE CONTACT	STATIONARY CONTACT	
<b>D1</b> (STD.)	Fine silver.	Fine silver inlay on copper CDA alloy C10200.	7 AMPS @ 250 V AC.
<b>E2</b>			5 AMPS @ 250 V AC.
<b>F5</b>	24K Gold.	24K Gold on copper CDA alloy C10200.	From low level* to 1 AMP @ 125 V AC, 30 V DC.

All models with all options.

Consult Customer Service Center for availability and delivery of nonstandard ratings.

\* Low Level=conditions where no arcing occurs during switching, i.e., 0.4 VA max. @ 20 V AC or DC max.

### ACTUATOR

OPTION CODE	FIG.	DIM. A	DIM. B	DIM. C
<b>P0</b> (STD.)	3	.19 (4,8)	.320 ± .015 (8,13 ± 0,38)	—
<b>D0</b>	1	.19 (4,8)	.475 ± .031 (12,07 ± 0,79)	—
<b>L0</b>	2	.34 (8,6)	.330 ± .015 (8,38 ± 0,38)	—
<b>L2</b>	5	.53 (13,5)	.330 ± .015 (8,38 ± 0,38)	—
<b>W0</b>	4	.27 (6,9)	.532 ± .025 (13,51 ± 0,64)	.188 dia. (4,78)
<b>W2</b>	6	.46 (11,7)	.532 ± .025 (13,51 ± 0,64)	.188 dia. (4,78)

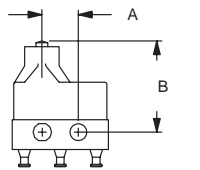


FIG. 1  
Plunger

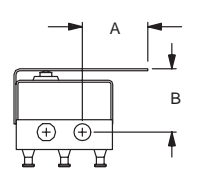


FIG. 2  
Leaf

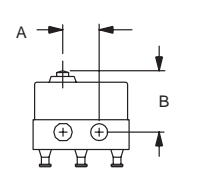


FIG. 3  
Pin Plunger

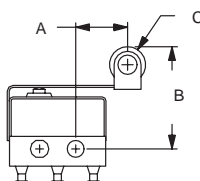


FIG. 4  
Leaf Roller

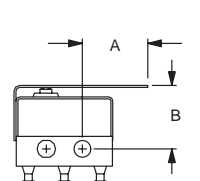


FIG. 5  
Leaf

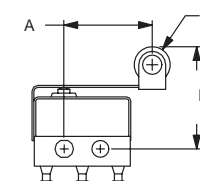


FIG. 6  
Leaf Roller

Snap-acting



# C&K MM Series Miniature Subminiature Precision Snap-acting Switches

ACTUATOR 

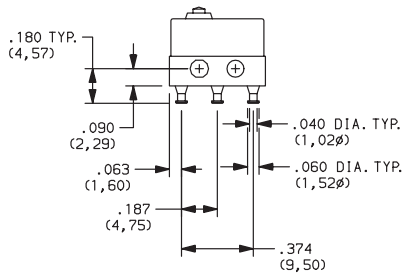
## SWITCH CHARACTERISTICS

OPTION CODE	MAXIMUM OPERATING FORCE (OZ./GRAMS)	MINIMUM RELEASE FORCE (OZ./GRAMS)	MAXIMUM DIFFERENTIAL TRAVEL	MAXIMUM PRETRAVEL	MINIMUM OVERTRAVEL
D0	5 142	.7 20	.004 (0,10)	.030 (0,76)	.040 (1,02)
L0	4 115	.7 20	.025 (0,64)	.090 (2,29)	.045 (1,14)
L2	6 170	.7 20	.012 (0,30)	.075 (1,90)	.015 (0,38)
P0	5 142	1 28	.002 (0,05)	.020 (0,51)	.004 (0,10)
W0	4 115	.7 20	.025 (0,64)	.090 (2,29)	.045 (1,14)
W2	6 170	.7 20	.012 (0,30)	.075 (1,90)	.015 (0,38)

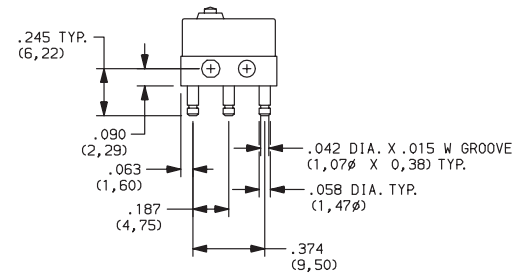
NOTE: For basic switch operating forces, see page G-28.

TERMINATIONS 

### C (STD.) SINGLE TURRET SOLDER

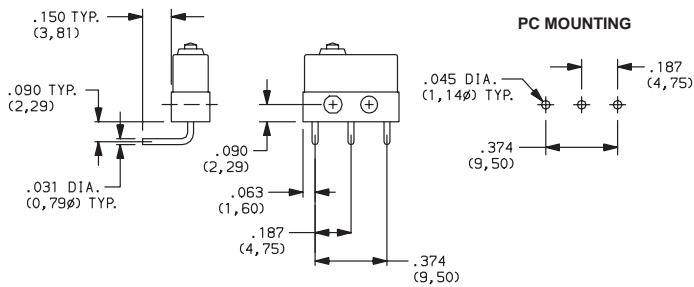


### A .058" DIAMETER QUICK CONNECT

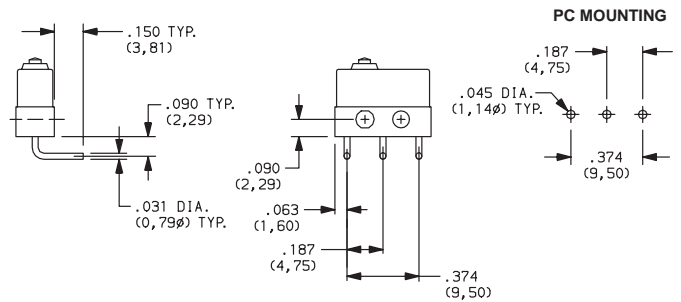


NOTE: Use Amp Quick Connect Part No. 60789-1.

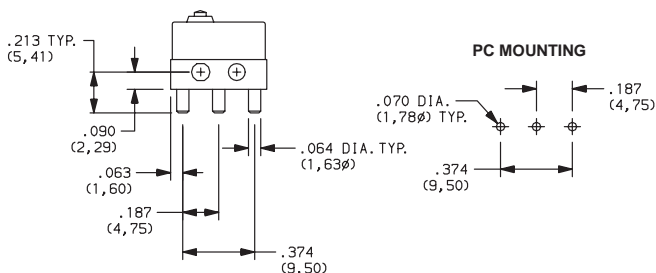
### L LEFT FORMED PC THRU-HOLE



### R RIGHT FORMED PC THRU-HOLE



### S SHORT PC THRU-HOLE, .064"



### T PC THRU-HOLE, .035"

