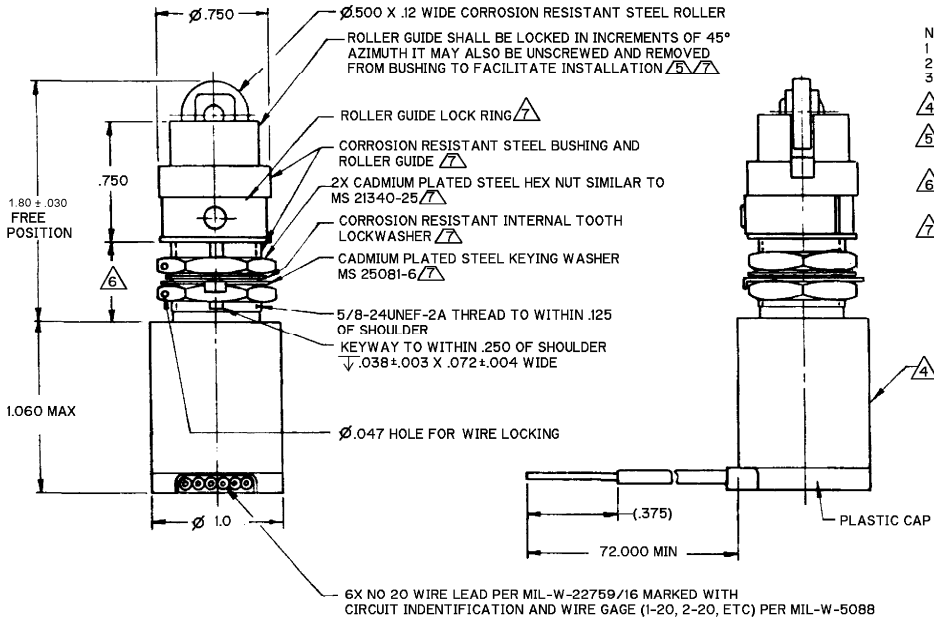
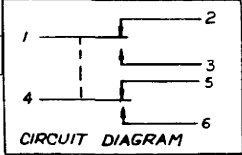


MICRO SWITCH
a Honeywell Division

SWITCH - ENCLOSED

CATALOG LISTING
ML-1172

FED. WTS. CODE 81829



NOTES

- 1 - CORROSION RESISTANT STEEL ENCLOSURE
- 2 - SWITCH SEALED PER MIL-PRF-8805, SYMBOL 4
- 3 - COINCIDENCE OF OPERATING AND RELEASING POINTS: .010 OF PLUNGER TRAVEL
- 4 - PRINT CIRCUIT DIAGRAM, CATALOG LISTING, AND DATE CODE ON NAMEPLATE
- 5 - TO ADJUST ROLLER GUIDE: REMOVE LOCK RING, SCREW GUIDE DOWN AS FAR AS POSSIBLE, THEN UNSCREW GUIDE TO THE DESIRED DIRECTION IN 45° INCREMENTS, THEN REPLACE THE LOCK RING
- 6 - ROLLER CAN BE ADJUSTED TO EACH POSSIBLE DIRECTION WITH A ROLLER GUIDE LOCATION OF .657 ± .030 AND STILL HAVE .250 MINIMUM OVERTRAVEL
- 7 - HARDWARE MAY BE PACKAGED UNASSEMBLED PER MIL-PRF-8805

ANSI Y14.5M-1982 APPLIES

THIS DRAWING COVERS A PROPRIETARY ITEM AND IS THE PROPERTY OF MICRO SWITCH, A DIVISION OF HONEYWELL. THIS DRAWING IS NOT TO BE COPIED OR USED WITHOUT THE APPROVAL OF MICRO SWITCH.

THIRD ANGLE PROJECTION



SCALE: NONE

DO NOT SCALE PRINT

UNLESS OTHERWISE SPECIFIED TOLERANCES ARE

ONE PLACE (.01) ±.030

TWO PLACE (.00) ±.015

THREE PLACE (.000) ±.005

ANGLES ±

WEIGHT

CHARACTERISTICS	
OPERATING FORCE	6 - 12 LBS
FULL OVERTRAVEL FORCE	30 LBS MAX
RELEASE FORCE	4 LBS MIN
PRETRAVEL	.040 MAX
DIFFERENTIAL TRAVEL	.020 MAX
OVERTRAVEL	250 MIN

ELECTRICAL DATA	
CONTACT ARRANGEMENT 2X S P D T	
LOAD	SEA LEVEL 50,000 FT
RESISTIVE	4 4
INDUCTIVE	2 2
MOTOR	4

DO NOT SCALE PRINT	
28 VDC	
ONE PLACE (.01) ±.030	
TWO PLACE (.00) ±.015	
THREE PLACE (.000) ±.005	
ANGLES ±	
WEIGHT	

ML-1172
 CATALOG LISTING
4 OF 1
 RELEASE NO. PR-24161
 05AUG08
 CMH
 21 DEC 05
 VA
 28 SEP 99
 RASTER
 J J A