



# MKS-L DIES CONSTRUCTION SHEET

# JST

Terminal/Contact Model No.	SEH-001T-P0.6	Die set Model No.	SEH-001-06
		Applicator Model No.	MKS-L, MKS-LS
		Crimp shape (wire)	N-1.4
		Crimp shape (ins)	N-1.8

Clearance between Crimper (B) and Shear blade 0.1

Description	No.	Description	No.
Crimper (A)	63821	Crimper anvil (A)	75165
Crimper (B)	64760	Crimper anvil (B)	76830
Spacer (A)	65120		
Spacer (B)			
Spacer (C)	65011		
Punch	68270	Spacer	77400
Die holder	67360	Shear blade	74240
Spring	87100	Shear blade supporter	73030
Wire block	387	Shear blade base	78010
Insulation block	328	Shear blade spring	87010
		Feed finger	86180
		Feed finger holder	86040
Guide plate (L)	81510	Stripper	91450
Guide plate (R)	82500	Stripper bracket	92290
Feed plate	84310	Stripper pin	
Pressure plate	83170		
Pressure spring (2pcs)	87001	Scrap cover	95151

### Wire and Crimp height

Wire		Crimp height (mm)	
Type	Size	Wire	Ins
UL1571	#30	0.57~0.62	1.4
UL1007	#28	0.60~0.65	1.5
UL1007	#26	0.65±0.05	1.5
UL1007	#24	0.70±0.05	1.6
UL1007	#22	0.75±0.05	1.7

### Remarks

Dies construction is the same as that for SEH-001T-P0.6L, though crimp heights are different.

Dies construction is the same as that for SCY-001T-P0.8, though applicable wire range is different.

Strip Length: 2.2 ± 0.03

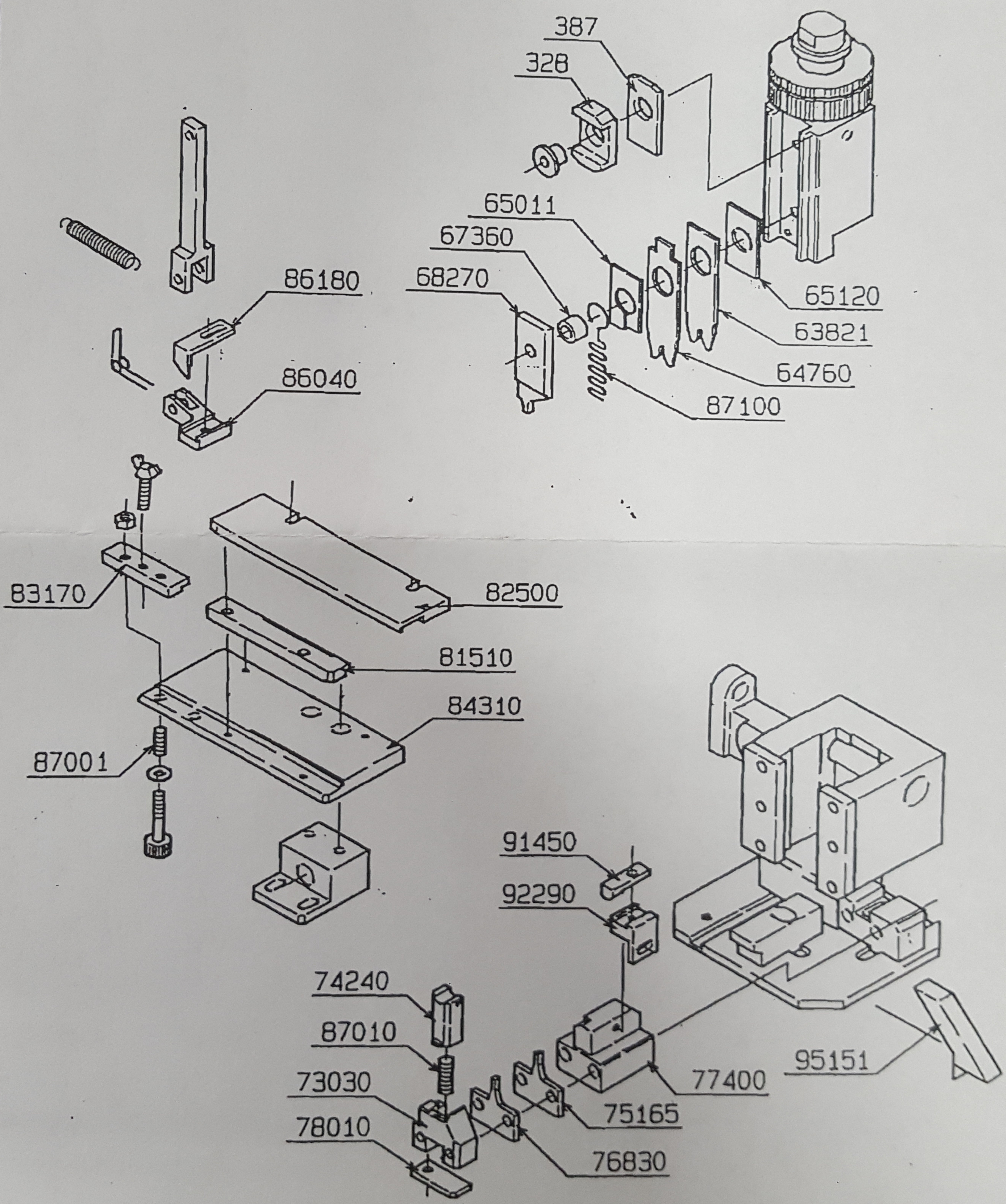
Prepared by	K. Fujii	Issue date	Apr 01, 1996
Checked by	M. Kashi	No.	

**JST**

Side-Feeding Applicator  
**MKS-L**  
 Die Set Assembly

Applicable  
 terminal/  
 contact

SEH-001-0.6  
 -0.6L



Date	Drawn by
Dec. 16, 1992	J. Onishi