



MKS-L DIES CONSTRUCTION SHEET

JST

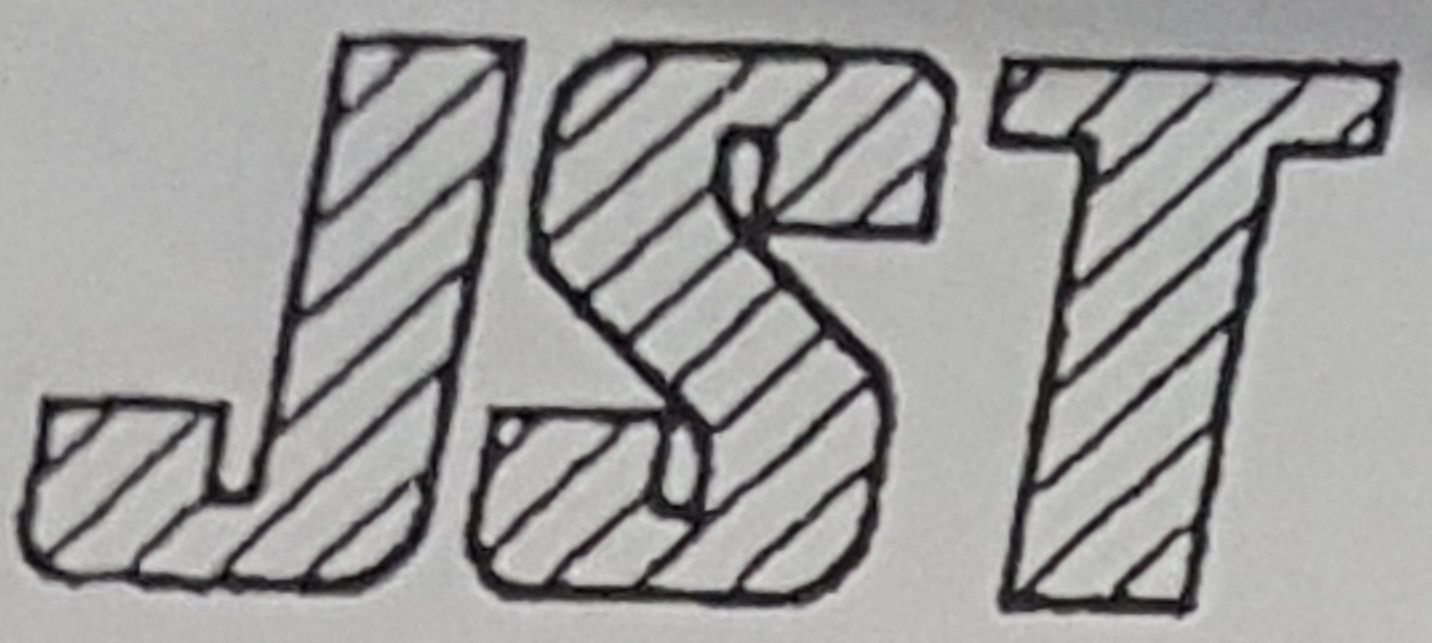
Terminal/Contact Model No.	SSH-003T-PO.2	Die set Model No.	SSH/L-003-02
	SSHL-003T-PO.2	Applicator Model No.	MKS-L-10-3
		Crimp shape (wire)	N-0.7
		Crimp shape (ins)	N-0.7

Clearance between Crimper (B) and Shear blade 0.05

Description		No.	Description		No.
Crimper (A)	<i>MKDP</i>	63248	Crimper anvil (A)		75529
Crimper (B)		64685	Crimper anvil (B)		76776
Spacer (A)		65122			
Spacer (B)					
Spacer (C)					
Punch		68555	Spacer		77376
Die holder		67830	Shear blade		74890
Spring			Shear blade supporter		73430
Wire block		385	Shear blade base		78011
Insulation block		328	Shear blade spring		87230
Wire hold punch		68615			
Wire hold punch spring		87270	Feed finger		86850
			Feed finger holder		86860
Guide plate (L)		81435	Stripper		91355
Guide plate (R)		82895	Stripper bracket		
Feed plate		84075	Stripper pin		
Pressure plate		83170			
Pressure spring(2pcs)		87001	Scrap cover		95600
Cam		99350			

Wire and Crimp height				Remarks MKS-L-10-3 Wire disk: 88330 Insulation disk: 88320 Die plate additional processing: 88560
Wire		Crimp height (mm)		
Type	Size	Wire	Ins	
UL1571	#32	0.38~0.42	0.9	
UL1571	#30	0.40~0.44	0.95	
UL1571	#28	0.43~0.47	1	

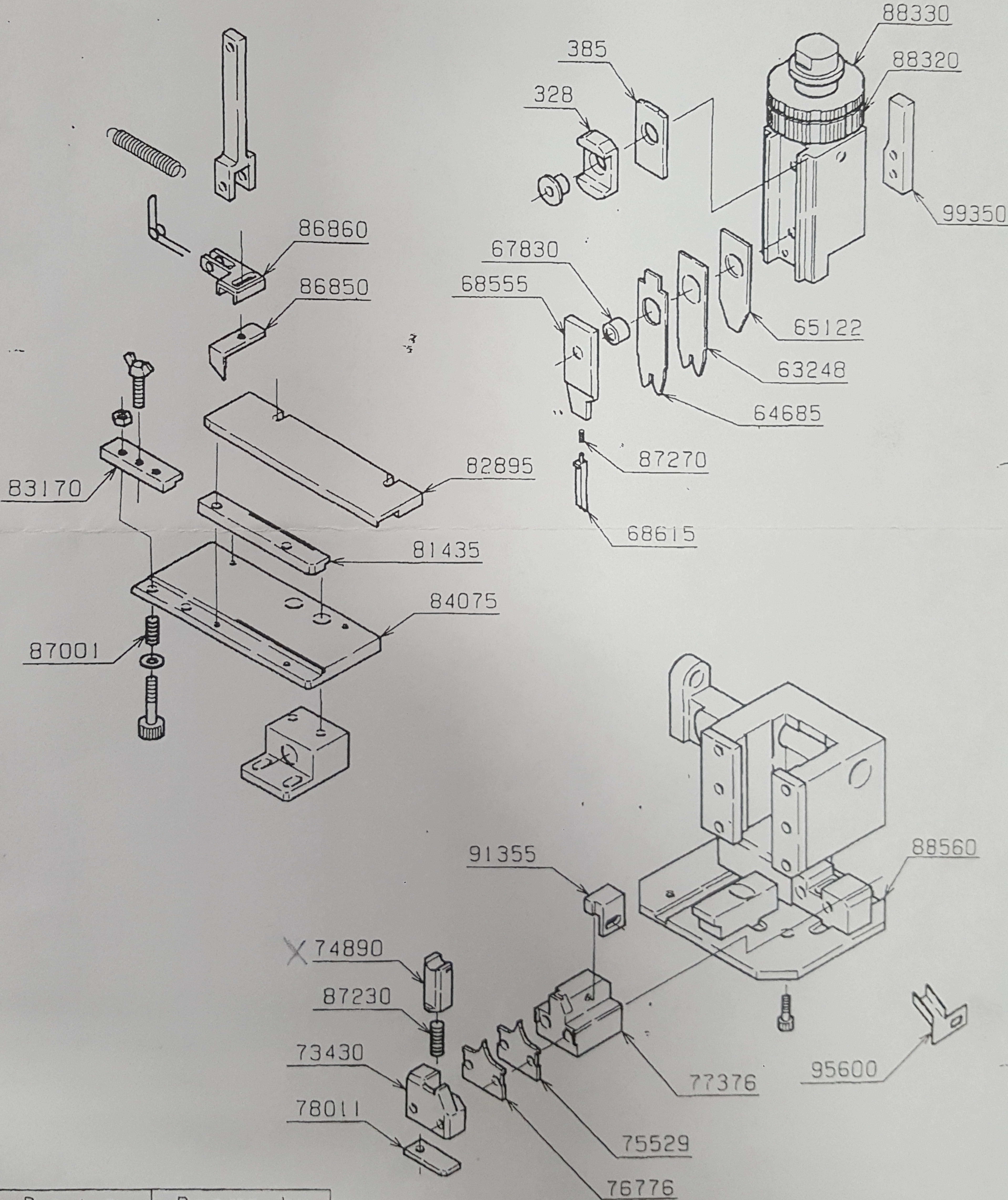
Prepared by	<i>H. Fujii</i>	Issue date	Sep 02, 1997
Checked by	<i>T. H.</i>	No.	CP-MS154



Side-Feeding Applicator
MKS-L-10-3
 Die Set Assembly

Applicable
 terminal/
 contact

SSH/L-003-02
 SSH-002-02



Date	Drawn by
MAR. 24. 99	S. MUNAYUKI

(CP-MS154)
 (CP-MS438)