

MJTP SERIES 6MM THRU-HOLE MTG. TACT SWITCHES

FEATURES

- Numerous single pole-single throw momentary configurations.
- Excellent tactile feed-back (Snap dome).
- Ultra-compact size.
- Long operating life for high reliability.
- Molded-in terminals minimize wicking of flux or solder.

MATERIALS

Case: Thermoplastic, color black.
 Actuator: Thermoplastic, color black unless otherwise specified.
 Cover/Bracket: PET film, tin plated brass or stainless steel.
 Terminals: Silver plated brass.
 Shorting Contact: Phosphor bronze or stainless steel with silver plating.
 L.E.D. rating: Forward voltage- 2.1 V (3.0 V Max.). Cont. fwd. current 20mA max. @ 25°C.

Gold plating available on contacts & terminals - consult factory.

SPECIFICATIONS SUBJECT TO CHANGE WITHOUT NOTICE.

GENERAL SPECIFICATIONS

ELECTRICALS

Contact rating: 50 mA @ 12 VDC
 Insulation resistance: 100 megohms min. (100 VDC)
 Dielectric withstanding voltage: 250 VAC for 1 minute
 Contact resistance: 100 milliohms max. @ 5 VDC, 10 mA
 Electrical life: 100,000 cycles min. (except models MJTP1243 & 1250- 50,000 cycles)
 1,000,000 cycles available - consult factory
 Contact bounce: less than 10 msec.

MECHANICALS, THERMALS, ENVIRONMENTALS

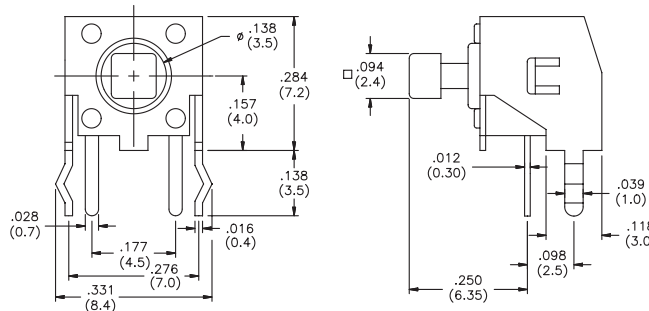
Plunger travel: .010" + .008", - .004" (0,25 +0,2, -0,1 mm)
 Actuation force: 160 grams ±30 grams
 Operating temperature range: -20°C to +70°C
 Storage temperature range: -30°C to +80°C for 96 hours
 Shock resistance: 30G per method 213, MIL-STD-202
 Vibration resistance: passes method 201, MIL-STD-202

SOLDERING (note - non-washable except for models indicated 'process compatible' below).

IR reflow soldering: 240°C max. for 20 seconds max.
 Wave soldering: 255°C max. for 5 seconds max.
 Hand soldering: 320°C max. for 3.5 seconds max. (40 watt iron max.)

MJTP1105T

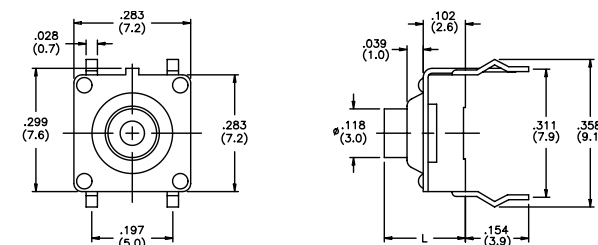
Right angle, grounding



Caps available - see end of section.
Bulk packaged.

MJTP1109

Process compatible, grounding



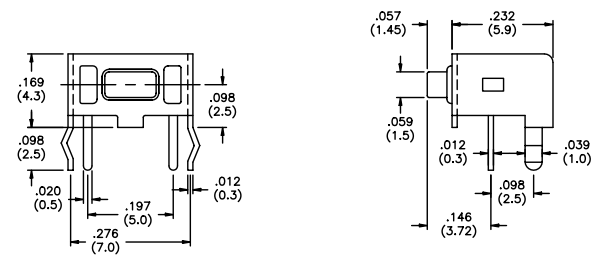
Model No.	Dim. L (In./mm)
MJTP1109	.197 (5.0)
MJTP1109A	.354 (9.0)
MJTP1109B	.512 (13.0)

Bulk packaged.

MJTP1117
Right angle, grounding



New!

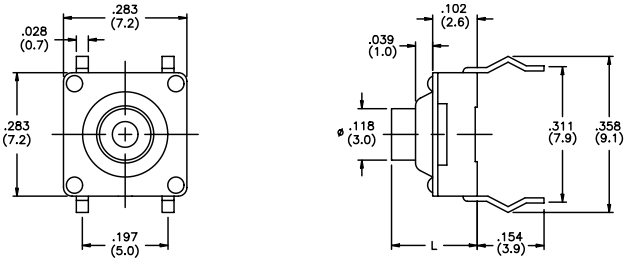


Bulk packaged.

MJTP1119
Process compatible



New!


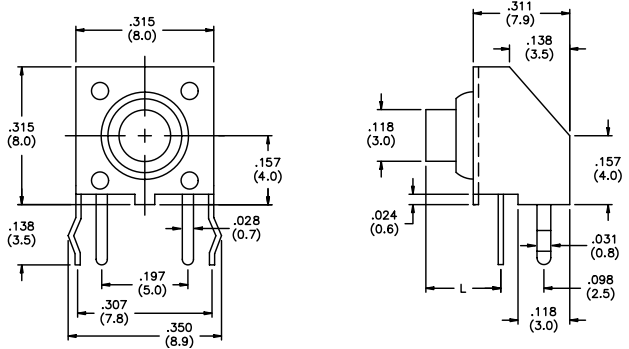


Model No.	Dim. L (in./mm)
MJTP1119	.197 (5.0)
MJTP1119A	.354 (9.0)
MJTP1119B	.512 (13.0)

Bulk packaged.

F


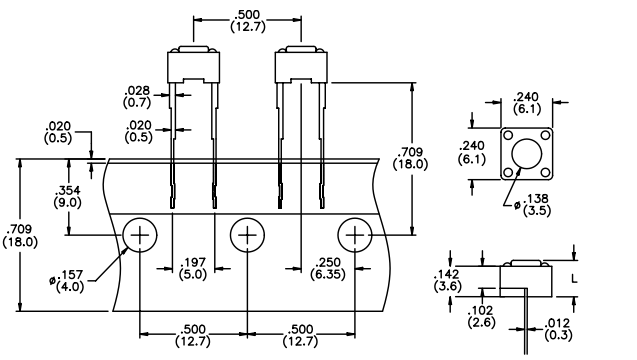
MJTP1129
Right angle, grounding, process compatible

Model No.	Dim. L (in./mm)
MJTP1129	.171 (4.35)
MJTP1129A	.329 (8.35)
MJTP1129B	.486 (12.35)

Bulk packaged.


MJTP1141
Long terminals

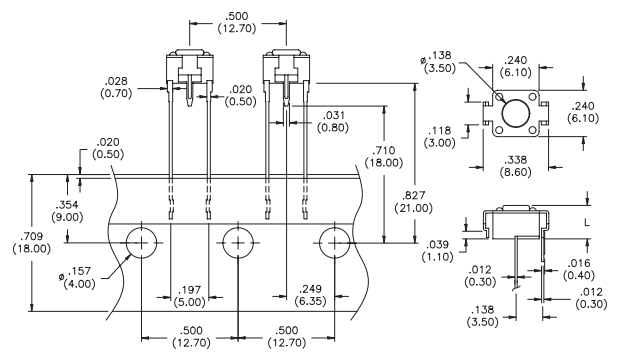
Model No.	Dim. L (in./mm)
MJTP1141	.169 (4.3)
MJTP1141A	.197 (5.0)

Packaged on tape. Note: other models available with this tape packaging - consult factory.

MJTP1144
Long terminals, grounding



New!



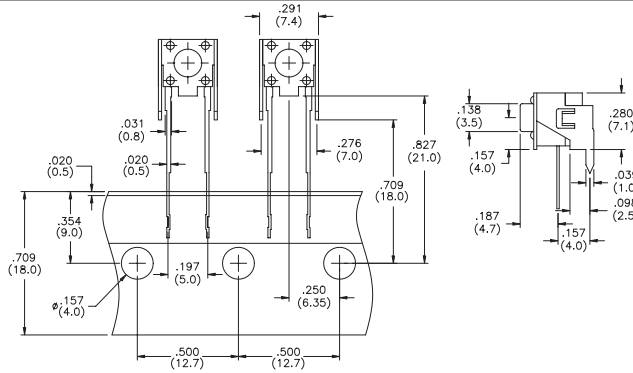
Model No.	Dim. L (in./mm)
MJTP1144	.169 (4.3)
MJTP1144A	.197 (5.00)

Caps available - see end of section. Bulk packaged.

MJTP1145
Right angle, grounding



New!



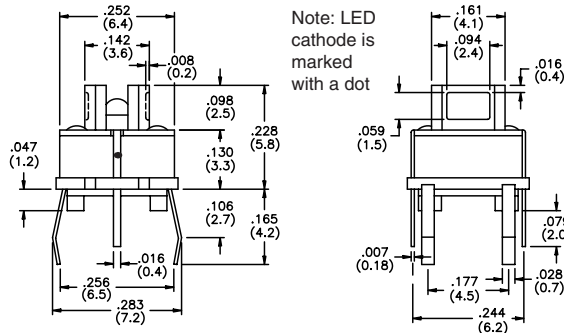
Model No.	Actuator Color
MJTP1145	Black
MJTP1145W	Gray

Bulk packaged.

MJTP1193
With L.E.D.



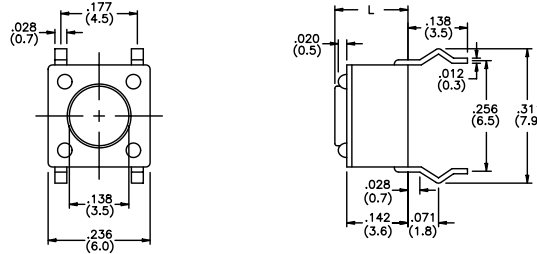
New!



Model No.	L.E.D. Color
MJTP1193	No L.E.D.
MJTP1193B	Red
MJTP1193S	Yellow
MJTP1193C	Green

Caps available with lens - see end of section.
Bulk packaged.

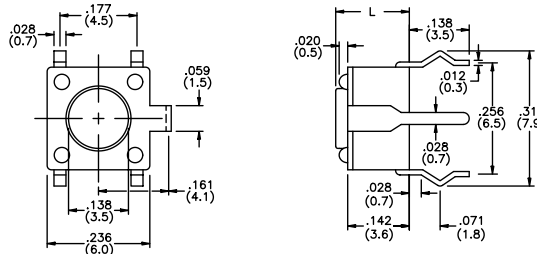
MJTP1230



Model No.	Dim. L (in./mm)
MJTP1230	.170 (4,3)
MJTP1230A	.197 (5,0)
MJTP1230B	.374 (9,5)
MJTP1230C	.315 (8,0)
MJTP1230D	.512 (13,0)
MJTP1230E	.287 (7,3)
MJTP1230F	.335 (8,5)
MJTP1230G	.275 (7,0)

Bulk packaged.

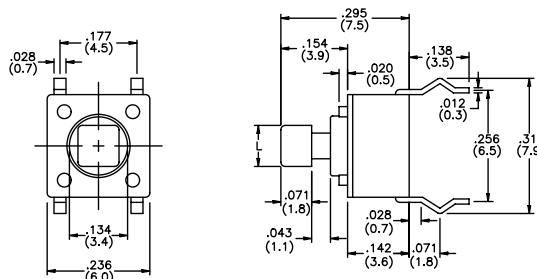
MJTP1232
Grounding



Model No.	Dim. L (in./mm)
MJTP1232	.170 (4,3)
MJTP1232A	.197 (5,0)
MJTP1232B	.374 (9,5)
MJTP1232C	.315 (8,0)
MJTP1232D	.512 (13,0)
MJTP1232E	.287 (7,3)
MJTP1232F	.335 (8,5)
MJTP1232G	.275 (7,0)

Bulk packaged.

MJTP1234



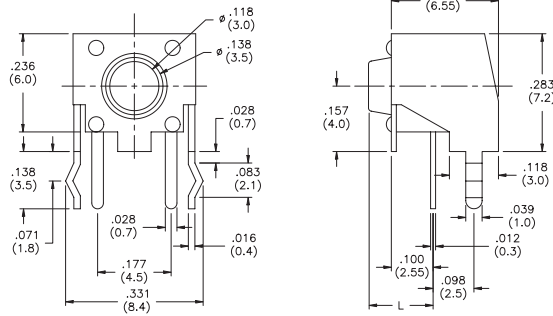
Model No.	Dim. L (in./mm)
MJTP1234	.094 (2,4)
MJTP1234A	.110 (2,8)

Caps available - see end of section.
Bulk packaged.

F

MJTP1236

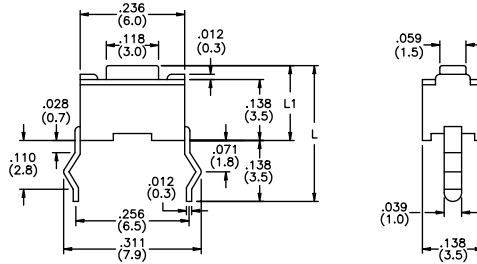
Right angle, grounding



Model No.	Dim. L (in./mm)
MJTP1236	.124 (3,1)
MJTP1236A	.152 (3,9)
MJTP1236B	.329 (8,4)
MJTP1236C	.270 (6,9)
MJTP1236D	.466 (11,9)
MJTP1236E	.244 (6,2)
MJTP1236F	.289 (7,3)
MJTP1236G	.230 (5,8)

Bulk packaged.

MJTP1243 & MJTP1250

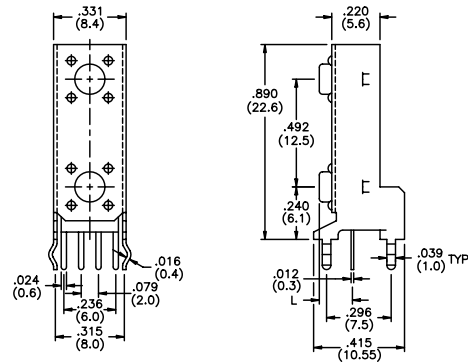


Model No.	Dim. L1 (in./mm)	Dim. L (in./mm)
MJTP1243	.169 (4,3)	.307 (7,8)
MJTP1250	.197 (5,0)	.335 (8,5)

Bulk packaged.

MJTP2205

2 switch vertical gang assembly, black actuators

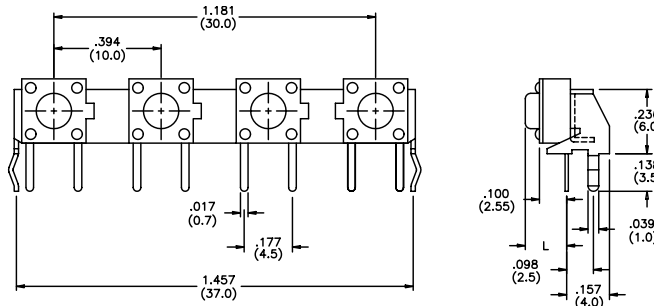


Model No.	Dim. L (in./mm)
MJTP2205	.124 (3,15)
MJTP2205A	.152 (3,85)
MJTP2205B	.329 (8,35)
MJTP2205C	.270 (6,85)
MJTP2205D	.466 (11,85)
MJTP2205E	.242 (6,15)

Bulk packaged.

MJTP4102

4 switch horizontal gang assembly, black actuators

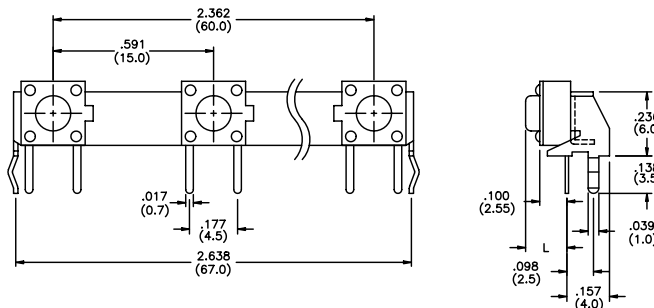


Model No.	Dim. L (in./mm)
MJTP4102	.125 (3,2)
MJTP4102A	.152 (3,85)
MJTP4102B	.329 (8,35)

Bulk packaged.

MJTP5302

5 switch horizontal gang assembly, black actuators



Model No.	Dim. L (in./mm)
MJTP5302	.125 (3,2)
MJTP5302A	.152 (3,85)
MJTP5302B	.329 (8,35)

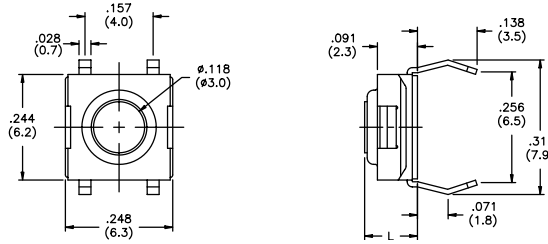
Bulk packaged.

SPECIFICATIONS SUBJECT TO CHANGE WITHOUT NOTICE.

F

SPECIFICATIONS SUBJECT TO CHANGE WITHOUT NOTICE.

MJTPSHW
Process compatible



Model No.	Dim. L (in./mm)
MJTPSHW	.122 (3,1)
MJTPSHWA	.091 (2,3)
MJTPSHWB	.146 (3,7)

Bulk packaged.

CAPS (for MJTP1105T and MJTP1234 only)

CAPS (for MJTP1193 only)

New!

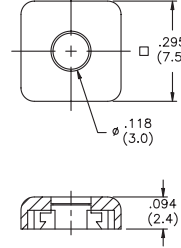
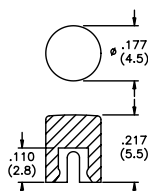
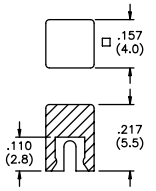
CAP COLORS

MJ61 Square cap

MJ62 Round cap

MJ3 Square cap (w/clear lens in center for LED illumination)

Note - add digit from table to cap part number for color.
Example - **MJ612** indicates square black cap.



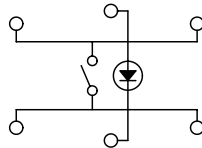
No.	Color
1	blue
2	black
3	green
5	yellow
6	red
7	ivory

SCHEMATICS

- MJTP1109
- MJTP1119
- MJTP1193
- MJTP1230
- MJTP1232

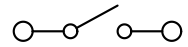
- MJTP1234
- MJTP2205
- MJTP4102
- MJTP5302
- MJTPSHW

Note: LED is for MJTP1193 only.



- MJTP1105
- MJTP1117
- MJTP1129
- MJTP1141
- MJTP1144
- MJTP1145

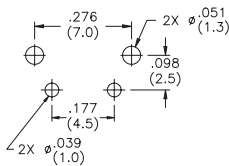
- MJTP1236
- MJTP1243
- MJTP1250
- MJTP2205
- MJTP4102
- MJTP5302



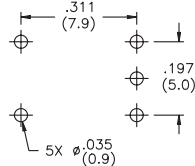
F

PRINTED CIRCUIT BOARD LAYOUTS

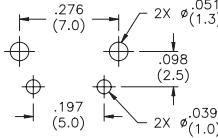
Layout tolerances; Linear: ± .004" (± 0,1MM) Holes: ± .002" (± 0,05MM)



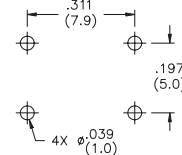
MJTP1105T



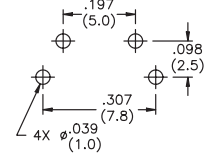
MJTP1109



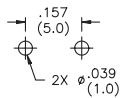
MJTP1117



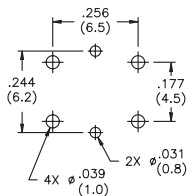
MJTP1119



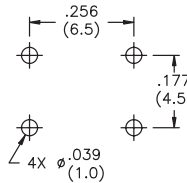
MJTP1129



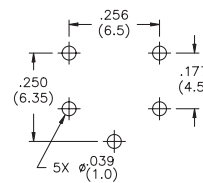
MJTP1141, 44 & 45



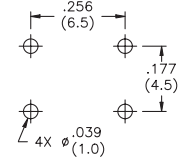
MJTP1193



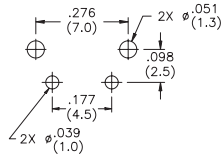
MJTP1230



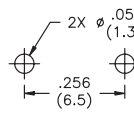
MJTP1232



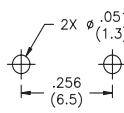
MJTP1234



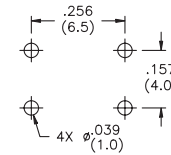
MJTP1236



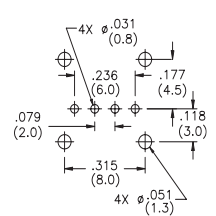
MJTP1243



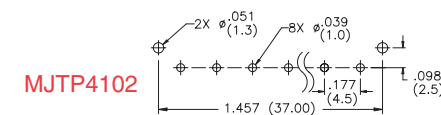
MJTP1250



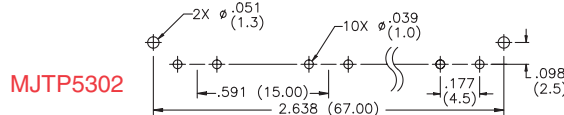
MJTPSHW



MJTP2205



MJTP4102



MJTP5302