

# MJTP SERIES 6MM & 4MM SMD TACT SWITCHES

## FEATURES

- Numerous single pole-single throw momentary configurations.
- Excellent tactile feed-back (Snap dome).
- Ultra-compact size.
- Long operating life for high reliability.
- Molded-in terminals minimize wicking of flux or solder.

## MATERIALS

|                   |   |
|-------------------|---|
| Case:             | High temperature 4/6 nylon.   |
| Actuator:         | High temperature 4/6 nylon.   |
| Cover/Bracket:    | PET film, tin plated brass or stainless steel.                            |
| Terminals:        | Silver plated brass.  |
| Shorting Contact: | Phosphor bronze or stainless steel with silver plating.                   |
| L.E.D. rating:    | Forward voltage- 2.1 V (3.0 V Max.). Cont. fwd. current 20mA max. @ 25°C. |

Gold plating available on contacts & terminals  
- consult factory.

## GENERAL SPECIFICATIONS

### ELECTRICALS

|                                  |  |
|----------------------------------|--|
| Contact rating:                  | 50 mA @ 12 VDC   |
| Insulation resistance:           | 100 megohms min. (100 VDC)   |
| Dielectric withstanding voltage: | 250 VAC for 1 minute   |
| Contact resistance:              | 100 milliohms max. @ 5 VDC, 10 mA                                  |
| Electrical life:                 | 100,000 cycles min. (1,000,000 cycles available - consult factory) |
| Contact bounce:                  | less than 10 msec.   |

### MECHANICALS, THERMALS, ENVIRONMENTALS

|                              |   |
|------------------------------|---|
| Plunger travel:              | .010" + .008", - .004" (0,25 +0,2, -0,1 mm) |
| Actuation force:             | 160 grams ±30 grams                         |
| Operating temperature range: | -20°C to +70°C                              |
| Storage temperature range:   | -30°C to +80°C for 96 hours                 |
| Shock resistance:            | 30G per method 213, MIL-STD-202             |
| Vibration resistance:        | passes method 201, MIL-STD-202              |

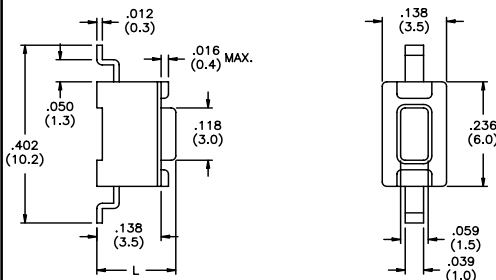
### SOLDERING (note - non-washable except for models indicated as 'process compatible').

|                      |   |
|----------------------|---|
| IR reflow soldering: | 240°C max. for 20 seconds max.                      |
| Wave soldering:      | 255°C max. for 5 seconds max.                       |
| Hand soldering:      | 320°C max. for 3.5 seconds max. (40 watt iron max.) |

SPECIFICATIONS SUBJECT TO CHANGE WITHOUT NOTICE.

M

### US # MJTP1106S

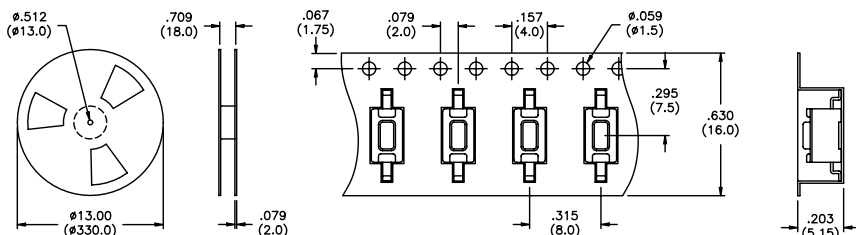


| US Model No.      | Dim. L (in./mm) |
|-------------------|-----------------|
| <b>MJTP1106S</b>  | .169 (4,3)      |
| <b>MJTP1106SA</b> | .197 (5,0)      |

Bulk packaged.

### US # MJTP1106SATR

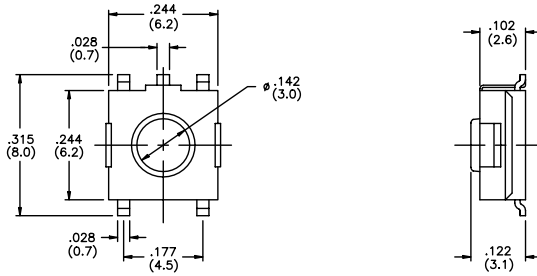
Same as above, except supplied on tape and reel as shown.



Tape & reel packaging - quantity 1800 per reel.

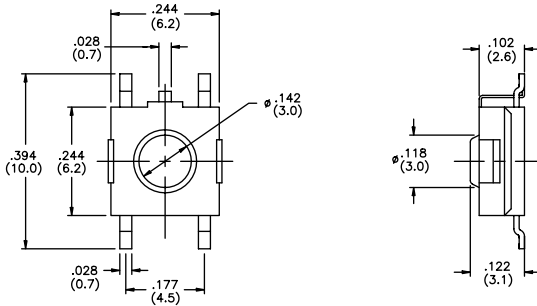
SPECIFICATIONS SUBJECT TO CHANGE WITHOUT NOTICE.

**US # MJTP1122**  
Grounding



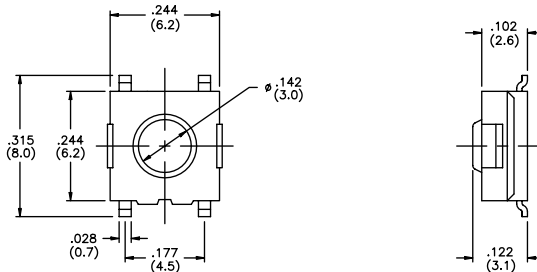
Bulk packaged.

**US # MJTP1122A**  
Grounding



Bulk packaged.

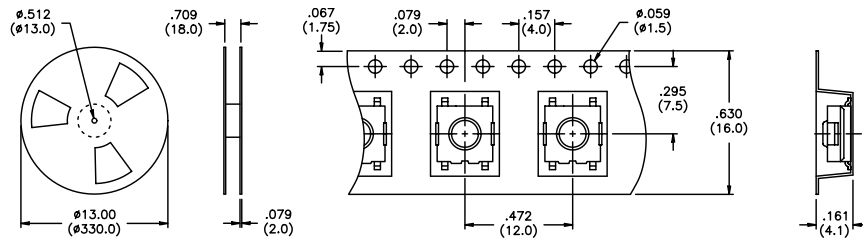
**US # MJTP1122B**  
**EU # PHAP3374**



Bulk packaged.

**US # MJTP1122TR,**  
**MJTP1122BTR &**  
**MJTP3374TR**  
**EU # PHAP3374R**

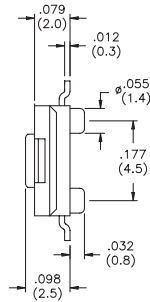
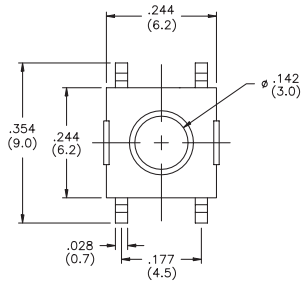
Same as above,  
except supplied  
on tape & reel  
as shown.  
Note -  
MJTP1122A  
not available on  
tape & reel.



Tape & reel packaging - quantity 1500 per reel.



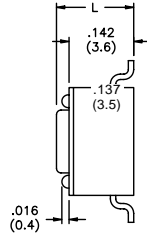
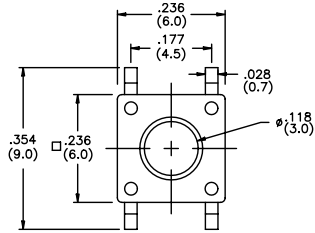
**US # MJTP1125B**



Bulk packaged.

**New!**

**US # MJTP1138  
EU # PHAP3368**



| US Model No.     | Dim. L (in./mm) | EU Model No.     |
|------------------|-----------------|------------------|
| <b>MJTP1138</b>  | .170 (4,3)      | <b>PHAP3368</b>  |
| <b>MJTP1138A</b> | .197 (5,0)      | <b>PHAP3368A</b> |
| <b>MJTP1138B</b> | .374 (9,5)      | <b>PHAP3368B</b> |
| <b>MJTP1138C</b> | .315 (8,0)      | <b>PHAP3368C</b> |
| <b>MJTP1138D</b> | .512 (13,0)     | <b>PHAP3368D</b> |
| <b>MJTP1138E</b> | .287 (7,3)      | <b>PHAP3368E</b> |
| <b>MJTP1138F</b> | .335 (8,5)      | <b>PHAP3368F</b> |
| <b>MJTP1138G</b> | .275 (7,0)      | N/A              |

Models MJTP1138 & MJTP1138A bulk packaged. Other models supplied in tubes (90 pcs.).

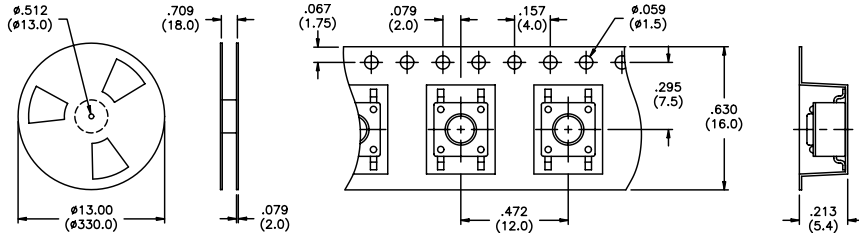
**M**

SPECIFICATIONS SUBJECT TO CHANGE WITHOUT NOTICE.

SPECIFICATIONS SUBJECT TO CHANGE WITHOUT NOTICE.

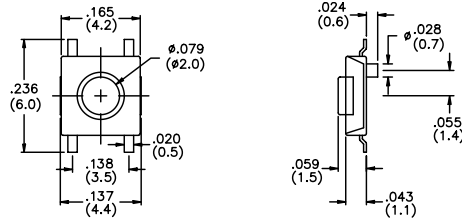
**US # MJTP1138TR & MJTP1138ATR**

Same as above except supplied on tape & reel as shown.



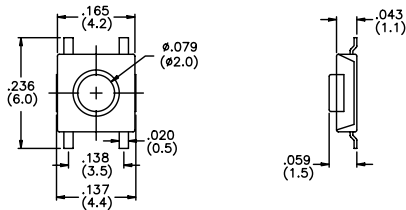
Tape & reel packaging - quantity 1250 per reel.

**US # MJTP1140 EU # PHAP3390**  
4mm x 4mm



Bulk packaged.

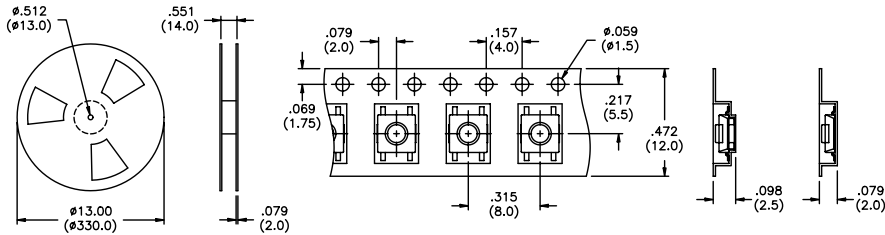
**US # MJTP1140A EU # PHAP3391**



Bulk packaged.

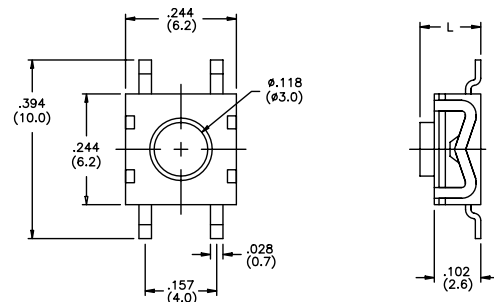
**US # MJTP1140TR & MJTP1140ATR EU # PHAP3390R & PHAP3391R**

Same as above, except supplied on tape & reel as shown.



Tape & reel packaging - quantity 3400 per reel.

**US # MJTP1162 EU # PHAP3371**

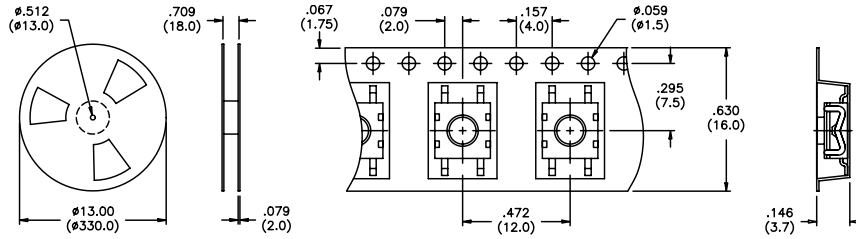


| US Model No. | Dim. L (in./mm) | EU Model No. |
|--------------|-----------------|--------------|
| MJTP1162     | .102 (2,6)      | PHAP3371     |
| MJTP1162A    | .134 (3,4)      | PHAP3371A    |

Bulk packaged.



**US # MJTP1162TR & MJTP1162ATR**  
**EU # PHAP3371R & PHAP3371AR**  
 Same as above except supplied on tape & reel as shown.

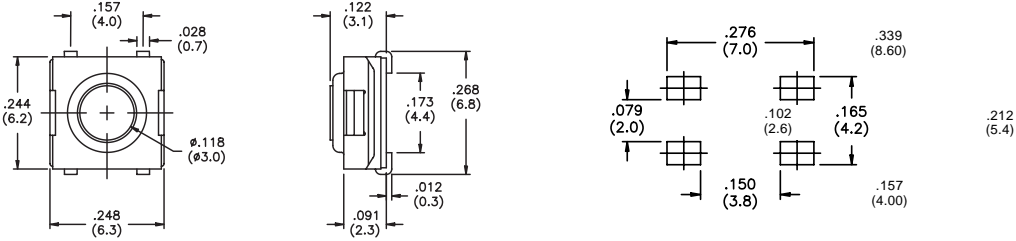


Tape & reel packaging - quantity 1600 per reel.

**US # MJTPSJW66N**  
 Process compatible



New!

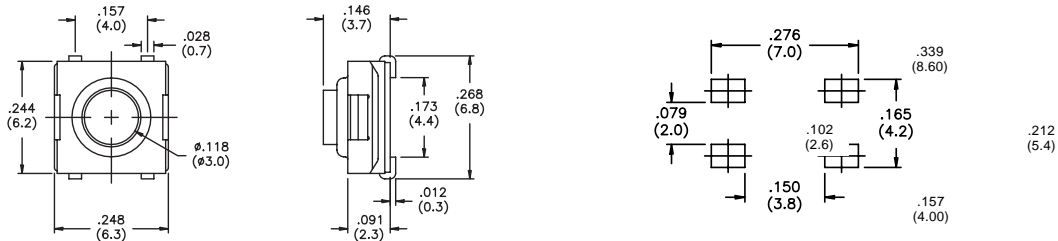


Bulk packaged.

**US # MJTPSJW69N**  
 Process compatible

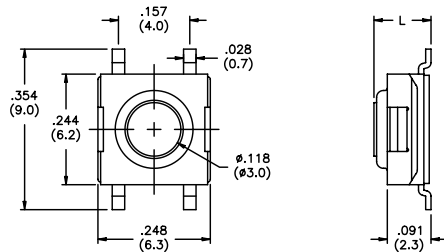


New!



Bulk packaged.

**US # MJTPSMW**  
 Process compatible



| US Model No.    | Dim. L (in./mm) |
|-----------------|-----------------|
| <b>MJTPSMW</b>  | .122 (3,1)      |
| <b>MJTPSMWA</b> | .091 (2,3)      |
| <b>MJTPSMWB</b> | .146 (3,7)      |

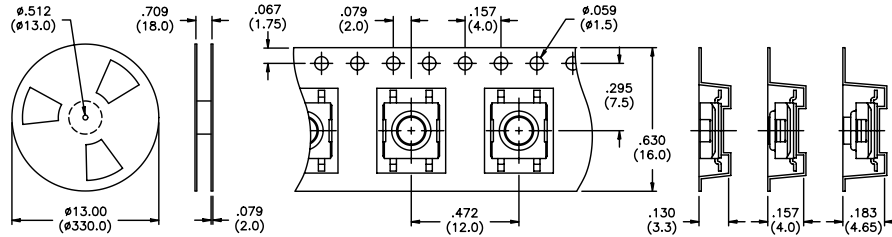
Bulk packaged.

SPECIFICATIONS SUBJECT TO CHANGE WITHOUT NOTICE.

M

**US # MJTPSMWTR & MJTPSMWATR, MJTPSMWBTR**

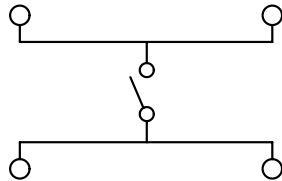
Same as above except supplied on tape & reel as shown.



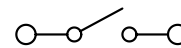
Tape & reel packaging - quantity 'MWTR' & 'MWATR' 2000 per reel, 'MWBTR' 1900 per reel.

**SCHEMATICS**

- MJTP1122
- MJTP1125
- MJTP1137
- MJTP1138
- MJTP1140
- MJTP1162
- MJTPSJW66N
- MJTPSJW69N
- MJTPSMW

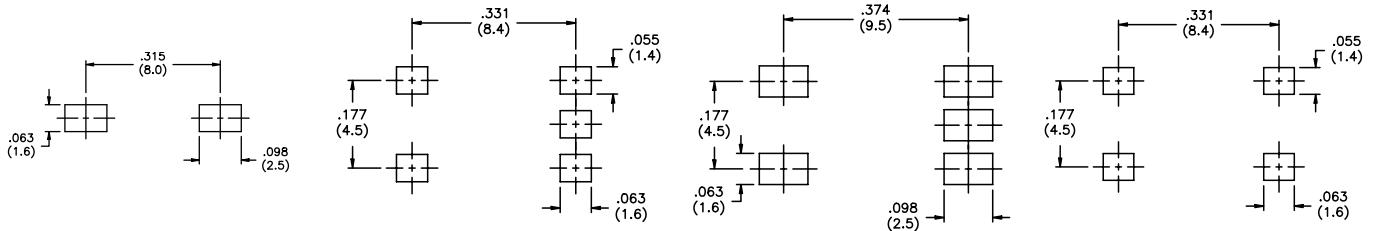


MJTP1106



**PRINTED CIRCUIT BOARD LAYOUTS**

Layout tolerances; Linear: ± .004" ( ± 0,1MM) Holes: ± .002" ( ± 0,05MM) Pads: ± .008" ( ± 0,2MM)

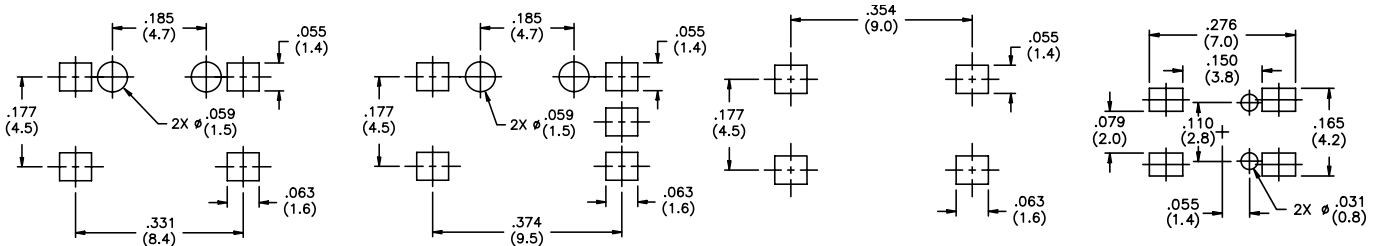


MJTP1106S

MJTP1122

MJTP1122A

MJTP1122B

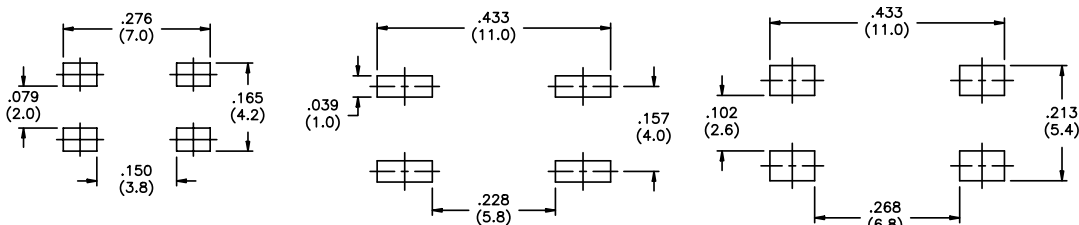


MJTP1137

MJTP1137E

MJTP1138

MJTP1140



MJTP1140A

MJTP1162

MJTPSMW

SPECIFICATIONS SUBJECT TO CHANGE WITHOUT NOTICE.

M