



Order Code

MHRJ — 45SRI — SM — R

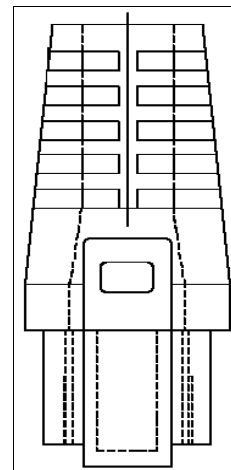
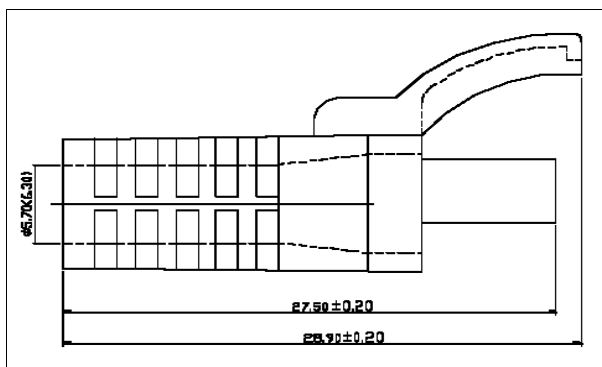
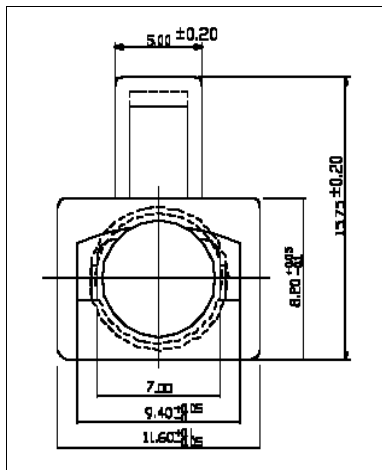
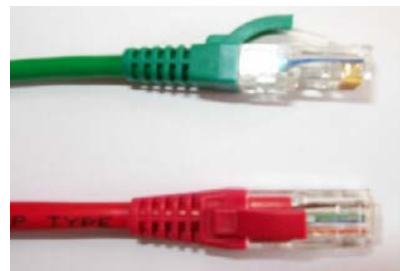
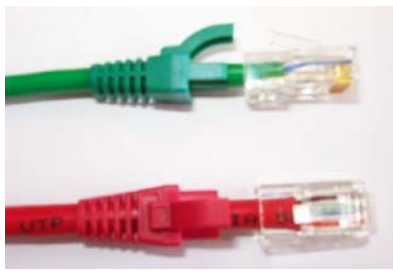
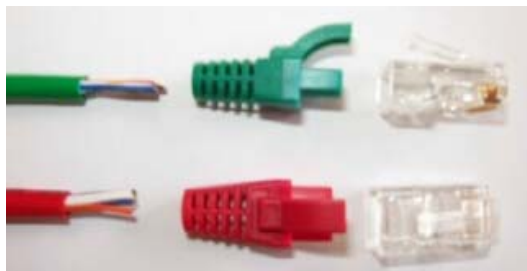
Series _____

Strain Relief Insert _____

Style:
SM=Small, Omit=Standard _____

Colour: _____
 DG = Light Grey, BK = Black, R = Red
 G = Green, BL = Blue, Y = Yellow

- Ideal as a replacement for moulded boots
- Available in 6 standard colours
- Custom colours available on request
- Ideal with MHRJ458P8CR, the MH RJ45 Plug [Page 4](#)
- Standard version accommodates cables with OD to 6 mm
- Small version accommodates cables with OD to 5.5 mm
- Low profile. Insert does not overlap the outside of the plug. Ideal for high density applications.
- The insert locks into place when the plug is assembled with a standard assembly tool.



Related Products:

- MHRJ45SRB—RJ45 Strain Relief Boots
- MHRJ45SRB-SM—RJ45 Strain Relief Boots, Small.
- MHRJ45SRB-RET—RJ45 Strain Relief Boots, Retrofit
- MHRJ45SRB-QR—RJ45 Strain Relief Boots, Quick Release

[Page 1](#)
[Page 1](#)
[Page 1](#)
[Page 4](#)