



- Clips on sheet metal edges for fast mounting of harness with cable ties
- Allows cable tie entry from all four sides for easy harness orientation

Part Number: MCMS25-P-C

Product Family: Metal Clip-On Mounts

Product Line: Specialty Metal

RoHS Compliancy Status: Compliant

Part Description: Metal Clip-On Cable Tie Mount

Material: Zinc Plated Steel

Height (In.): .46

Height (mm): 11.5

Length (In.): .88

Length (mm): 22.4

Width (In.): .56

Width (mm): 14.2

CE Compliant: CT-ACC4 / 10.96

Environment: Indoors/Outdoors

Max. Panel Thickness (In.): .24

Max. Panel Thickness (mm): 6.1

Mounting Method: Clip-On

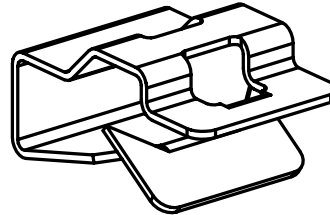
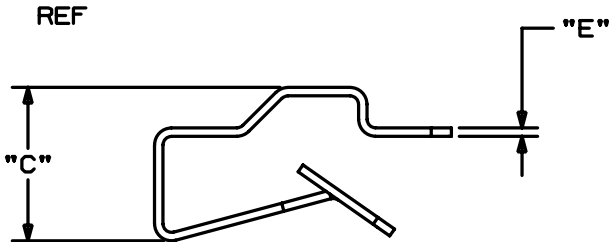
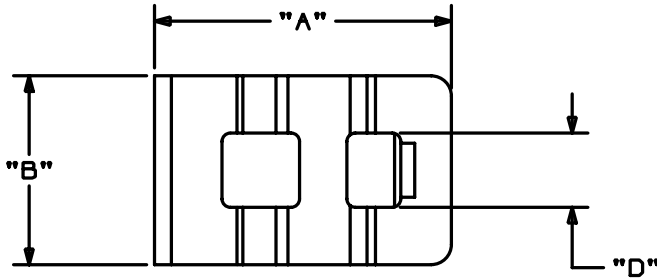
Used With Cable Ties: M, I, S

THIS COPY IS PROVIDED ON A RESTRICTED BASIS AND IS NOT TO BE USED IN ANY WAY DETRIMENTAL TO THE INTERESTS OF PANDUIT CORP.

PANDUIT PART NUMBER*	USED WITH THESE CABLE TIES **	PANEL *** THICKNESS	DIMENSIONS INCHES / [MM]					WEIGHT lbs/100 pcs (g)/100 pcs
			A	B	C (REF)	D	E	
MCMS12-P	M, I, S	0.03 - 0.125 [0.76-3.18]	0.880 [22.35]	0.560 [14.22]	0.310 [7.87]	0.220 [5.59]	0.025 [0.64]	0.59 (268)
MCMS25-P		0.125 - 0.240 [3.18 - 6.09]			0.455 [11.56]			0.728 (330)
MCMS30-P		0.220 - 0.270 [5.58 - 6.86]			0.550 [13.97]			0.798 (362)

NOTES:

- * 1. See current price sheet for part number suffix designation for package size.
- ** 2. Cable tie cross-section code:
M - miniature
I - intermediate
S - standard
- *** 3. Refer to table for panel thickness ranges for each product.
- 4. MATERIAL: AISI 1050 STEEL .025" ±.002 THICK
HEAT TREAT TO RC 46-50 AFTER FORMING
PLATING: ZINC PLATED WITH CLEAR CHROMATE CONVERSION COATING PER ASTM B 633-85 TYPE III CLASS 1 SC#1 MILD.



MCMS25-P (SHOWN)

DIMENSIONS IN BRACKETS ARE METRIC [mm]	
CAD FILENAME/LAYER: G01335BA_PB_MCMS_P_04	
PANDUIT CORP. TINLEY PARK, ILLINOIS	
MCMS__-P METAL CLIP ON MOUNT	
UNLESS OTHERWISE SPECIFIED, DIMENSIONAL TOLERANCES ARE: (.X) ±0.05 (1.3) (.XXX) ±0.010 (0.25) (.XX) ±0.02 (0.5) ANGLES ± 5°	UNLESS OTHERWISE SPECIFIED, ALL DIMENSIONS ARE GIVEN IN INCHES, THIRD ANGLE PROJECTION.
REV 4 2/25/03 JAD	REVISD MATERIAL AND PLATING SPEC. ADDED NOTE 4 MATERIAL DESIGNATION
REV 3 10/31/01 JAD	REVISD ADDING MCMS30-P,PANEL THICKNESS ON MCMS25-P WAS 0.125-0.270.
REV	DATE BY CHK DESCRIPTION ECN - R CUST SUP
DRAWN BY JAD MAT'L: SEE NOTE 4	
DATE 9/23/98	
CR'D	
SCALE FULL	DWG NO. GB1335BA
	DRG SIZE A

REV	DATE	BY	CHK	DESCRIPTION	ECN - R	CUST	SUP
4	2/25/03	JAD		REVISD MATERIAL AND PLATING SPEC. ADDED NOTE 4 MATERIAL DESIGNATION	G01335BA	4	
3	10/31/01	JAD		REVISD ADDING MCMS30-P,PANEL THICKNESS ON MCMS25-P WAS 0.125-0.270.	G01335BA	3	