



ALL RIGHTS RESERVED. NO PORTION OF THIS PUBLICATION, WHETHER IN WHOLE OR IN PART CAN BE REPRODUCED WITHOUT THE EXPRESS WRITTEN CONSENT OF SPC TECHNOLOGY.

SPC-F005.DWG

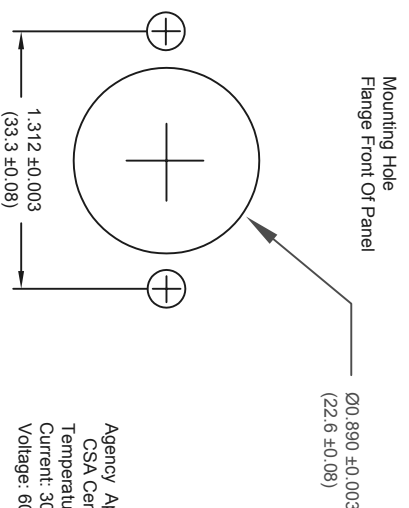
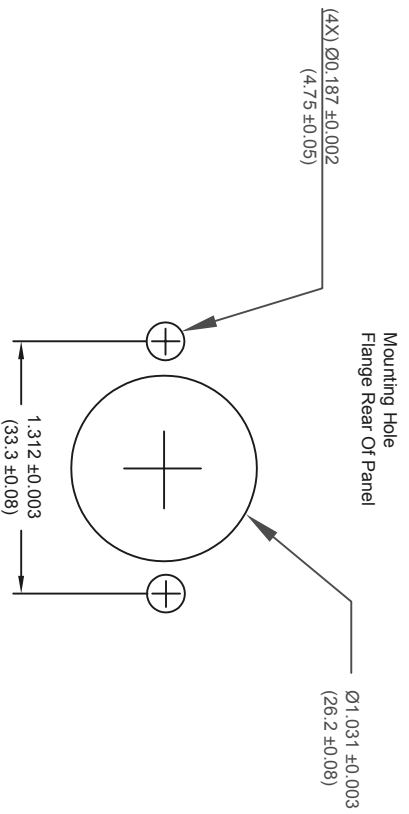
REVISIONS

DCP #	REV	DESCRIPTION	DRAWN	DATE	CHECKD	DATE	APPRVD	DATE
			SHA	18-08-10	M/RD	20-08-10	XXX	01-09-10

DOC. NO. SPC-F005 * Effective: 7/8/02 * DCP No: 1398



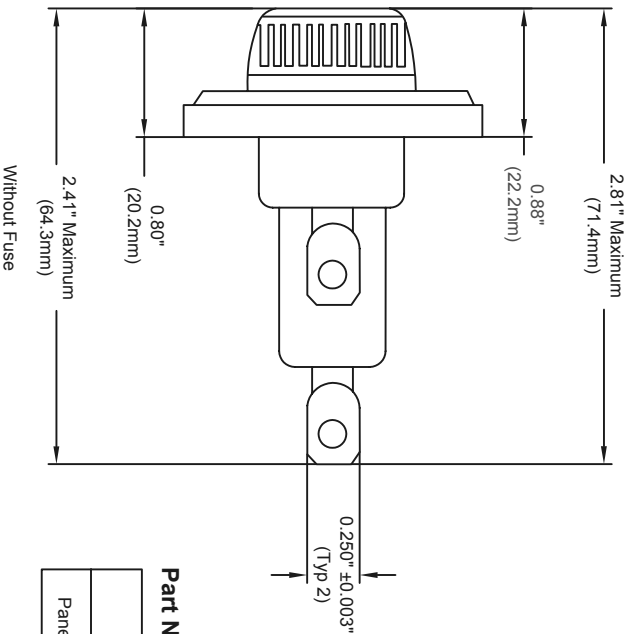
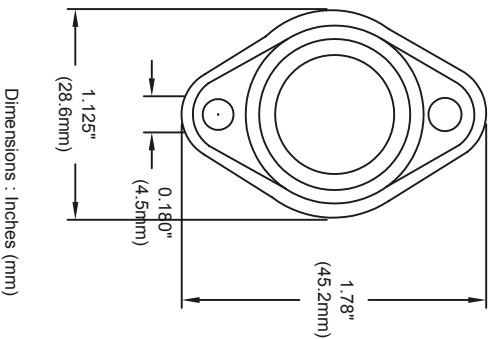
RoHS Compliant



Agency Approvals: UL Recognized - Guide IZLT2, File E14853
 CSA Certified - CLASS 6225-01, FILE EA7235
 Temperature Rating: 150°C
 Current: 30A
 Voltage: 600 VAC

CE Logo denotes compliance with European Union Low Voltage Directive (50-1000 VAC, 75-1500 VDC)

General Information:
 With combination 1/4" Quick-Connect/solder terminals.
 Bayonet Type Knob.
 For 1332" x 1-1/2" (38.1mm) Fuses.



Dimensions : Inches (mm)

Part Number Table

Description	Part Number
Panel Mount Fuseholder	MCHPS-RH

DISCLAIMER:

ALL STATEMENTS AND TECHNICAL INFORMATION CONTAINED HEREIN ARE BASED UPON INFORMATION AND/OR TESTS WE BELIEVE TO BE ACCURATE AND RELIABLE. SINCE CONDITIONS OF USE ARE BEYOND OUR CONTROL, THE USER SHALL DETERMINE THE SUITABILITY OF THE PRODUCT FOR THE INTENDED USE AND ASSUME ALL RISK AND LIABILITY WHATSOEVER IN CONNECTION THEREWITH.

TOLERANCES:

UNLESS OTHERWISE SPECIFIED, DIMENSIONS ARE FOR REFERENCE PURPOSES ONLY.

DRAWN BY: SHA DATE: 18-08-10

CHECKED BY: MRD DATE: 20-08-10

APPROVED BY: XXX DATE: 01-09-10

DRAWING TITLE:

Panel Mount Fuseholder

SIZE: A DWG. NO.: XXX ELECTRONIC FILE: 92N5197

SCALE: NTS SHEET: 1 OF 1