



Extract from the online catalog

## MC 1,5/16-G-3,5

Order No.: 1844359

The figure shows a 10-position version of the product



<http://eshop.phoenixcontact.de/phoenix/treeViewClick.do?UID=1844359>

Header, Nominal current: 8 A, Nom. voltage: 160 V, Pitch: 3.5 mm, Number of positions: 16, Color: green, Assembly: Soldering

Commercial data	
EAN	4017918113391
Pack	50 pcs.
Customs tariff	85366990
Weight/Piece	0.00413 KG
Catalog page information	Page 174 (CC-2009)

<http://www.download.phoenixcontact.com>  
Please note that the data given here has been taken from the online catalog. For comprehensive information and data, please refer to the user documentation. The General Terms and Conditions of Use apply to Internet downloads.

Technical data	
<b>Dimensions / positions</b>	
Pitch	3.5 mm
Dimension a	52.5 mm
Number of positions	16
Pin dimensions	0,8 x 0,8 mm
Hole diameter	1.2 mm
<b>Technical data</b>	
Insulating material group	IIIa
Rated surge voltage (III/3)	2.5 kV
Rated surge voltage (III/2)	2.5 kV

MC 1,5/16-G-3,5 Order No.: 1844359  
http://eshop.phoenixcontact.de/phoenix/treeViewClick.do?UID=1844359

Rated surge voltage (II/2)	2.5 kV
Rated voltage (III/2)	160 V
Rated voltage (II/2)	250 V
Connection in acc. with standard	EN-VDE
Nominal current $I_N$	8 A
Nominal voltage $U_N$	160 V
Maximum load current	8 A
Insulating material	PBT
Inflammability class acc. to UL 94	V0

### Certificates / Approvals



Certification

CB, CSA, CUL, GOST, UL, VDE-PZI

#### CSA

Nominal voltage $U_N$	300 V
Nominal current $I_N$	8 A

#### CUL

Nominal voltage $U_N$	300 V
Nominal current $I_N$	8 A

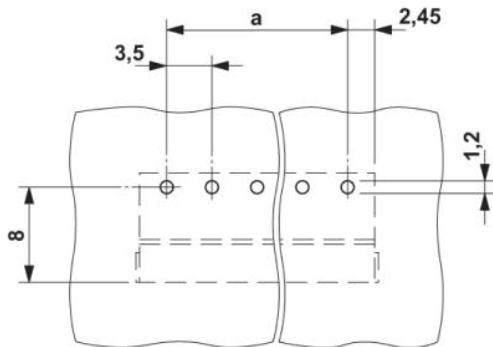
#### UL

Nominal voltage $U_N$	300 V
Nominal current $I_N$	8 A

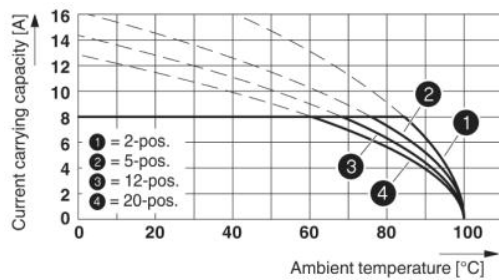
MC 1,5/16-G-3,5 Order No.: 1844359  
http://eshop.phoenixcontact.de/phoenix/treeViewClick.do?UID=1844359

## Drawings

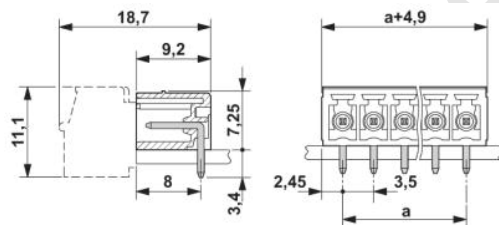
### Drilling diagram



### Diagram



### Dimensioned drawing



MC 1,5/16-G-3,5 Order No.: 1844359  
<http://eshop.phoenixcontact.de/phoenix/treeViewClick.do?UID=1844359>

---

**Address**

PHOENIX CONTACT GmbH & Co. KG  
Flachsmarktstr. 8  
32825 Blomberg, Germany  
Phone +49 5235 3 00  
Fax +49 5235 3 41200  
<http://www.phoenixcontact.de>



© 2009 Phoenix Contact  
Technical modifications reserved;

onlinecomponents.com