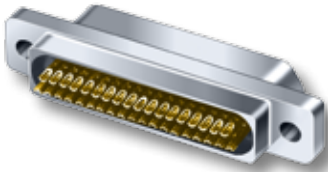


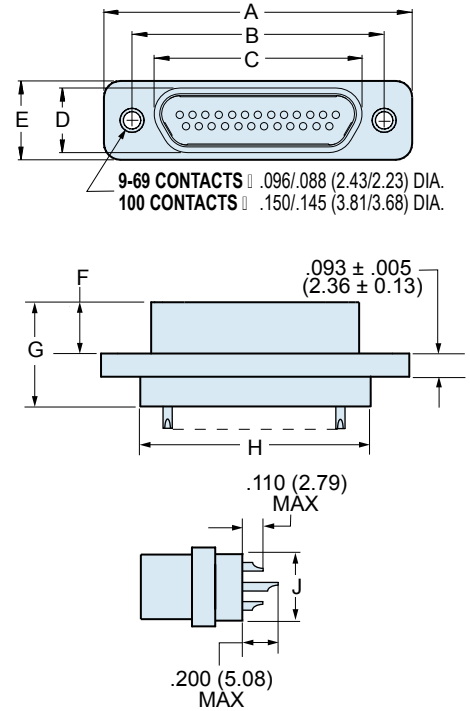


MIL-DTL-83513/01 & /02 Micro-D Connectors Metal Shell Solder Cup



Metal Shell Solder Cup M83513 Connectors

feature gold-plated TwistPin non-removable contacts for solder termination to AWG #26 or smaller wire.



M83513/01 & /02 SOLDER CUP PART NUMBERS				
Layout	Config.	Electroless Nickel Plated Aluminum Shell	Cadmium Plated Aluminum Shell	Passivated Stainless Steel Shell
9P	Plug	M83513/01-AN	M83513/01-AC	M83513/01-AP
9S	Receptacle	M83513/02-AN	M83513/02-AC	M83513/02-AP
15P	Plug	M83513/01-BN	M83513/01-BC	M83513/01-BP
15S	Receptacle	M83513/02-BN	M83513/02-BC	M83513/02-BP
21P	Plug	M83513/01-CN	M83513/01-CC	M83513/01-CP
21S	Receptacle	M83513/02-CN	M83513/02-CC	M83513/02-CP
25P	Plug	M83513/01-DN	M83513/01-DC	M83513/01-DP
25S	Receptacle	M83513/02-DN	M83513/02-DC	M83513/02-DP
31P	Plug	M83513/01-EN	M83513/01-EC	M83513/01-EP
31S	Receptacle	M83513/02-EN	M83513/02-EC	M83513/02-EP
37P	Plug	M83513/01-FN	M83513/01-FC	M83513/01-FP
37S	Receptacle	M83513/02-FN	M83513/02-FC	M83513/02-FP
51P	Plug	M83513/01-GN	M83513/01-GC	M83513/01-GP
51S	Receptacle	M83513/02-GN	M83513/02-GC	M83513/02-GP
100P	Plug	M83513/01-HN	M83513/01-HC	M83513/01-HP
100S	Receptacle	M83513/02-HN	M83513/02-HC	M83513/02-HP

Layout	DIMENSIONS																	
	A Max.		B		C Max.		D Max.		E Max.		F		G Max.		H Max.		J Max.	
	In.	mm.	In. $\pm .003$	mm. ± 0.08	In.	mm.	In.	mm.	In.	mm.	In. $\pm .003$	mm. ± 0.08	In.	mm.	In.	mm.	In.	mm.
9P	.785	19.94	.565	14.35	.333	8.46	.184	4.67	.310	7.87	.183	4.65	.416	10.57	.400	10.16	.270	6.86
9S	.785	19.94	.565	14.35	.400	10.16	.250	6.35	.310	7.87	.195	4.95	.429	10.90	.400	10.16	.270	6.86
15P	.935	23.75	.715	18.16	.483	12.27	.184	4.67	.310	7.87	.183	4.65	.416	10.57	.550	13.97	.270	6.86
15S	.935	23.75	.715	18.16	.551	14.00	.250	6.35	.310	7.87	.195	4.95	.429	10.90	.550	13.97	.270	6.86
21P	1.085	27.56	.865	21.97	.633	16.08	.184	4.67	.310	7.87	.183	4.65	.416	10.57	.700	17.78	.270	6.86
21S	1.085	27.56	.865	21.97	.701	17.81	.250	6.35	.310	7.87	.195	4.95	.429	10.90	.700	17.78	.270	6.86
25P	1.185	30.01	.965	24.51	.733	18.62	.184	4.67	.310	7.87	.183	4.65	.416	10.57	.800	20.32	.270	6.86
25S	1.185	30.01	.965	24.51	.801	20.35	.250	6.35	.310	7.87	.195	4.95	.429	10.90	.800	20.32	.270	6.86
31P	1.335	33.91	1.115	28.32	.883	22.43	.184	4.67	.310	7.87	.183	4.65	.416	10.57	.950	24.13	.270	6.86
31S	1.335	33.91	1.115	28.32	.951	24.16	.250	6.35	.310	7.87	.195	4.95	.429	10.90	.950	24.13	.270	6.86
37P	1.485	37.72	1.265	32.13	1.033	26.24	.184	4.67	.310	7.87	.183	4.65	.416	10.57	1.100	27.94	.270	6.86
37S	1.485	37.72	1.265	32.13	1.101	27.96	.250	6.35	.310	7.87	.195	4.95	.429	10.90	1.100	27.94	.270	6.86
51P	1.435	36.45	1.215	30.86	.983	24.97	.228	5.79	.351	8.92	.183	4.65	.416	10.57	1.050	26.67	.310	7.87
51S	1.435	36.45	1.215	30.86	1.051	26.70	.296	7.52	.351	8.92	.195	4.95	.429	10.90	1.050	26.67	.310	7.87
100P	2.170	55.12	1.800	45.72	1.383	35.13	.270	6.86	.394	10.01	.183	4.65	.416	10.57	1.442	36.63	.360	9.14
100S	2.170	55.12	1.800	45.72	1.451	36.86	.333	8.46	.394	10.01	.195	4.95	.429	10.90	1.442	36.63	.360	9.14