

Customer Information Sheet

DRAWING No.: M80-28300XX & M80-28400XX SHT 2 OF 2

IF IN DOUBT - ASK

©

NOT TO SCALE

THIRD ANGLE PROJECTION

ALL DIMENSIONS IN mm

SPECIFICATION:

MATERIAL:
BERYLLIUM COPPER

FINISH:

45 = 0.3μ MIN GOLD, ALL OVER
42 = 3μ MIN 100% TIN AND 0.3μ MIN GOLD, SELECTIVE PLATE
ALL FINISHES = NICKEL UNDERPLATE

MECHANICAL:

INSERTION FORCE = 2.8N MAX, 1.0N MIN
WITHDRAWAL FORCE = 1.8N MAX, 0.2N MIN
DURABILITY = 500 OPERATIONS

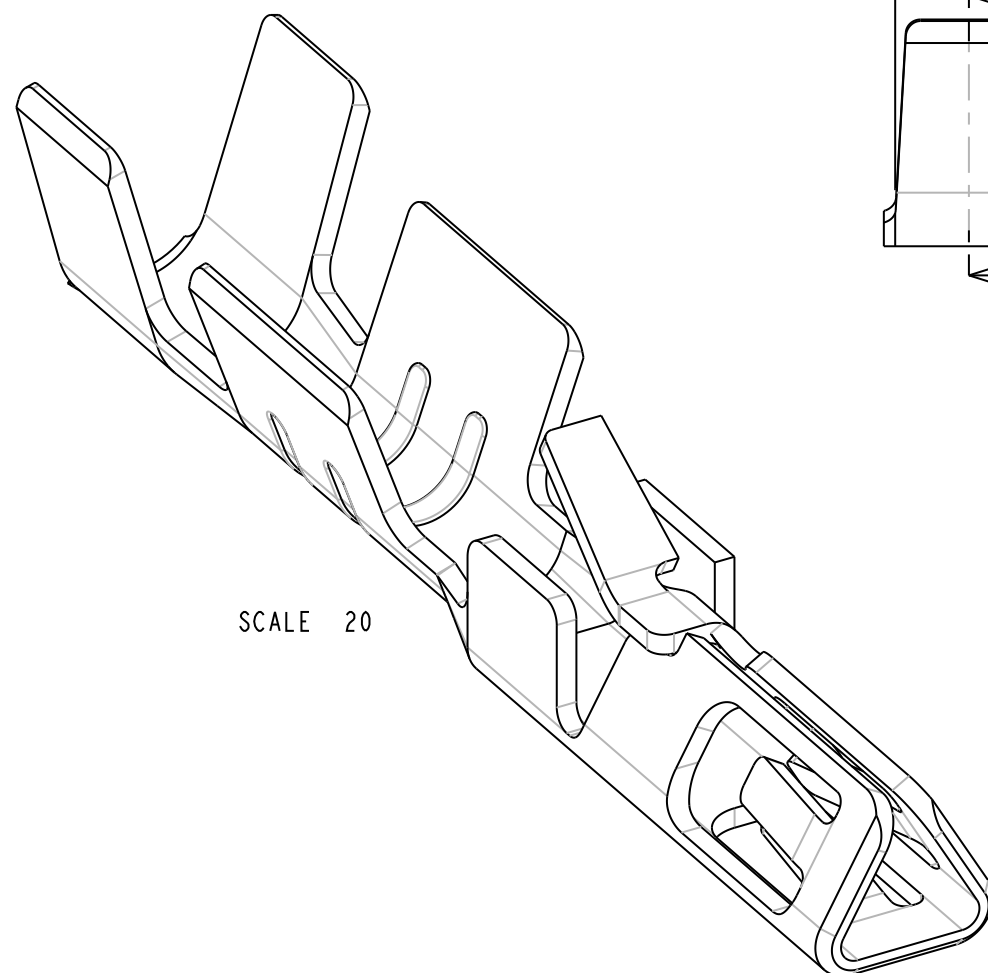
ENVIRONMENTAL:

OPERATING TEMPERATURE = -55°C TO +125°C

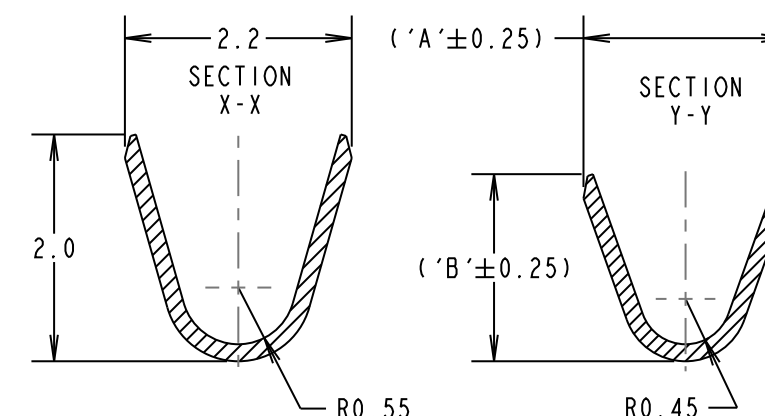
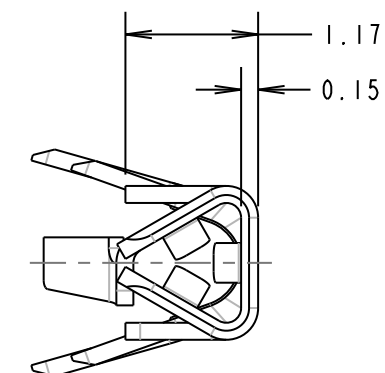
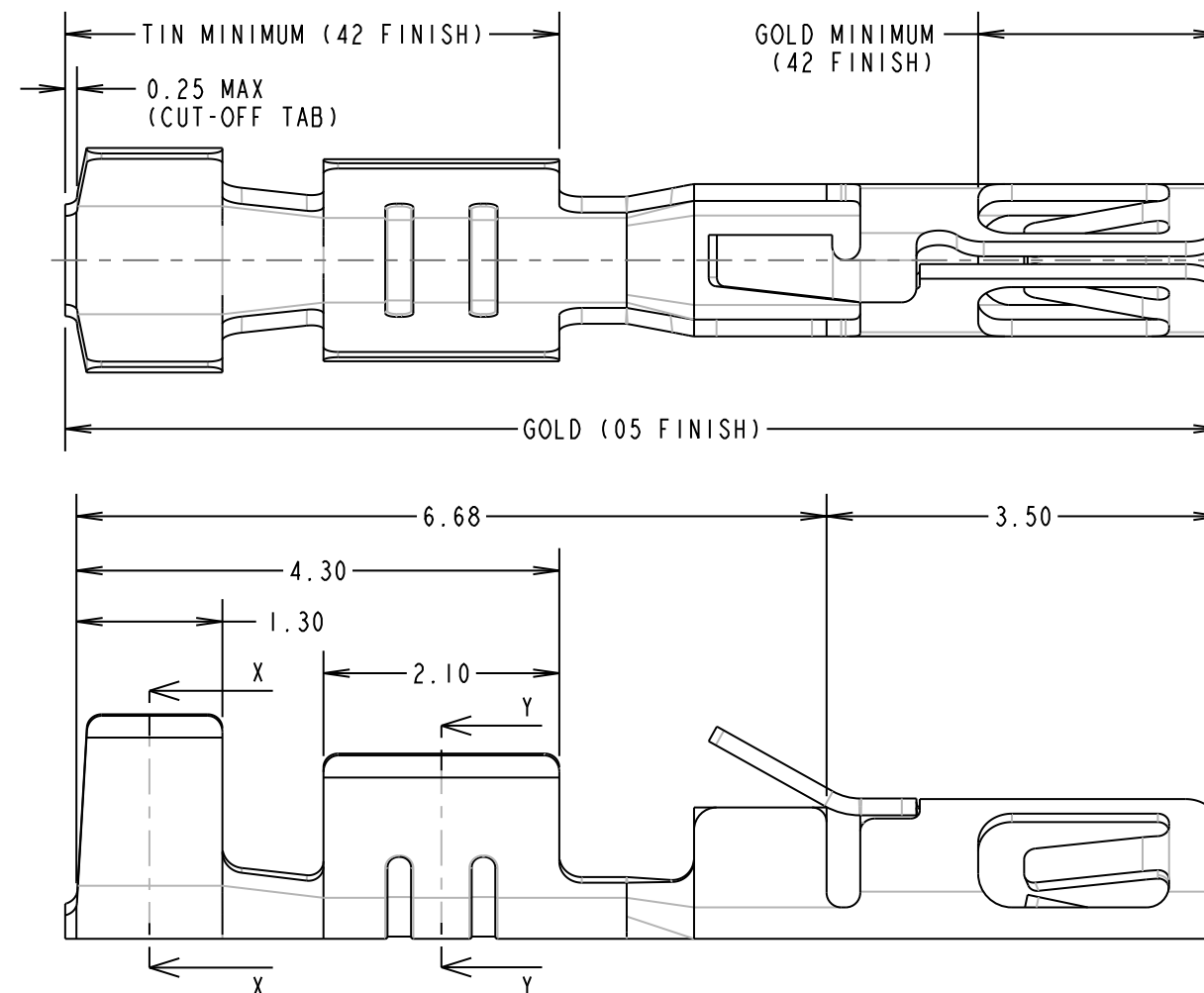
PACKING:

LOOSE, 100/BOX

FOR COMPLETE CONNECTOR SPECIFICATION, SEE
COMPONENT SPECIFICATION C040XX (LATEST ISSUE)



SCALE 20



NOTES:

- TO BE USED WITH THE FOLLOWING FEMALE HOUSING:
M80-454XX98 = HOUSING ONLY
M80-455XX98 = HOUSING + SLOTTED JACKSCREW
M80-456XX98 = HOUSING + HEX SOCKET JACKSCREW
M80-457XX98 = HOUSING + REVERSE FIX JACKSCREW
M80-458XX98 = HOUSING + GUIDE AND BOARD MOUNT
- SUITABLE FOR PTFE INSULATED EQUIPMENT
WIRE TO BS 3G 210 TYPE A, WIRE 22-28 AWG,
WIRE INSULATION Ø0.6mm-Ø1.1mm.
- STRIP WIRE BY 2.5-3.0mm FOR CRIMPING.
- CRIMP SUITABLE FOR PROCESSING WITH HAND
CRIMP TOOL Z80-255.
- FOR INSTRUCTIONS ON HAND CRIMP TOOL
Z80-255, SEE INSTRUCTION SHEET IS-27.
- CONTACTS ARE AVAILABLE ON REELS, PART NUMBER
M80-25300XX FOR 24-22 AWG WIRE AND
M80-25400XX FOR 28-26 AWG WIRE, SUITABLE FOR
PROCESSING WITH LEFT SIDE FEED CRIMPING PRESS.
CONTACT datamate@harwin.com FOR DETAILS.

PART No.	DIMENSION	
	'A'	'B'
M80-28300XX	1.80	1.65
M80-28400XX	1.34	1.00

ORDER CODE:

M80-XXX00XX

WIRE SIZE:

283 = 24-22 AWG (0.22-0.34mm²)
284 = 28-26 AWG (0.08-0.12mm²)

FINISH:

45 = GOLD, ALL OVER
42 = 100% TIN & GOLD, SELECTIVE

BMK	C	17.09.08	10124
NAME	ISS.	DATE	C/NOTE
APPROVED: BMK			
CHECKED: RA			
DRAWN: B. M. KENT			
CUSTOMER REF.:			
ASSEMBLY DRG:			

HARWIN

HARWIN USA
TEL: 603 893 5376
FAX: 603 893 5396
mis@harwin.com

HARWIN Europe (UK)
TEL: 023 9231 4545
FAX: 023 9231 4590
mis@harwin.co.uk

HARWIN Asia
TEL: +65 6 779 4909
FAX: +65 6 779 3868
mis@harwin.com.sg

THIS DRAWING AND ANY
INFORMATION OR DESCRIPTIVE
MATTER SET OUT HEREON ARE
CONFIDENTIAL AND COPYRIGHT
PROPERTY OF THE HARWIN
GROUP AND MUST NOT BE
DISCLOSED, LOANED, COPIED
OR USED FOR MANUFACTURING,
TENDERING OR FOR ANY
OTHER PURPOSE WITHOUT
THEIR WRITTEN PERMISSION.

TOLERANCES

X. = ±1mm
X.X = ±0.25mm
X.XX = ±0.10mm
X.XXX = ±0.01mm
ANGLES = ±5°
UNLESS STATED

MATERIAL:

SEE ABOVE

FINISH: SEE ABOVE

S/AREA: mm²

TITLE: DATAMATE TRIO-TEK
FEMALE CRIMP CONTACT LOOSE
24-22 AWG & 28-26 AWG

DRAWING NUMBER:
M80-28300XX & M80-28400XX

SHT
2 OF 2