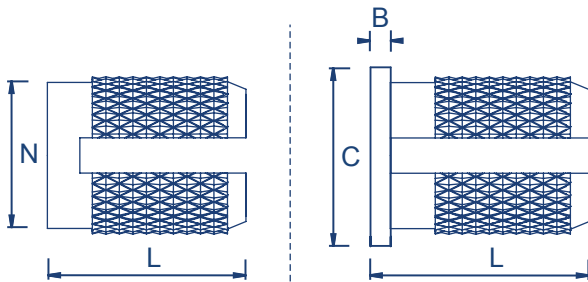


# Expansion-Sert™

Unheaded (UHBRXP) Headed (HDBRXP) Reverse Headed (RVBRXP)



## Brass/Self Colour



## Metric Dimensions

Thread size	Metric	M2*	M2.5*	M3	M3.5	M4	M5	M6	M8*
L mm		3.9	4.7	4.7	6.3	7.9	9.4	12.6	12.6
B mm		0.43	0.51	0.51	0.66	0.82	0.99	1.25	1.25
C mm		4.8	5.5	5.5	6.4	7.1	7.9	9.5	11.1
N max mm		3.2	4.0	4.0	4.7	5.5	6.3	7.9	9.5
Recommended Hole Size mm (-0.0/+0.1)		3.2	4.0	4.0	4.8	5.6	6.4	8.0	9.6
Minimum Wall Thickness mm		2.4	3.2	3.2	3.6	4.0	4.8	6.0	7.0

### \*Non preferred - Please enquire for availability

Non standard lengths and stud versions available on request  
Unified price and delivery available upon request

## Expansion-Sert™ Information for designers

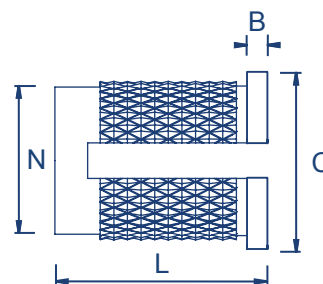
The Expansion-Sert™ is a press-in insert, designed for post mould installation into thermosets. The knurl pattern makes this insert ideal for hard thermosets.

### Advantages:

- Simple, press-in installation
- Provides self-locking action on mating screw
- Good pull out and torque resistance

### Installation Data

The Expansion-Sert™ should be installed with a press that can provide a steady squeezing action to prevent damage to the mating boss. It is important that the mating screw fully penetrates the insert to achieve full expansion and optimum pull-out resistance.



Reverse Headed Expansion-Sert™ - RVBRXP

## Prefix & Suffix Ordering

*\*For thread size, please refer to the first characters prior to the “-“ on the part number (i.e. M2, M2.5, etc.)*

*\*SF part number suffix relates to Self Finish*

## Prefix & Suffix Ordering

*\*For thread size, please refer to the first characters prior to the “-“ on the part number (i.e. M2, M2.5, etc.)*

*\*SF part number suffix relates to Self Finish*

## Prefix & Suffix Ordering

*\*For thread size, please refer to the first characters prior to the “-“ on the part number (i.e. M2, M2.5, etc.)*

*\*SF part number suffix relates to Self Finish*