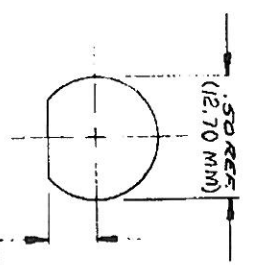
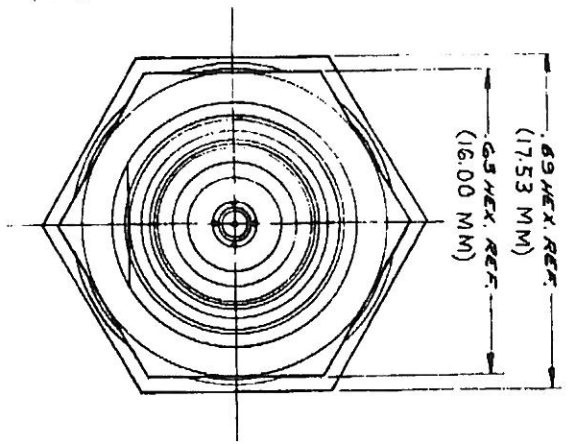


NOTES:  
 1. FOR USE WITH RG-58, 142, 225 & 400/U CABLE GROUPS.  
 2. FOR CABELING INSTRUCTIONS SEE CP-1004.

UNLESS OTHERWISE SPECIFIED:  
 1. TOLERANCES: FRACTIONS & 2 PLACE DECIMALS & C/D 2. REMOVE ALL BURRS, BREAK SHARP EDGES .008 MAX.  
 3 PLACE DECIMALS & .004 ANGLES & C/D 3. SURFACE FINISHES AS SPECIFIED UNLESS NOTED  
 4. SURFACE ROUGHNESS AS SPECIFIED UNLESS NOTED  
 5. ALL DIMENSIONS PRIOR TO PLATING.  
 EXCEED HALF THE SUM OF THEIR TOLERANCES.



MOUNTING HOLE  
 .22 REF.  
 (5.59 MM)

S-D

(SHEET 1 OF 2)

REV	CHANGES	REVISIONS
5	CN 16938A MJB 4 DEC 78	
6	CN 22767 E SEP 16 NOV 81	
7	CN 32302 A LNM 20 JUN 90	

M3901E/28-0101

SCALE: 4:1	DATE: 4-19-19
USED ON:	
REF:	
PRINTED:	
SPEC. KER 10004	
MATEL:	
SPIC:	
TVC BULKHEAD JACK	
DATE: 4 DEC 78	DATE: 7 DEC 78
DRW: MJB	CHK: JES
APP: [Signature]	DATE: 7 DEC 78
48 HARBORLAND ROAD	
KINGS ELECTRONICS	
M3901E/28-0101	

(SHEET 1 OF 2)

ITEM	REQ'D	DESCRIPTION	PART NO.
1	1	CLAMP NUT	704-7-MC7
2	1	WASHER	89C-1-MC7
3	1	GASKET	704-6-M99
4	1	GASKET	492A-10-M99
5	1	BRAID CLAMP	704-5-MC7
6	1	LOCKWASHER	492A-12-MC7
7	1	BUSHING	1-1451-1MC7
8	1	HEX NUT	492A-9-MC7
9	1	INSULATOR	1-1450-1M99
10	1	INSULATOR	1-1453-1M99
11	1	BNC CONTACT F	1-1452-1M99
12	1	BODY	
13	1	CABLING INSTRUCTIONS	

REVISIONS	
ISSUE	CHANGES
5	CN 18938A 4 DEC 78
6	CN 22767 E JEP 16 NOV. 81
7	CN 32302 A LNM 20 JUN 96

PARTS LIST	
DRAWN M M	DATE 5 DEC 78
APPR.	DATE 7 DEC 78

FINISH	
SPEC. KER 10004	
MATL.	
SPEC.	

USE ON:	KA-19-19
---------	----------

S-D

S-D

1. TOLERANCES: FRACTIONS & 2 PLACE DECIMALS ±.010  
 3 PLACE DECIMALS ±.004  
 T. I. R. CONCENTRICITY OF ANY 2 DIAMETERS MAY NOT

2. REMOVE ALL BURRS. BREAK SHARP EDGES .005 MAX.  
 3. NO FILLETS PERMITTED.  
 4. SURFACE ROUGHNESS 63 MICROINCHES RMS MAX.

UNLESS OTHERWISE SPECIFIED:  
 ANGLES ± 0° 30'  
 SURFACE FINISH: 32 MICROINCHES RMS  
 TYPICAL

**KINGS ELECTRONICS**  
 40 MARBLEDALE ROAD  
 TUCKAHOE, N. Y. 10707  
 M39012/28-0101  
 (SHEET 2 OF 2)