



RAF ELECTRONIC  
HARDWARE

a Division of MW Industries, Inc.



[ABOUT US](#) [WHAT'S NEW](#) [CONTACT US](#) [SERVICES](#) [QUALITY](#) [SITE MAP](#)

- [HOME](#)
- [PRODUCTS](#)
- [ONLINE CATALOG](#)
- [REQUEST QUOTE](#)
- [ORDER ONLINE](#)
- [CHECK STOCK](#)
- [REQUEST PRINT CATALOG](#)
- [REQUEST SAMPLES](#)
- [ENGINEERING DATA](#)
- [DISTRIBUTORS](#)
- [CAPABILITIES BROCHURE](#)

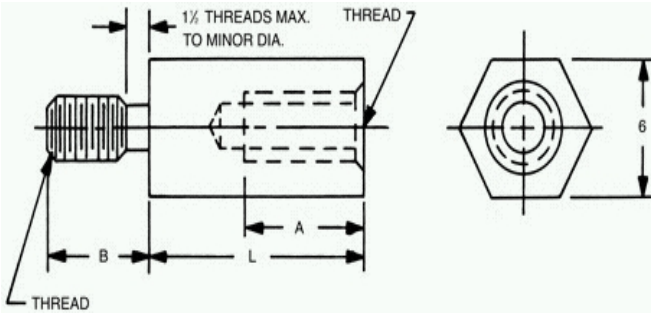
**CALL NOW:**  
**203 888-2133**



**NEFDA**  
New England Fastener  
Distributor Association



## 6mm Hex Male-Female Standoffs



Select	Part No.	Length	Select	Part No.	Length
<input type="radio"/>	M2140	5	<input type="radio"/>	M2155	20
<input type="radio"/>	M2141	6	<input type="radio"/>	M2156	21
<input type="radio"/>	M2142	7	<input type="radio"/>	M2157	22
<input type="radio"/>	M2143	8	<input type="radio"/>	M2158	23
<input type="radio"/>	M2144	9	<input type="radio"/>	M2159	24
<input type="radio"/>	M2145	10	<input type="radio"/>	M2160	25
<input type="radio"/>	M2146	11	<input type="radio"/>	M2161	28
<input type="radio"/>	M2147	12	<input type="radio"/>	M2162	31
<input type="radio"/>	M2148	13	<input type="radio"/>	M2163	34
<input type="radio"/>	M2149	14	<input type="radio"/>	M2164	37
<input type="radio"/>	M2150	15	<input type="radio"/>	M2165	40
<input type="radio"/>	M2151	16	<input type="radio"/>	M2166	43
<input type="radio"/>	M2152	17	<input type="radio"/>	M2167	46
<input type="radio"/>	M2153	18	<input type="radio"/>	M2168	49
<input type="radio"/>	M2154	19	<input type="radio"/>	M2169	52

Thread Length Code					
Select	Code	Thread	A	B	
<input type="radio"/>	2545	M2.5x0.45	4.8	3.97	
<input type="radio"/>	3005	M3x0.5	6.4	4.76	
<input type="radio"/>	3506	M3.5x0.6	9.5	6.35	
<input type="radio"/>	4007	M4x0.7	11.1	9.53	

Minimum Thread Depth 'A'  
Body Length 'L'

Minimum Thread Depth 'A' & Body Length 'L'												
Thread	L'	L'	L'	L'	L'	L'	L'	L'	L'	L'	L'	L'
M2.5x0.45	1.9	2.9	3.9									
M3x0.5	1.8	2.8	3.8	4.8	5.8							
M3.5x0.6	2.5	3.5	4.5	5.5	6.5	7.5	8.5	9.5				
M4x0.7	2.1	3.1	4.1	5.1	6.1	7.1	8.1	9.1	10.1	11.1		

[Home](#) [Previous](#) [Next](#)  
[Related A](#)

Ordering Code			
mxxxx	xxxx	xx	xx
Length	Thread	Material	Finis

**PART: ?????-????-??-?'**

Red ?'s show missing selections. [H](#)

Select	Code	Material	RoHS
<input type="radio"/>	AL	Aluminum	YES
<input type="radio"/>	B	Brass	YES
<input type="radio"/>	SS	Stainless Steel	YES
<input type="radio"/>	S	Steel	YES
<input type="radio"/>	N	Nylon	YES

[Material Specifications](#)

**SELECT FINISH:**

select a material first

\* Finishes ending with an asterisk  
are not RoHS Compliant

[Ordering non-standard items](#)

[HOME](#) | [PRODUCTS](#) | [ONLINE CATALOG](#) | [REQUEST QUOTE](#) | [ORDER ONLINE](#) | [CHECK STOCK](#) | [CONTACT US](#) | [SITE MAP](#)

© RAF Electronic Hardware, a Division of MW Industries | 95 Silvermine Rd., Seymour CT 06483 | Tel 203-888-2133 | Fax 203-888-9860