

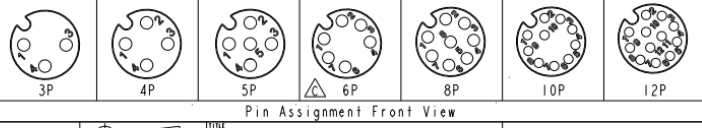
REV.	ECN NO.	DATE	SIGN	DESCRIPTION
B	LEN1570211-218 LE31570192-195	2015/07/17	Yulong_wang	Change to Share Drawing.
C	LEN1680919-930	2016/08/05	Yulong_wang	Add 6Pin & IP69K

(PG9) $13.6^{+0.1}$
 15.4 ± 0.1
 Recommended Panel Cut-Out

(M16*1.5) $13.6^{+0.1}$
 16.1 ± 0.1
 Recommended Panel Cut-Out

M 12A - XX P F F S - S H 8 XXX
 12A: A-Code
 03: 3Pin
 04: 4Pin
 05: 5Pin
 06: 6Pin
 08: 8Pin
 10: 10Pin
 12: 12Pin
 P: Panel (板端)
 F: Female Connector (母座)
 S: Screw (螺絲式)
 S: Solder Type (焊接式)
 F: Female Pin (每Pin)

MI2A-03PFFS-SH8XXX	2.5
MI2A-04PFFS-SH8XXX	2.5
MI2A-05PFFS-SH8XXX	2.5
MI2A-06PFFS-SH8XXX	2.5
MI2A-08PFFS-SH8XXX	2.5
MI2A-10PFFS-SH8XXX	4.5
MI2A-12PFFS-SH8XXX	4.5
Item No.	A B
	Pin伸出長度



UNIT: mm	TITLE	SCALE	SIZE	SHEET
TOLERANCE .X ±0.25 .XX ±0.1 .XXX ±0.05 ANGLES ±1°	MI2 A-Code Female Conn. Solder Rear Type	3:2	A4	1 of 1
	REV. C		NO. REV. A.5	QC: Inspection item

Amphenol LTW
 安費諾亮泰企業股份有限公司

ITEM NO.	DESIGN BY	DATE
	Yulong_wang	2016-08-05
DWG NO.	CHECKED BY	DATE
MI2A-XXPFFS-SH8XXX	Jinhai	2016-08-05
CUSTOMER	APPROVED BY	DATE
ALTW	Jerry	2016-08-05

THIS DOCUMENT IS SUBJECT TO CHANGE WITHOUT NOTICE. IT IS CONFIDENTIAL AND A PROPERTY OF AMPHENOL LTW. DISCLOSURE TO THIRD PARTIES HAS TO BE AUTHORIZED BY AMPHENOL LTW.