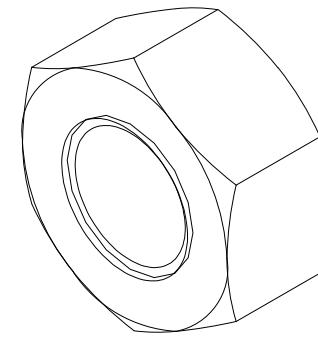
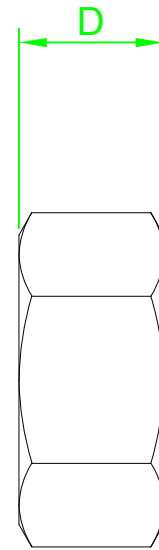
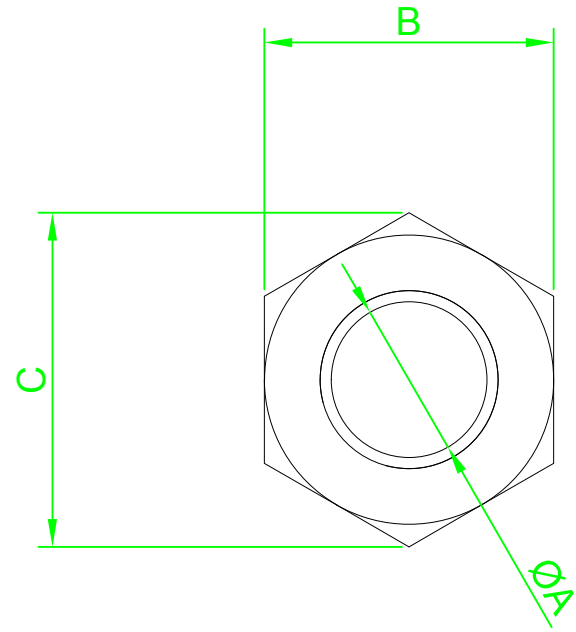


DO NOT SCALE DRAWING



REVISION

A INITIAL DRAWING 17.9.15

Part Number	ØA	B Nom	C Min	D Nom
M2 - HFA2- S100	M2-0.4	4	4.32	1.6
M2.5 - HFA2- S100	M2.5-0.45	5	5.45	2.0
M3 - HFA2- S100	M3-0.5	5.5	6.01	2.4
M3.5 - HFA2- S100	M3.5-0.6	6	6.58	2.8
M4 - HFA2- S100	M4-0.7	7	7.66	3.2
M5 - HFA2- S100	M5-0.8	8	8.79	4.0
M6 - HFA2- S100	M6-1.0	10	11.05	5.0
M8 - HFA2- S100	M8-1.25	13	14.38	6.5
M10 - HFA2- S100	M10-1.5	17	18.9	8.0
M12 - HFA2- S100	M12-1.75	19	21.1	10.0

NOTES:



UNLESS OTHERWISE SPECIFIED:  
DIMENSIONS ARE IN MM (MILLIMETERS).  
SURFACE FINISH:  
TOLERANCES: DIN 934

MATERIAL:  
Stainless Steel A2

TITLE:  
Hex Full Nut DIN 934

	NAME	DATE
DRAWN	Darryl Wilson	17.09.15
CHK'D		
APPVD		

HEAT TREATMENT:

DESIGN RIGHT. TR FASTENINGS LTD, 2003  
UNDER NO CIRCUMSTANCES MUST THIS  
DRAWING BE COPIED OR DISCLOSED  
WITHOUT FIRST OBTAINING WRITTEN  
AUTHORITY.

CUSTOMER PART NUMBER:  
N/A

FINISH:  
SELF FINISH

DRAWING NUMBER:  
TR32HFA2-

A4

PROJECTION

