

LTG/GR
Liquid Tight Grommet

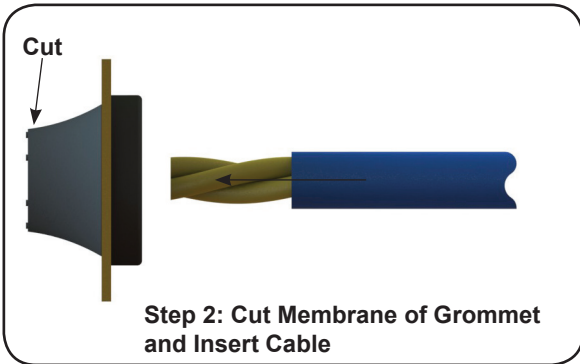
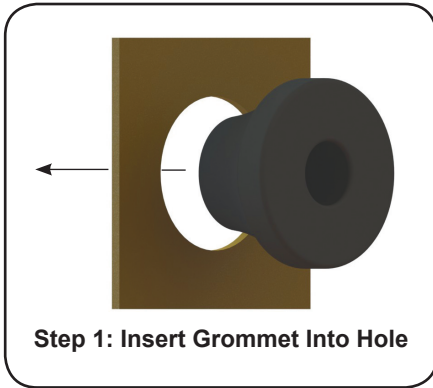


Fig. 1

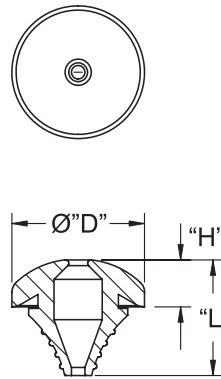
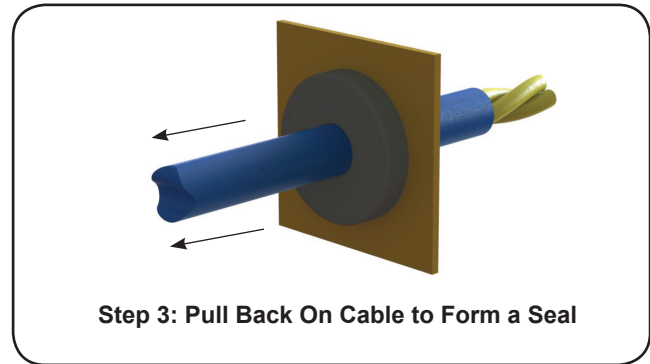
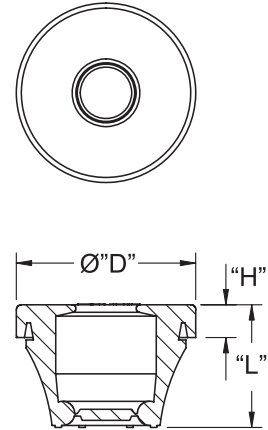


Fig. 2



- Offers protection from dust and water; rated to IP67
- Provides slight strain relief to the cable
- To install, snap into hole, cut the thin membrane, insert the cable and pull it back to form a seal
- Can act as a blanking plug until cable is installed

PG

Material: EPDM Rubber, 50 Shore A, RMS-153										
Part Number	Fig.	Color	Fits	Ø Mounting Hole	Panel Thickness	Cable Size	"D" Head Ø Ref.	"L" Height Ref.	"H" Ref.	Standard Pack
LTG-199017	1	Black	PG-7	.49 (12.5)	.02 - .08 (0.5 - 2)	.12 - .20 (3 - 5)	.79 (20)	.39 (17.5)	.28 (7.1)	1,000
LTG-1	2	Grey	PG-7	.50 (12.7)						
LTG-39897			PG-9	.63 (16)						
LTG-34715	PG-11		.75 (19)							
LTG-34716	PG-16		.91 (23)							
LTG-43021	PG-21		1.14 (29)							
LTG-2	PG-29		1.50 (38)							
LTG-3	PG-36	1.89 (48)			.04 - .16 (1 - 4)	.20 - .26 (5 - 7)	.83 (21)	.73 (18.5)	.24 (6.2)	500
						.28 - .39 (7 - 10)	.94 (24)	.75 (19)	.24 (6)	250
						.39 - .55 (10 - 14)	1.10 (28)	.87 (22.2)		100
						.55 - .79 (14 - 20)	1.33 (33.8)	.96 (24.4)	.26 (6.5)	
						.79 - .94 (20 - 24)	1.81 (46)	1.14 (29)	.31 (8)	
						.98 - 1.26 (25 - 32)	2.26 (57.5)	1.26 (32)		

Metric

Material: EPDM Rubber							
Part Number	Fig.	Color	Fits	Ø Mounting Hole	Panel Thickness	Cable Size	Standard Pack
GR67M16A	2	Grey	M16	.65 (16.5)	.04 - .16 (1 - 4)	.20 - .35 (5 - 9)	1,000
GR67M20A			M20	.81 (20.5)		.28 - .51 (7 - 13)	
GR67M25A			M25	1.00 (25.5)		.39 - .67 (10 - 17)	
GR67M32A			M32	1.28 (32.5)		.55 - .79 (14 - 20)	500
GR67M40A			M40	1.59 (40.5)		.75 - 1.02 (19 - 26)	250
GR67M50A			M50	1.99 (50.5)		1.02 - 1.34 (26 - 34)	