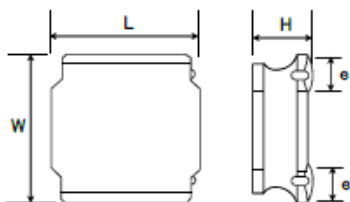


SMD Power Inductors (NR series)

NR4018T220M



■ Features

- Item Summary
22 μ H \pm 20%, 0.59A, 4.0x4.0x1.8mm
- Lifecycle Stage
Mass Production
- Standard packaging quantity (minimum)
Taping Embossed 3500pcs

■ Products characteristics table

Inductance	22 μ H \pm 20 %
Case Size (mm)	4.0x4.0
Rated Current (max)	0.59 A
Saturation Current (max)	0.8 A
Temperature Rise Current (max)	0.59 A
DC Resistance (typ)	0.36 Ω
DC Resistance (max)	0.432 Ω
LQ Measuring Frequency	100 kHz
Self Resonant Frequency (min)	16 MHz
Operating Temp. Range	-25 to +120 $^{\circ}$ C (Including-self-generated heat)
RoHS2 Compliance (10 subst.)	Yes
REACH Compliance (168 subst.)	Yes
Soldering	Reflow

■ External Dimensions

Dimension L	4.0 \pm 0.2 mm
Dimension W	4.0 \pm 0.2 mm
Dimension H	Max 1.8 mm
Dimension e	1.1 \pm 0.2 mm

■ Recommended Land Patterns

【推奨ランドパターン】
実装上の注意
・実装状態を確認の上ご使用くださいますようお願いいたします。
・本製品のはんだ付けはリフローはんだ工法に限ります。

【Recommended Land Patterns】
Surface Mounting
・Mounting and soldering conditions should be checked beforehand.
・Applicable soldering process to these products is reflow soldering only.

