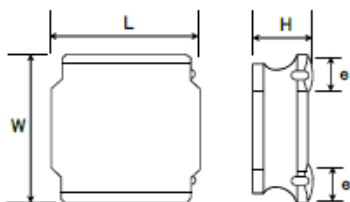


## SMD Power Inductors (NR series)

## NR3015T1R5N



## ■ Features

- Item Summary  
1.5uH±30%, 1.8A, 3.0x3.0x1.5mm
- Lifecycle Stage  
Mass Production
- Standard packaging quantity (minimum)  
Taping Embossed 2000pcs

## ■ Products characteristics table

Inductance	1.5 uH ± 30 %
Case Size (mm)	3.0x3.0
Rated Current (max)	1.8 A
Saturation Current (max)	1.8 A
Temperature Rise Current (max)	1.82 A
DC Resistance (typ)	40 mΩ
DC Resistance (max)	48 mΩ
LQ Measuring Frequency	100 kHz
Self Resonant Frequency (min)	87 MHz
Operating Temp. Range	-25 to +120 °C (Including-self-generated heat)
RoHS2 Compliance (10 subst.)	Yes
REACH Compliance (168 subst.)	Yes
Soldering	Reflow

## ■ External Dimensions

Dimension L	3.0 ±0.1 mm
Dimension W	3.0 ±0.1 mm
Dimension H	Max 1.5 mm
Dimension e	0.9 ±0.2 mm

## ■ Recommended Land Patterns

【推奨ランドパターン】  
実装上の注意  
・実装状態を確認の上ご使用くださいますようお願いいたします。  
・本製品のはんだ付けはリフローはんだ工法に限ります。

【Recommended Land Patterns】  
Surface Mounting  
・Mounting and soldering conditions should be checked beforehand.  
・Applicable soldering process to these products is reflow soldering only.

