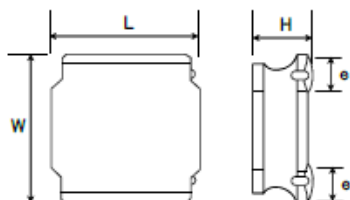


## SMD Power Inductors (NR series)

## NR3010T4R7M



## ■ Features

- Item Summary  
4.7uH±20%, 0.75A, 3.0x3.0x1.0mm
- Lifecycle Stage  
Mass Production
- Standard packaging quantity (minimum)  
Taping Embossed 2000pcs

## ■ Products characteristics table

|                                |   |
|--------------------------------|---|
| Inductance                     | 4.7 uH ± 20 %                                     |
| Case Size (mm)                 | 3.0x3.0   |
| Rated Current (max)            | 0.75 A  |
| Saturation Current (max)       | 0.75 A  |
| Temperature Rise Current (max) | 0.78 A  |
| DC Resistance (typ)            | 0.19 Ω  |
| DC Resistance (max)            | 0.228 Ω   |
| LQ Measuring Frequency         | 100 kHz   |
| Self Resonant Frequency (min)  | 56 MHz  |
| Operating Temp. Range          | -25 to +120 °C<br>(Including-self-generated heat) |
| RoHS2 Compliance (10 subst.)   | Yes   |
| REACH Compliance (163 subst.)  | Yes   |
| Soldering                      | Reflow  |

## ■ External Dimensions

|             |             |
|-------------|-------------|
| Dimension L | 3.0 ±0.1 mm |
| Dimension W | 3.0 ±0.1 mm |
| Dimension H | Max 1.0 mm  |
| Dimension e | 0.9 ±0.2 mm |

## ■ Recommended Land Patterns

【推奨ランドパターン】  
実装上の注意  
・実装状態を確認の上ご使用くださいようお願いいたします。  
・本製品のはんだ付けはリフローはんだ工法に限ります。

【Recommended Land Patterns】  
Surface Mounting  
・Mounting and soldering conditions should be checked beforehand.  
・Applicable soldering process to these products is reflow soldering only.

