

INLINE LANDSCAPE, TYPE 4 AND 12

INDUSTRY STANDARDS
Solid Door Enclosures:

 UL 508A Listed; Type 3, 4, 12; File No. E61997
 cUL Listed per CSA C22.2 No. 94; Type 3, 4, 12; File No. E61997

 NEMA/EEMAC Type 3, 4, 12
 CSA File Number 42186: Type 4, 12
 IEC 60529, IP66

Window Door Enclosures:

UL 508A Listed; Type 3, 4, 12; File No. E61997

 NEMA/EEMAC Type 12
 CSA File Number 42186: Type 3, 4, 12
 IEC 60529, IP66

APPLICATION

When applications require mounting electrical components the full width of an enclosure, the landscape orientation of this aesthetic INLINE Enclosure makes it possible. Full-width mounting brackets can be drilled anywhere along their length, providing maximum mounting flexibility.

SPECIFICATIONS

- Metric dimensions
- 16 gauge steel
- Seams continuously welded and ground smooth
- External formed body flange channels away liquids
- Large perimeter body opening
- External welded-on mounting brackets for easy installation
- Seamless foam-in-place gasket
- Bonding provision on cover and door
- Hardware kit includes panel mounting screws and grounding hardware
- Removable hinged door
- Self-grounding, slotted quarter-turn latches
- Door opens 180 degrees
- Window door models include flush-mounted 4.8-mm (3/16-in.) clear polycarbonate window

FINISH

Textured light-gray RAL 7035 polyester powder coating inside and out

ACCESSORIES

See also *Accessories*.
 DIN Rail or Panel-Mounting Brackets
 DIN3 Type Rails
 Grounding Kit
 Lock Inserts
 Mounting Bracket Kit
 INLINE Landscape Panels
 Wing Knob Latch

MODIFICATION AND CUSTOMIZATION

Hoffman excels at modifying and customizing products to your specifications. Contact your local Hoffman sales office or distributor for complete information.

BULLETIN: A54

Standard Product Hinged Solid Door

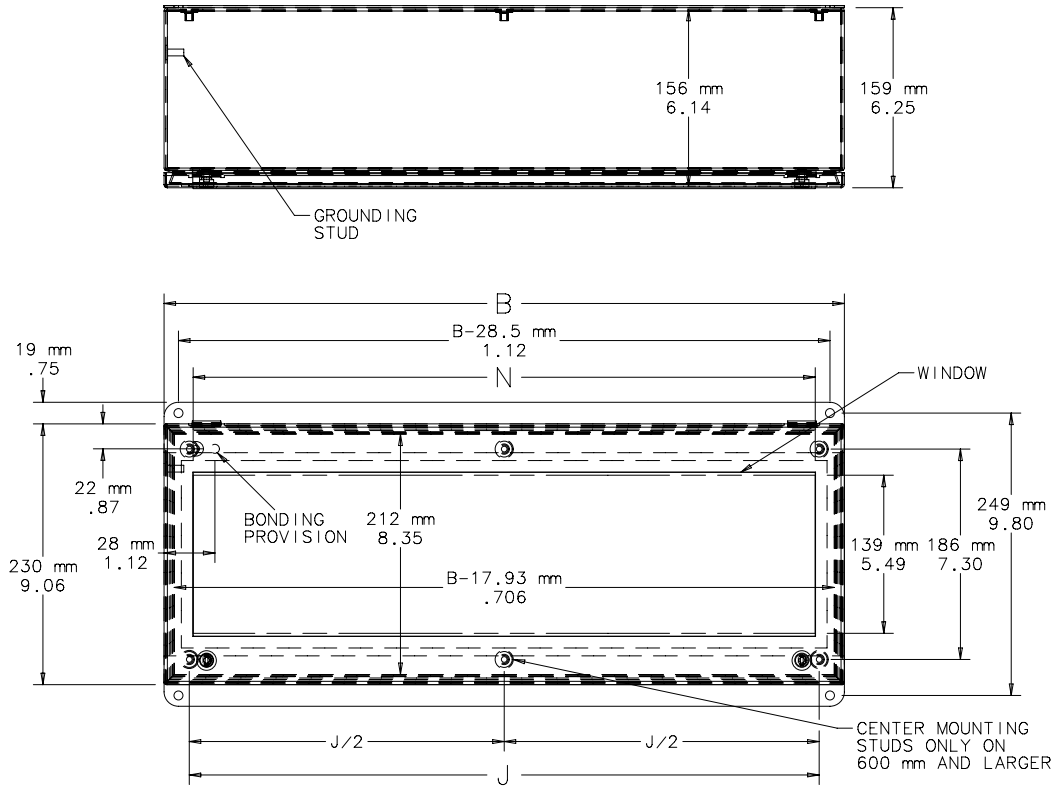
Catalog Number	AxBxC mm/in.	Panel	Conductive Panel	Mounting Studs J mm/in.	Clear Space Above Panel mm/in.
LHC233116	230 x 310 x 155	LP2331	LP2331G	265	140
	9.06 x 12.20 x 6.10			10.45	5.51
LHC234616	230 x 460 x 155	LP2346	LP2346G	416	140
	9.06 x 18.11 x 6.10			16.36	5.51
LHC236016	230 x 600 x 155	LP2360	LP2360G	556	140
	9.06 x 23.62 x 6.10			21.88	5.51
LHC237716	230 x 770 x 155	LP2377	LP2377G	726	140
	9.06 x 30.31 x 6.10			28.57	5.51
LHC239316	230 x 930 x 155	LP2393	LP2393G	881	140
	9.06 x 36.61 x 6.10			34.67	5.51

Enclosures are hinged on "B" side.

Purchase panels separately.

Standard Product **Hinged Window Door**

Catalog Number	AxBxC mm/in.	Panel	Conductive Panel	Window Size N mm/in.	Mounting Studs J mm/in.	Clear Space Above Panel mm/in.
LWC233116	230 x 310 x 155 9.06 x 12.20 x 6.10	LP2331	LP2331G	259 10.20	265 10.45	140 5.51
LWC234616	230 x 460 x 155 9.06 x 18.11 x 6.10	LP2346	LP2346G	409 16.11	416 16.36	140 5.51
LWC236016	230 x 600 x 155 9.06 x 23.62 x 6.10	LP2360	LP2360G	549 21.62	556 21.88	140 5.51
LWC237716	230 x 770 x 155 9.06 x 30.31 x 6.10	LP2377	LP2377G	719 28.31	726 28.57	140 5.51
LWC239316	230 x 930 x 155 9.06 x 36.61 x 6.10	LP2393	LP2393G	874 34.42	881 34.67	140 5.51



87565822