



Home » Pressure, Strain and Force » Load Cells, Force Sensors and... » Single Point and Platform Load... » LC60

Aluminum Single Point Load Cells



Aluminum Single Point Load Cells | Low Cost & High accuracy



- Aluminum-Alloy IP65 Single Point Load Cell.
- Colorless Anodized Aluminum
- Suitable for Pricing Scales, Bench Scales, etc.
- Available in Ranges from 600g to 200kg
- Maximum Platform Size:
 - LC61SP: 200 x 200 mm (7.87 x 7.87")
 - LC62SP: 250 x 350 mm (9.84 x 13.77")
 - LC63SP: 400 x 400 mm (15.74 x 15.74")

[Load Cells, Force Sensors and Torque Transducers - View related products](#)

Description

Omega's LC60 Series is a low cost, highly accurate, single point load cell, ideal for OEM applications such as electronic scales and weighing machines. The single point design is highly resistant to eccentric loading, allowing direct mounting to the scale base and weighing platform. The LC60 Series features a moisture-proof sealant and is available in ranges from 600 grams to 200 kilograms.

Specifications

OIML R60 Accuracy Class:

LC61: C3D

LC62 and LC63: C3

Output Sensitivity (= FS, mV/V):

LC61: 1.0 ±0.1

LC62 and LC63: 2.0 ±0.2

Maximum Number of Load Cell Intervals(nLC):

LC61: 2500

LC62 and LC63: 3000

Ratio of Minimum LC Verification Interval Y = Emax/vmin:

LC61: 5000

LC62 and LC63: 10000

Combined Error:

LC61: ±0.028 %FS

LC62 and LC63: ±0.02 %FS

Minimum Dead Load: 0% FS

Safe Overload: 120% FS

Maximum Overload: 150% FS

Zero Balance: ±2.0% FS

Excitation, Recommended Voltage: 5 to 12 VDC
Excitation Maximum: 18(VDC)
Input Resistance Ω : 406 ± 6
Output Resistance Ω : 350 ± 3
Insulation Resistance $M\Omega$: ≥ 5000 (50 VDC)
Compensated Temperature: -10 to 40°C (14 to 104°F)
Operating Temperature: -35 to 65°C (-31 to 149°F)
Storage Temperature: -40 to 70°C (-40 to 158°F)
Element Material: Aluminum
Recommended Bolt Size/Torque (Nm):
 LC61: M3/1.5
 LC62: M6/6 for < 30kg, M6/10 for > 30kg
 LC63: M6/10
Ingress Protection (According to EN 60529): IP65

Figure 1 **All Dimensions mm**

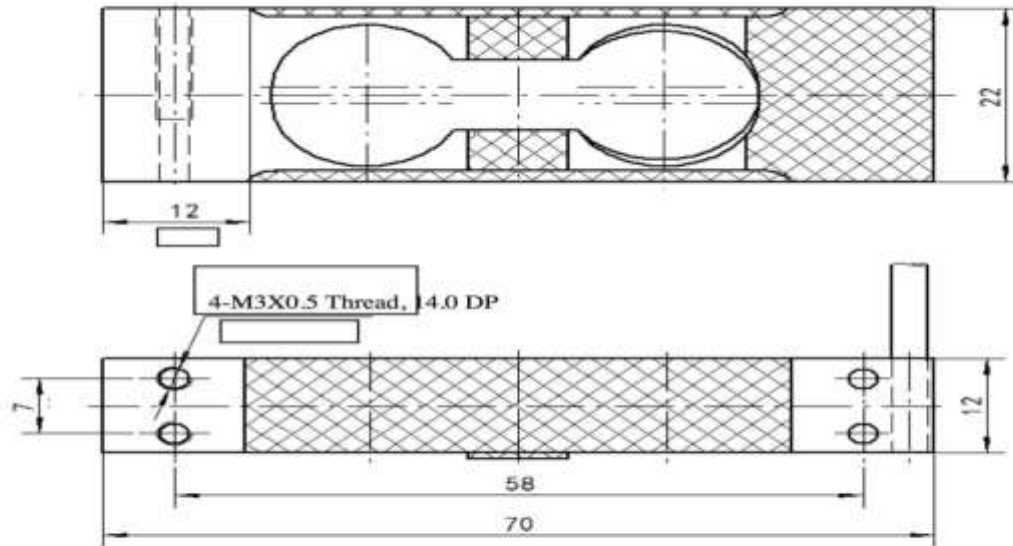


Figure 1

Figure 2

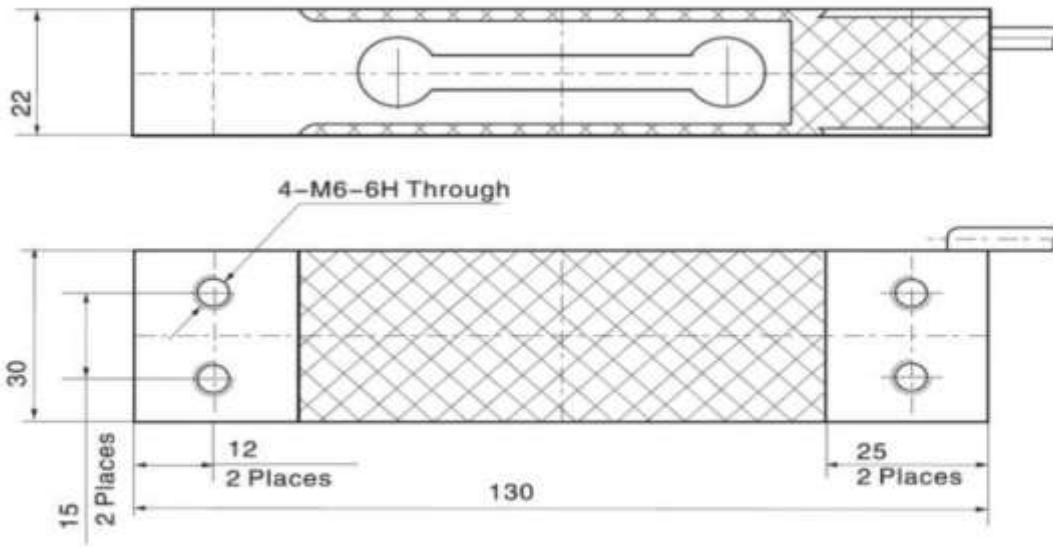


Figure 2

Figure 3

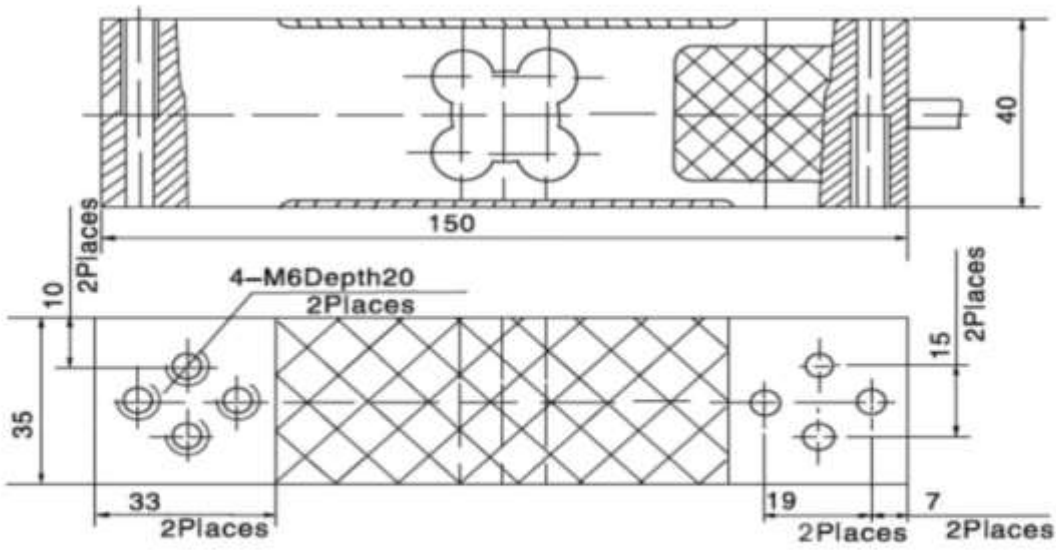
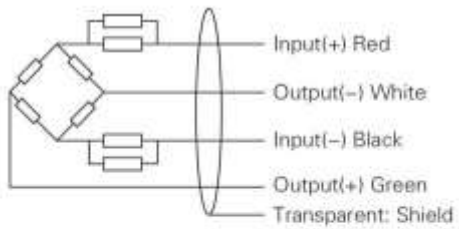


Figure 3

Wiring



- Shielded, 4 conductor cable.
- Standard cable length: 0.45m
- Shield not connected to element.
- Cable jacket is PVC

LC62SP-10KG

Aluminum single point load cell, 0-10 kg capacity, Capacity lb (kg) 22 (10), Dimensions Figure 2

LC62SP-50KG

Aluminum single point load cell, 0-50 kg capacity, Capacity lb (kg) 110 (50), Dimensions Figure 2