

THIS COPY IS PROVIDED ON A RESTRICTED BASIS AND IS NOT TO BE USED IN ANY WAY DETRIMENTAL TO THE INTERESTS OF PANDUIT CORP.

NOTES:

1. MATERIAL:
BODY - ALUMINUM, TIN PLATED
SCREW - ALUMINUM, TIN PLATED
2. UL LISTED, CSA CERTIFIED, OR cULus FOR USE UP TO 600V & TEMPERATURE RATED 90 °C (AL9CU)
3. DUAL RATED FOR USE WITH COPPER OR ALUMINUM STRANDED CODE CONDUCTOR
4. THESE PARTS ARE RoHS COMPLIANT
5. USE OF OXIDE INHIBITING JOINT COMPOUND LIKE PANDUIT CMP-100 RECOMMENDED FOR PAD TO PAD AND CONDUCTOR SURFACES
6. SEE PACKAGING LABEL FOR TIGHTENING TORQUE INFORMATION
7. PKG QTY:
6 = 6

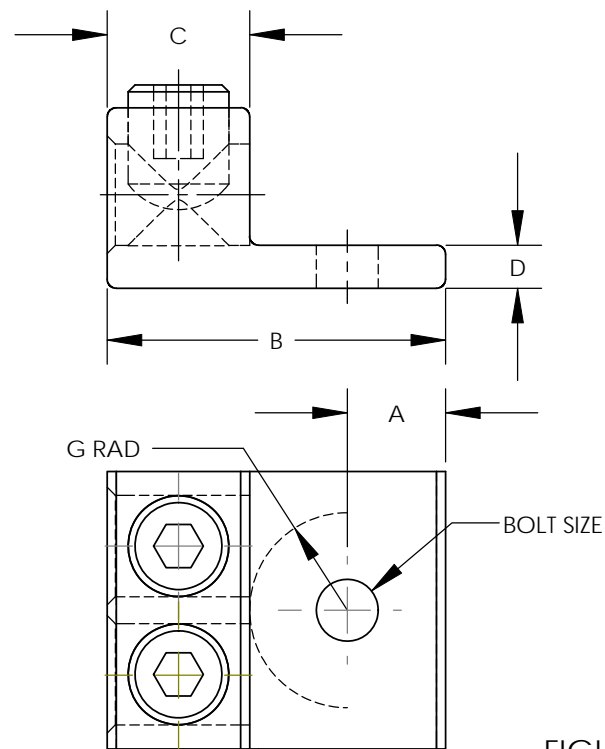


FIGURE 1 **L**

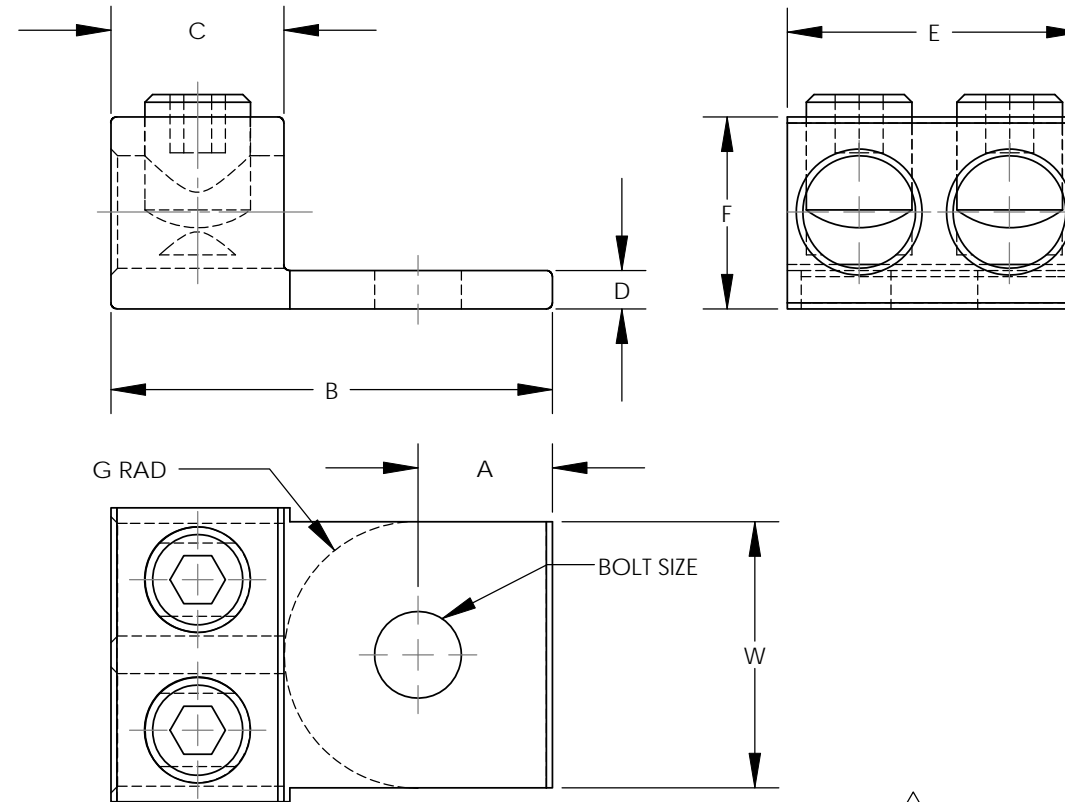
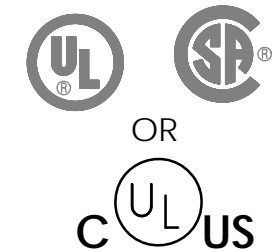


FIGURE 2 **L**



| PART NUMBER | FIG. | WIRE RANGE COPPER/ALUMINUM | WIRE STRIP LENGTH IN[mm] | STUD SIZE IN | DIMENSIONS - IN [mm] | | | | | | | | HEX KEY* | AGENCY |
|-----------------------------------|------|-------------------------------|-----------------------------|-----------------|----------------------|-------------|-------------|-------------|-------------|-------------|-------------|-------------|----------|----------|
| | | | | | A | B | C | D | E | F | G | W | | |
| E LAM2A10-14-6Y | 1 | 14 AWG - 10 AWG | .62 [15.7] | 1/4 | 0.43 [10.8] | 147 [37.3] | 0.62 [15.7] | 0.19 [4.8] | 113 [28.6] | 0.78 [19.9] | 0.42 [10.7] | N/A | SLOTTED | cULus |
| D LAM2A20-14-6Y | 1 | 14 AWG - 20 AWG | .62 [15.7] | 1/4 | 0.43 [10.8] | 147 [37.3] | 0.62 [15.7] | 0.19 [4.8] | 120 [30.6] | 0.78 [19.9] | 0.42 [10.7] | N/A | 3/16 | cULus |
| C LAM2A250-38-6Y | 2 | 6 AWG - 250 kcmil | 100 [25.4] | 3/8 | 0.51 [13.0] | 2.56 [65.1] | 100 [25.4] | 0.25 [6.4] | 164 [41.7] | 1.19 [30.2] | 1.05 [26.7] | 150 [38.0] | 5/16 | cULus |
| B LAM2A350-12-6Y | 2 | 6 AWG - 350 kcmil | 113 [28.6] | 1/2 | 0.88 [22.2] | 2.87 [73.0] | 113 [28.6] | 0.25 [6.4] | 191 [48.6] | 1.25 [31.8] | 0.86 [21.8] | 173 [44.0] | 5/16 | cULus |
| K J LAM2A600-12-6Y | 2 | 2 AWG - 600 kcmil | 138 [34.9] | 1/2 | 0.63 [16.0] | 3.19 [81.0] | 138 [34.9] | 0.44 [11.2] | 2.38 [60.5] | 1.56 [39.6] | 1.19 [30.2] | 2.00 [50.8] | 3/8 | UL & CSA |
| H I LAM2A1000-58-6Y | 1 | 500 kcmil - 1000 kcmil | 163 [41.4] | 5/8 | 0.88 [22.2] | 3.50 [88.9] | 163 [41.4] | 0.50 [12.7] | 3.50 [88.9] | 1.94 [49.3] | 1.00 [25.4] | N/A | 3/8 | UL & CSA |

* HEX SIZE MAY DIFFER FROM CHART. DIFFERENCE IN SIZE WILL NOT AFFECT FIT, FORM, OR FUNCTION OF PART

10N006AT-NC/01B **F**

PANDUIT CORP. TINLEY PARK, ILLINOIS

LAM2A SERIES
ALUMINUM MECHANICAL LUGS
CUSTOMER DRAWING

UNLESS OTHERWISE SPECIFIED
DIMENSIONAL TOLERANCES ARE:
(.X) ± ... (.XXX) ± ...
(.XX) ± ... ANGLES ± ...

UNLESS OTHERWISE SPECIFIED,
ALL DIMENSIONS ARE GIVEN IN
INCHES, THIRD ANGLE PROJECTION

DRAWN BY
JHNU

MAT'L:

SCALE NONE

06 10/10 JHNU JHNU M. ADDED AGENCY COLUMN TO TABLE
L. REMOVED MARKINGS FROM PART VIEWS

10N006AT-NC FLD FLD DATE 2/06

SEE NOTES

DRAWING NO / CAD FILE DWG
10N006AT-NC B
SIZE

REV DATE BY CHK DESCRIPTION

ECN -R SUP

CHK'D

F