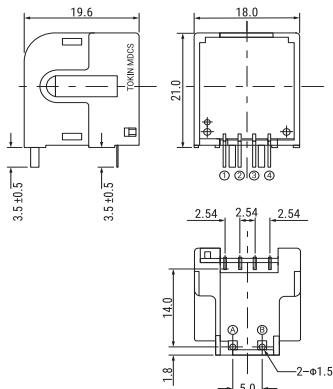


KEMET Part Number: LA12-10V21
(USEL10V2100000)



KEMET, LA12, Current, Through-Hole, DC/AC/Pulse, AC, DC and Pulse Current Detection



General Information	
Series:	LA12
Type:	Current
Style:	Through-Hole
Description:	Magnetic Direct Current Sensors
Features:	AC, DC and Pulse Current Detection
Lead:	Tab Leads
RoHS:	With Exemptions
REACH:	SVHC (Pb – CAS 7439-92-1)
Notes:	Primary Side Windings: 6 turns

Dimensions	
L	19.6mm NOM
W	18mm NOM
H	21mm NOM
LL	3.5mm +/- 0.5mm

Specifications	
Temperature Range:	-10/+75°C
Voltage AC:	2000 per minute
Residual Voltage:	2500 V +/- 0.06 V
Power Supply Voltage:	12 V +/- 5% (30mV MAX)
Insulation Withstanding Voltage:	2000 VAC per minute
Insulation Resistance:	500 MOhms (At 500 VDC, between wires and terminal)
Current:	10 Amps

Packaging Specifications	
Packaging:	Tray
Packaging Quantity:	400
Component Weight:	9 g

Statements of suitability for certain applications are based on our knowledge of typical operating conditions for such applications, but are not intended to constitute - and we specifically disclaim - any warranty concerning suitability for a specific customer application or use. This Information is intended for use only by customers who have the requisite experience and capability to determine the correct products for their application. Any technical advice inferred from this Information or otherwise provided by us with reference to the use of our products is given gratis, and we assume no obligation or liability for the advice given or results obtained.

