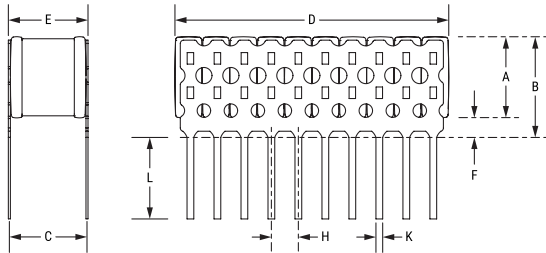


KPS-MCL Indust C0G HT200C, Ceramic, 0.047 uF, 10%, 2000 VDC, C0G



Dimensions	
D	26.9mm MAX
L	6.35mm MIN
H	2.54mm +/-0.127mm
F	1.397mm +/-0.25mm
A	6.6mm MAX
B	8.64mm MAX
C	6.35mm +/-0.635mm
E	7.62mm MAX
K	0.5mm +/-0.05mm

Packaging Specifications	
Packaging:	Waffle, Box
Packaging Quantity:	25

General Information	
Series:	KPS-MCL Indust C0G HT200C
Style:	Leaded Stacked Chip
Description:	Low Loss, Low ESR, Stacked Ceramic Chips
Features:	200C, Low ESR, High Thermal Stability, Bulk Capacitance
RoHS:	With Exemptions
REACH:	SVHC (Pb – CAS 7439-92-1)
Termination:	Silver
Lead:	Straight Leads
AEC-Q200:	No
Notes:	Number of chips in this stack: 10.

Specifications	
Capacitance:	0.047 uF
Capacitance Tolerance:	10%
Voltage DC:	2000 VDC
Dielectric Withstanding Voltage:	2400 VDC
Temperature Range:	-55/+200°C
Temperature Coefficient:	C0G
Dissipation Factor:	0.1% 1 kHz 25C
Aging Rate:	0% Loss/Decade Hour
Insulation Resistance:	21.28 GOhms