

SD

KTH-2252

REVISIONS

ISSUE CHANGES

0	ER 37486 KH 1201/97
---	------------------------

KTH2252S

SCALE 2:1

APPROX SURFACE AREA

USED ON 7703-11, 7705-11

REF:

CRIMP DIE

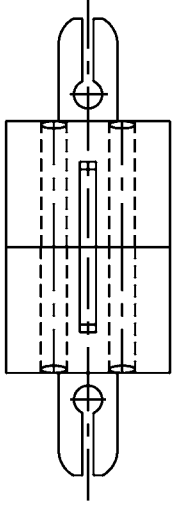
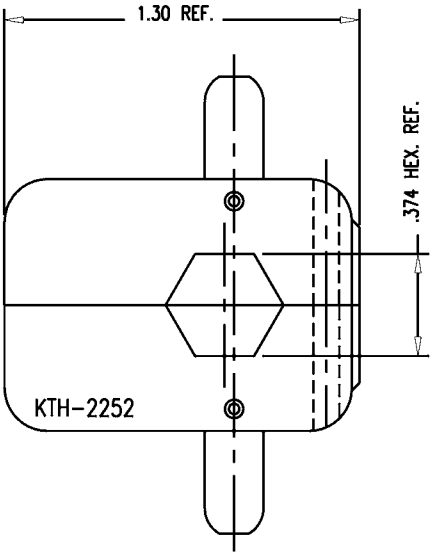
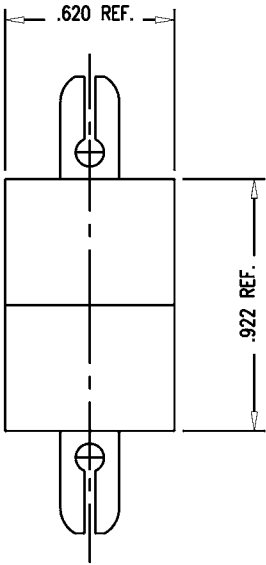
DRAWN KH DATE 12/01/97

DESIGN LJ DATE 12/02/97

APPR. DATE

**KINGS**  
ELECTRONICS CO., INC.  
TUCKAHOE, NEW YORK 10707

KTH-2252



NOTES:

- 1. MATERIAL: ALLOY STEEL
- 2. FINISH: BLACK OXIDE (AFTER HEAT TREATING).
- 3. FOR USE WITH BELDEN 9267, BIW 100690C-G20, MOHAWK M80248 & GEPCO/COMMSCOPE 7811, 7812 & 7814 CABLE.

SD