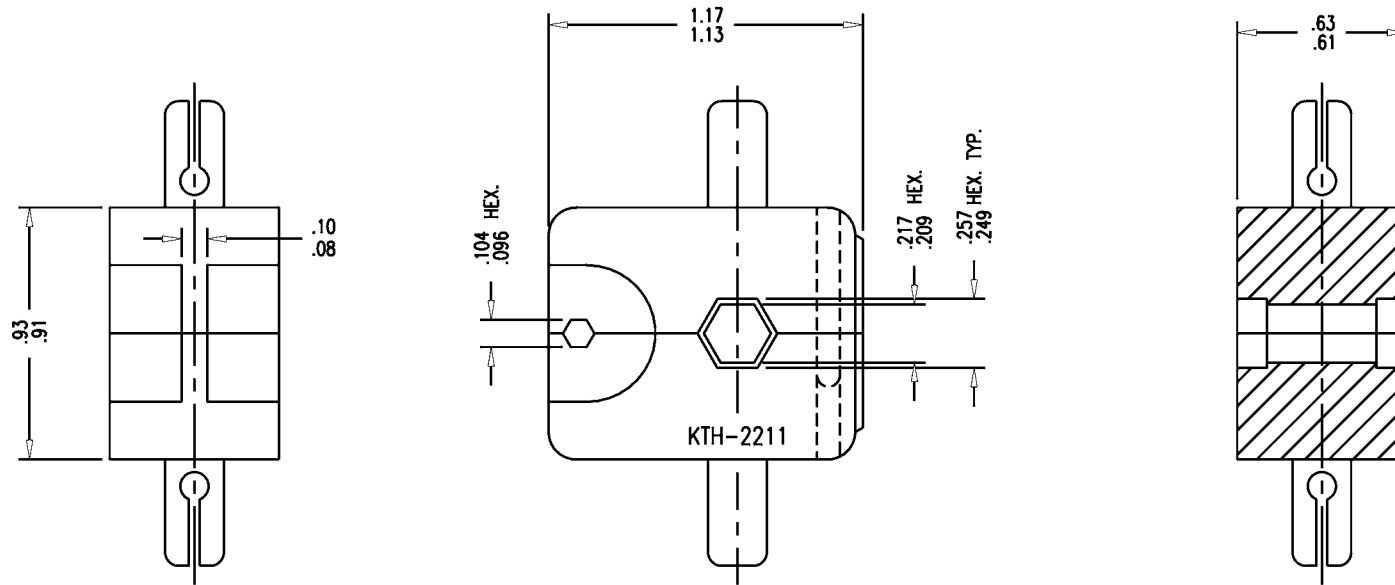


GSD

KTH-2211

REVISIONS

ISSUE	CHANGES
0	ER 33868 KH 04/21/92



NOTES:

1. FOR USE WITH BOEING S280W503-2 & ADAMS RUSSELL FC14Z CABLES.
2. FINISH: BLACK OXIDE

KAM1926

SCALE 2:1

APPROX SURFACE AREA

WAS: E-17390-3

USED ON

REF: BOEING

CRIMP DIE

DRAWN KH DATE 04/21/92

DESIGN JT DATE 04/22/92

APPR. DATE

KINGS
ELECTRONICS CO., INC.
TUCKAHOE, NEW YORK 10707

GSD

KTH-2211