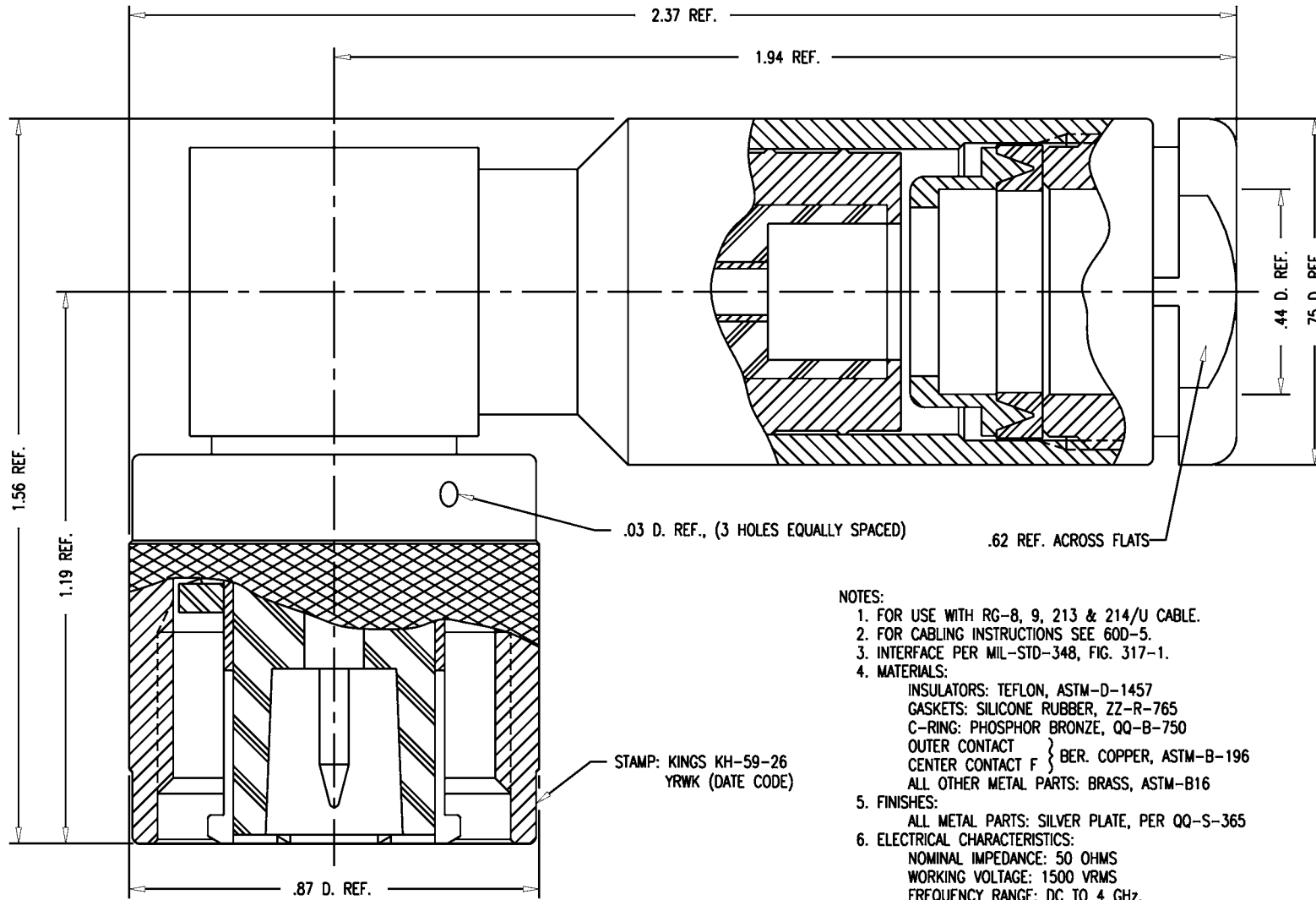


DASH NO.	M CODE	MADE FROM
----------	--------	-----------

GSD

KH-59-26

REVISIONS	
ISSUE	CHANGES
6	CN 33595 E REDRAWN WJM 12/13/91
7	CN 38454 C TML 11/21/01
8	CN 39242 E HVN 03/15/05
9	CN 39307 B JLA 07/27/05



- NOTES:**
- FOR USE WITH RG-8, 9, 213 & 214/U CABLE.
 - FOR CABLING INSTRUCTIONS SEE 60D-5.
 - INTERFACE PER MIL-STD-348, FIG. 317-1.
 - MATERIALS:**
 INSULATORS: TEFLON, ASTM-D-1457
 GASKETS: SILICONE RUBBER, ZZ-R-765
 C-RING: PHOSPHOR BRONZE, QQ-B-750
 OUTER CONTACT } BER. COPPER, ASTM-B-196
 CENTER CONTACT F }
 ALL OTHER METAL PARTS: BRASS, ASTM-B16
 - FINISHES:**
 ALL METAL PARTS: SILVER PLATE, PER QQ-S-365
 - ELECTRICAL CHARACTERISTICS:**
 NOMINAL IMPEDANCE: 50 OHMS
 WORKING VOLTAGE: 1500 VRMS
 FREQUENCY RANGE: DC TO 4 GHz.
 - MARK PACKAGE:** HS6087-2
 KH-59-26
 91836
 YRWK (DATE CODE)

KH-59-26SR8

SCALE	4:1		
APPROX SURFACE AREA			
USED ON			
REF:	McD. Douglas HS6087-2		
PLUG, ANGLE, HN			
DRAWN	WJM	DATE	12/13/91
DESIGN	MJB	DATE	02/05/92
APPR.		DATE	

KINGS
 ELECTRONICS CO., INC.
 ROCK HILL, SOUTH CAROLINA 29730

KH-59-26

GSD