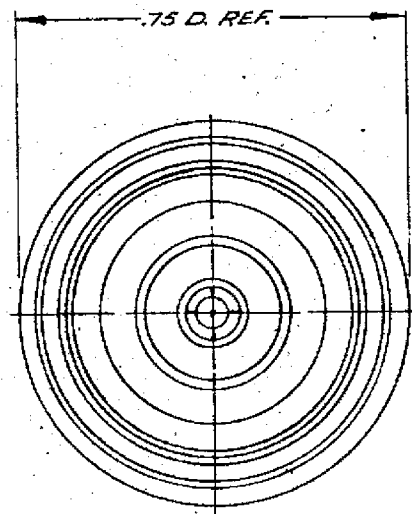
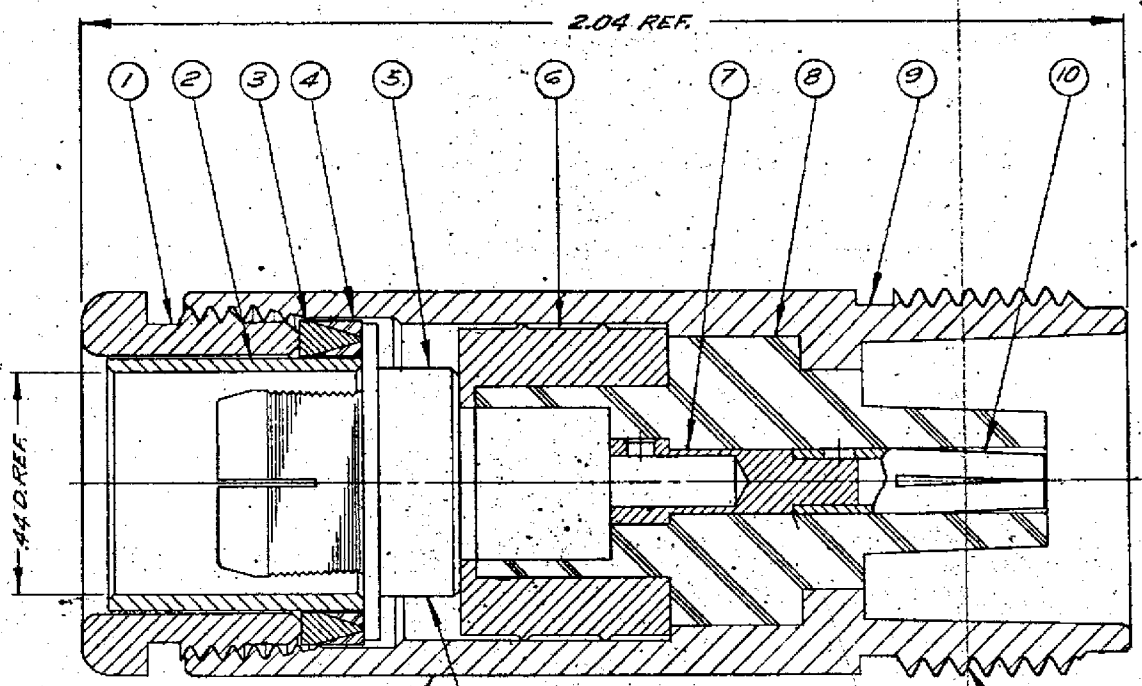


DASH NO.	DESCRIPTION	MADE FROM
----------	-------------	-----------

REVISIONS	
ISSUE	CHANGES
9	CN 16734 E GA 1 FEB 77

KH-39-12



STAMP: KINGS KH-39-12

STAMP: PAT. 3195098

$\frac{16}{32}$  - 20 UNEF-2A THREAD

NOTES:

1. FOR USE WITH RG-9, 9A, 9B & 214/U CABLE.
2. FOR CABLING INSTRUCTION SEE CP-208A.
3. FOR CABLE TRIMMING USE KTJ-23 & KTD-82.
4. FOR FORMING USE CRIMP DIE SIZE 04.

ITEM	REQ'D	DESCRIPTION	PART NO.
9	1	BODY	
8	1	INSULATOR	
7	1	HN CONTACT ASS'Y F	60D-6-M07
6	1	RETAINER	
5	1	K-GRIP	S-89-351-M07
4	1	GASKET	571-3-M99
3	1	GLAND	S-89-359-M07
2	1	K-GRIP SLEEVE	S-89-24-2-M07
1	1	CLAMP NUT	S-89-35-5-M07

UNLESS OTHERWISE SPECIFIED:

1. TOLERANCES: FRACTIONS & 2 PLACE DECIMALS  $\pm .010$   
3 PLACE DECIMALS  $\pm .004$  ANGLES  $\pm 0' 30''$   
T. I. R. CONCENTRICITY OF ANY 2 DIAMETERS MAY NOT EXCEED HALF THE SUM OF THEIR TOLERANCES.
2. REMOVE ALL BURRS. BREAK SHARP EDGES .005 MAX.
3. NO FILLETS PERMITTED.
4. SURFACE ROUGHNESS 63 MICROINCHES RMS MAX.
5. ALL DIMENSIONS PRIOR TO PLATING.

USED ON:	
REF:	
FINISH	
SPEC.	
MATL.	
SPEC.	
<b>HN JACK</b>	
DRAWN BG.	DATE 21 FEB 73
APPR. B.T.	DATE 22 FEB 73
<b>KINGS ELECTRONICS</b> 40 MARBLEDALE ROAD TUCKAHOE, N. Y. 10707	
<b>KH-39-12</b>	