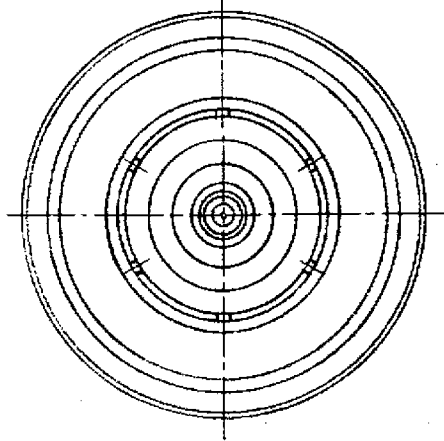
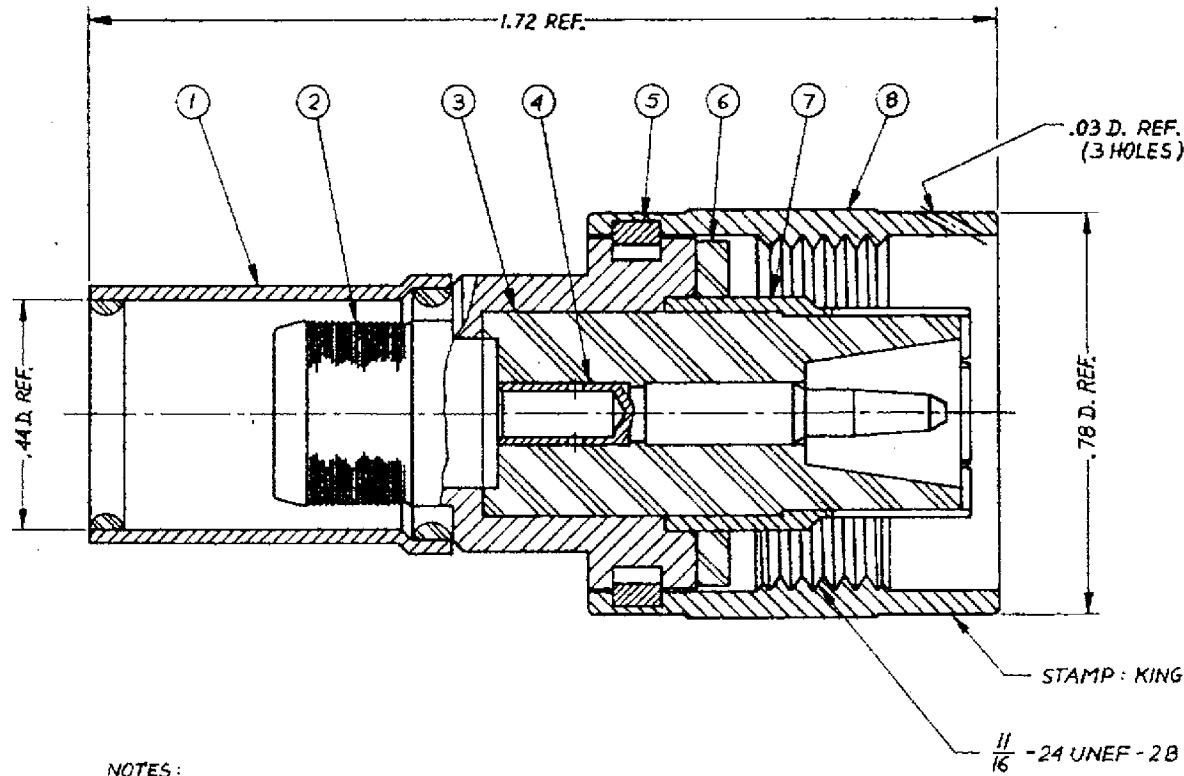


DASH NO.	M CODE	MADE FROM
----------	--------	-----------



- NOTES:
1. FOR USE WITH RG-393/U.
 2. FOR CABLE TRIMMING USE KTU-150 & KTD-138.
 3. FOR CRIMPING USE DIE SIZE 105.
 4. FOR CABLING INSTRUCTIONS SEE CP-5402.
 5. ITEM ④ TO BE SUPPLIED UNASSEMBLED.
 6. MARK PACKAGE: KINGS KG-59-34-M06
XXXX (DATE CODE)

UNLESS OTHERWISE SPECIFIED:	
1. TOLERANCES FRACTIONS & 2 PLACE DECIMALS ± .010	2. REMOVE ALL BURRS, BREAK SHARP EDGES .005 MAX.
3 PLACE DECIMALS ± .004	3. NO FILLETS PERMITTED.
ANGLES ± 0°30'	4. SURFACE ROUGHNESS 63 MICROINCHES RMS MAX.
T. I. R. CONCENTRICITY OF ANY 2 DIAMETERS MAY NOT EXCEED HALF THE SUM OF THEIR TOLERANCES	5. ALL DIMENSIONS PRIOR TO PLATING.
	6. ALL PLATING IN ACCORDANCE WITH KER 10004.

KG-59-34-M06
(SHEET 1 OF 2)

S-D

REVISIONS	
ISSUE	CHANGES
0	ER 30342 J.Z.B. 13 JAN. 89
1	CN 31044 C KH 9 AUG 89

S-D

SCALE 4:1	
APPROX SURFACE AREA	
WAS: E-14919	
USED ON	
REF BOEING	
SC PLUG	
DRAWN H.Z.B.	DATE 13 JAN 89
APPR	DATE 17 JAN 89
APPR	DATE
 KINGS ELECTRONICS CO. TUCUMCUM, ILL. 62451	
KG-59-34-M06 (SHEET 1 OF 2)	