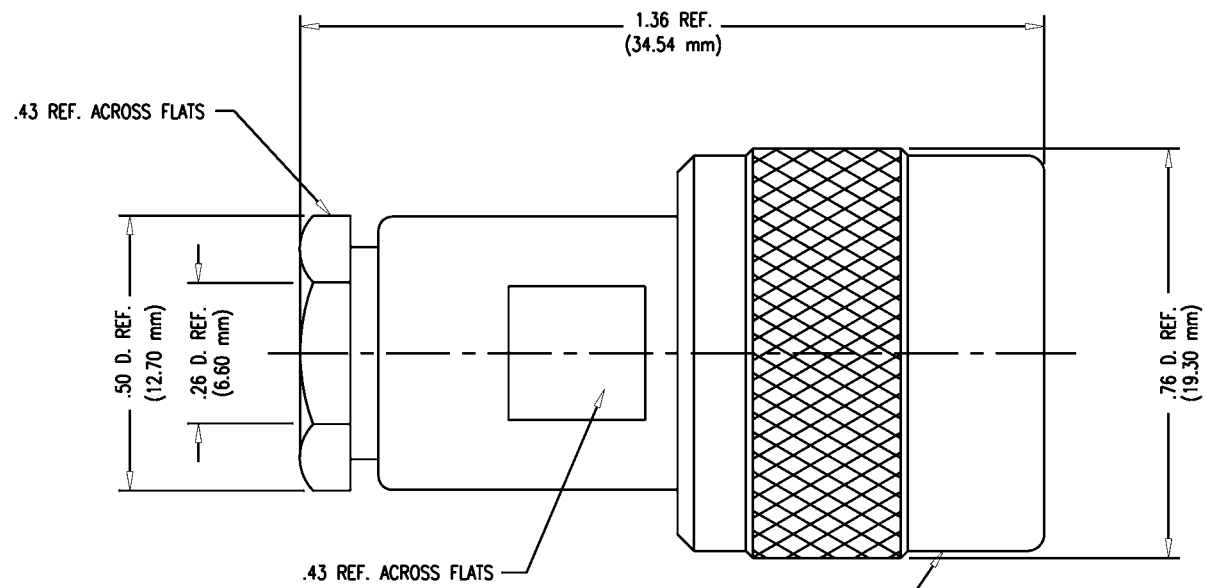


SD



NOTES:

1. FOR USE WITH RG-59, 62, 71 & 210/U CABLES.
2. FOR CABLING INSTRUCTIONS SEE CP-1013-3.
3. INTERFACE PER MIL-STD-348, FIG. 302-1.
4. MATERIALS:
  - INSULATOR: TEFLON, ASTM-D-4894
  - GASKETS: SIL. RUB., ZZ-R-765
  - K-GRIP SLEEVE: COM. BRONZE, ASTM-B-135
  - SPRING WASHER } BER. COP., ASTM-B-196
  - OUTER CONTACT }
  - ALL OTHER PARTS: BRASS, ASTM-B16
5. FINISHES:
  - CENTER CONTACT: GOLD PLATE PER MIL-G-45204
  - OUTER CONTACT & SPRING WASHER: SILVER PLATE PER QQ-S-365
  - ALL OTHER METAL PARTS: SILVER PLATE PER QQ-S-365
6. ELECTRICAL CHARACTERISTICS:
  - NOMINAL IMPEDANCE: 50 OHMS
  - VOLTAGE RATING: 1000 VRMS
  - FREQUENCY RANGE: DC TO 11 GHz

STAMP: 91836 M39012/15-0001  
KD-59-135 YRWK (DATE CODE)

M39012/15-0001

REVISIONS	
ISSUE	CHANGES
0	ER 6668 HFE 10/10/68
1	CN 9859 A WLA 06/22/71
2	CN 15062 A MJB 12/18/75
3	CN 23168 E GJG 03/24/82
4	CN 32256 A LNM 06/05/90
5	CN 37574 C REDRAWN TML 02/02/00

KD59135S			
SCALE	4:1		
APPROX SURFACE AREA			
	KD-59-135		
USED ON			
REF:	SUPERSEDES 627B/U		
PLUG, C			
DRAWN	HFE	DATE	09/26/68
DESIGN		DATE	
APPR.	LI	DATE	10/10/68
<b>KINGS</b> ELECTRONICS CO., INC. ROCK HILL, SOUTH CAROLINA 29730			
M39012/15-0001			

SD