

# GSD

KC-79-150

**REVISIONS**

ISSUE	CHANGES
3	CN 20471 D LI 04/30/80
4	CN 38547 D REDRAWN TML 04/29/02
5	CN 38655 C BDH 11/15/02

KC-79-150S

SCALE 4:1

APPROX SURFACE AREA

USED ON

REF: ECHO SCIENCES P.O. No. J-23182

RCPT, ISO GRD, BNC

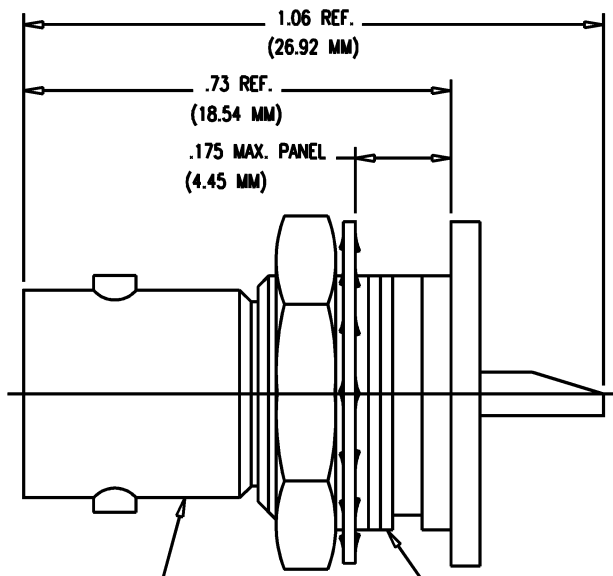
DRAWN CT DATE 06/04/85

DESIGN DATE

APPR. MJB DATE 06/06/85

**KINGS**  
ELECTRONICS CO., INC.  
ROCK HILL, SOUTH CAROLINA 29730

KC-79-150

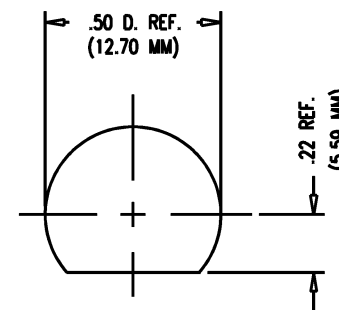
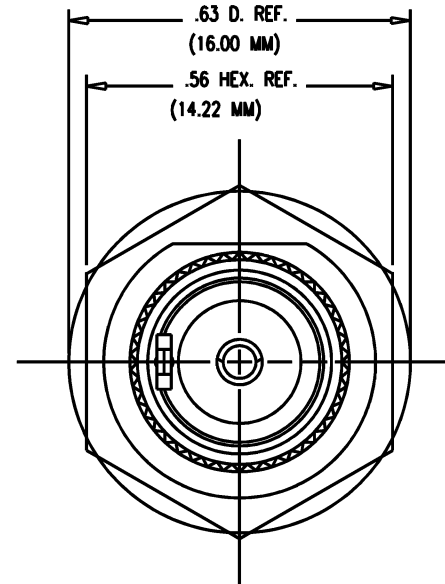


STAMP: KINGS KC-79-150  
YRWK (DATE CODE)

1/2-28NEF-2 TH'D

**NOTES:**

- MATERIALS:**  
INSULATORS: TEFLON, ASTM-D-1457  
LOCKWASHER: PHOS. BRONZE, QQ-B-750  
CENTER CONTACT } BER. COP., ASTM-B-196  
LUG }  
ALL OTHER PARTS: BRASS, ASTM-B16
- FINISHES:**  
CENTER CONTACT: SILVER PLATE PER QQ-S-365  
ALL OTHER METAL PARTS: KINGS TARNISH RESISTANT FINISH (TR-5)
- ELECTRICAL CHARACTERISTICS:**  
NOMINAL IMPEDANCE: 50 OHMS  
VOLTAGE RATING: 500 VRMS  
FREQUENCY RANGE: DC TO 4 GHz



MOUNTING HOLE

# GSD