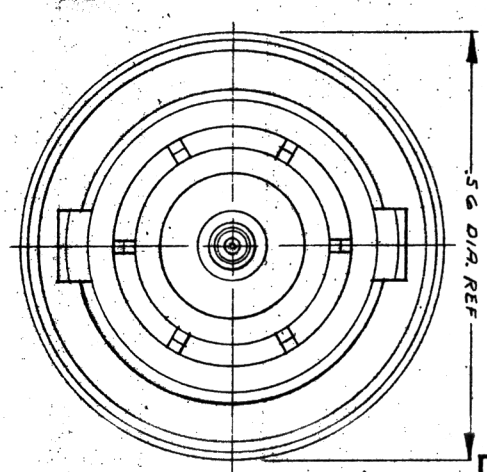


NOTES:

1. FOR USE WITH RG-780, 1804, 1808, 1957, 1957 A/U CABLES.
2. FOR CABLE TRIMMING USE KTU-153 & KYD-161.
3. FOR FORMING USE CRIMP PIR SIZE 67.
4. FOR CABLING INSTRUCTIONS SEE CP-5401.
5. ITEMS ①, ②, ③ & ④ TO HAVE TR-5 FINISH.

UNLESS OTHERWISE SPECIFIED:  
 1. TOLERANCES: FRACTIONS & 2 PLACE DECIMALS ±.010  
 3. PLACE DECIMALS ±.004  
 7. 1.8 CONVENIENCE OF ANY 2 DIMENSIONS MAY NOT EXCEED HALF THE SUM OF THEIR TOLERANCES.  
 2. REMOVE ALL BURRS. BREAK SHARP EDGES .003 MAX.  
 3. NO CORNER RADIUSES & 90° ANGLES.  
 4. SURFACE ROUGHNESS 63 MICRONS RMS MAX.  
 5. ALL DIMENSIONS PRIOR TO PLATING.



KC-59-446

ITEM	REQD	DESCRIPTION	PART NO.
8	1	BNC CRIMP CAPTIVE CONTACT	1-569-3 M09
7	1	INSULATOR	
6	1	BAYONET SLEEVE	
5	1	GASKET	
4	1	SPRING WASHER	
3	1	WASHER	
2	1	K-GRIP BODY ASSY	
1	1	W/P K-GRIP SLEEVE	A-59-195-5-M06

REVISIONS	
ISSUE	CHANGES
0	ER 14362 4 UNITS
1	CN 15688A 4 UNITS JHP 23 APR 76

USED ON:

REF.:

FINISH:

SPEC.:

MATL.:

SPEC.:

BNC PLUG

DRAWN: GINO DATE: 24 MARCH 75

APP'D: L/ DATE: 4 APR 75

KINGS ELECTRONICS  
 40 MARLBOROUGH ROAD  
 TUCKAHOE, N. Y. 10707

KC-59-446