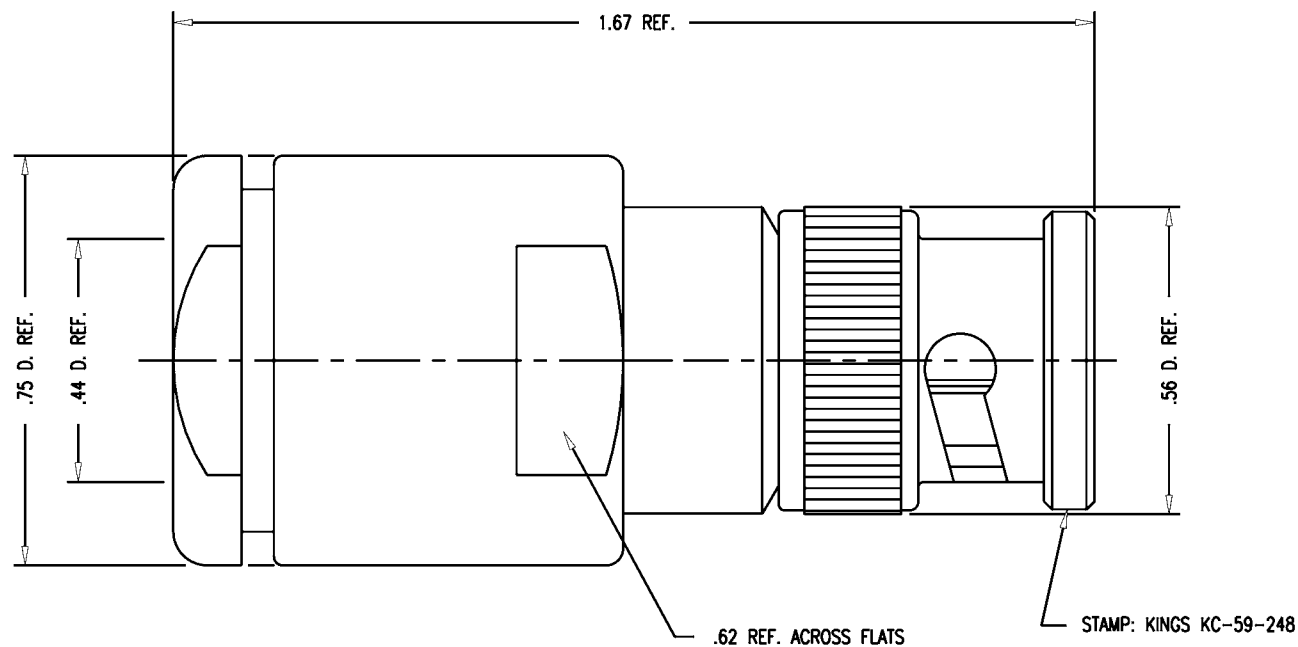


DASH NO.	M CODE	MADE FROM
----------	--------	-----------

# GSD



KC-59-248

### REVISIONS

ISSUE	CHANGES
4	CN 36679 E REDRAWN KH 11/06/95

KAM6211

#### NOTES:

- FOR USE WITH RG-8, 9, 213 & 214/U CABLE GROUPS.
- FOR CABLING INSTRUCTIONS SEE CP-1005.
- INTERFACE PER MIL-STD-348, FIG. 301-1.
- MATERIALS:
  - INSULATOR: TEFLON, ASTM-D-4894
  - GASKET: SILICONE RUBBER, ZZ-R-765
  - WASHER
  - SPRING WASHER } BER. COPPER, ASTM-B-196
  - OUTER CONTACT }
  - ALL OTHER METAL PARTS: BRASS, ASTM-B16
- FINISHES:
  - ALL METAL PARTS: SILVER PLATE, QQ-S-365
- ELECTRICAL CHARACTERISTICS:
  - NOMINAL IMPEDANCE: 50 OHMS
  - WORKING VOLTAFGE: 500 VRMS
  - FREQUENCY RANGE: DC TO 4 GHz.

SCALE 4:1

APPROX SURFACE AREA

USED ON

REF:

PLUG, BNC

DRAWN KH DATE 11/06/95

DESIGN MJB DATE 11/07/95

APPR. DATE

**KINGS**  
ELECTRONICS CO., INC.  
TUCKAHOE, NEW YORK 10707

# GSD

KC-59-248