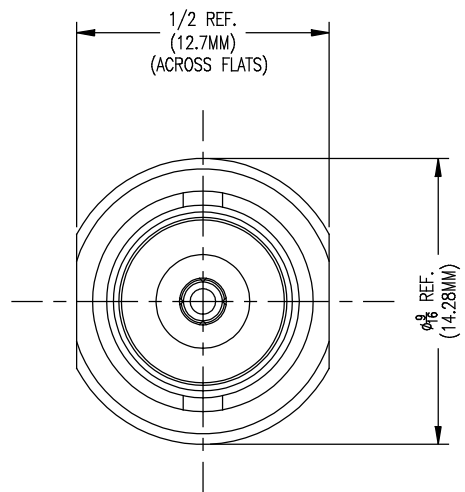
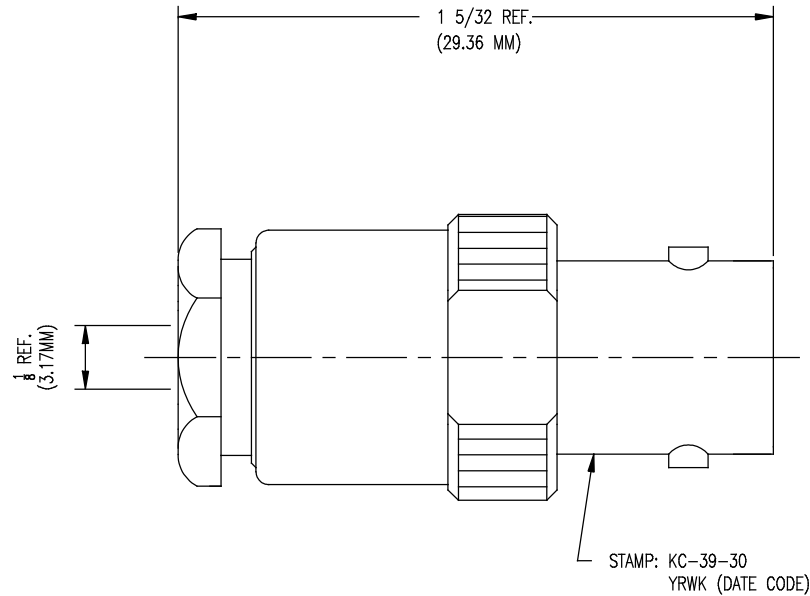


DASH NO.	M CODE	MADE FROM
----------	--------	-----------

GSD



KC-39-30

REVISIONS	
ISSUE	CHANGES
6	CN 39951 E REDRAWN DCT 5/1/7
7	CN 39975 C PMC 6/19/07

- NOTES:
- FOR USE WITH RG-174, 179, 187 & 188/U CABLE.
 - FOR CABLING INSTRUCTIONS SEE CP-1004.1
 - MATERIALS:
INSULATORS: TEFLON, ASTM-D-4894
GASKET: SIL. RUBBER, A-A-59588
CENTER CONTACT: BER. COPPER, ASTM-B-196
ALL OTHER METAL PARTS: BRASS, ASTM-B16
 - FINISHES:
CENTER CONTACT: HARD GOLD PLATE, PER ASTM-B488
ALL OTHER METAL PARTS: SILVER PLATE, ASTM-B700
 - ELECTRICAL CHARACTERISTICS:
NOMINAL IMPEDANCE: 50 OHMS
WORKING VOLTAGE: 500 VRMS
FREQUENCY RANGE: DC TO 4GHz.
 - INTERFACE PER MIL-STD-348, FIG. 301-2.

SCALE 4:1	
APPROX SURFACE AREA	
USED ON	
REF:	
BNC JACK	
DRAWN DCT	DATE 5/2/7
DESIGN	DATE
APPR.	DATE

GSD

KINGS
A Winchester Electronics Company
ROCK HILL, SOUTH CAROLINA 29730

KC-39-30