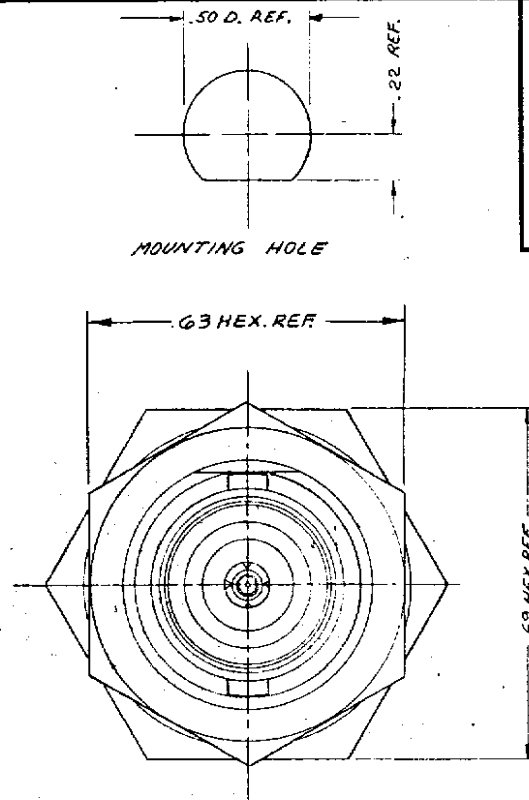
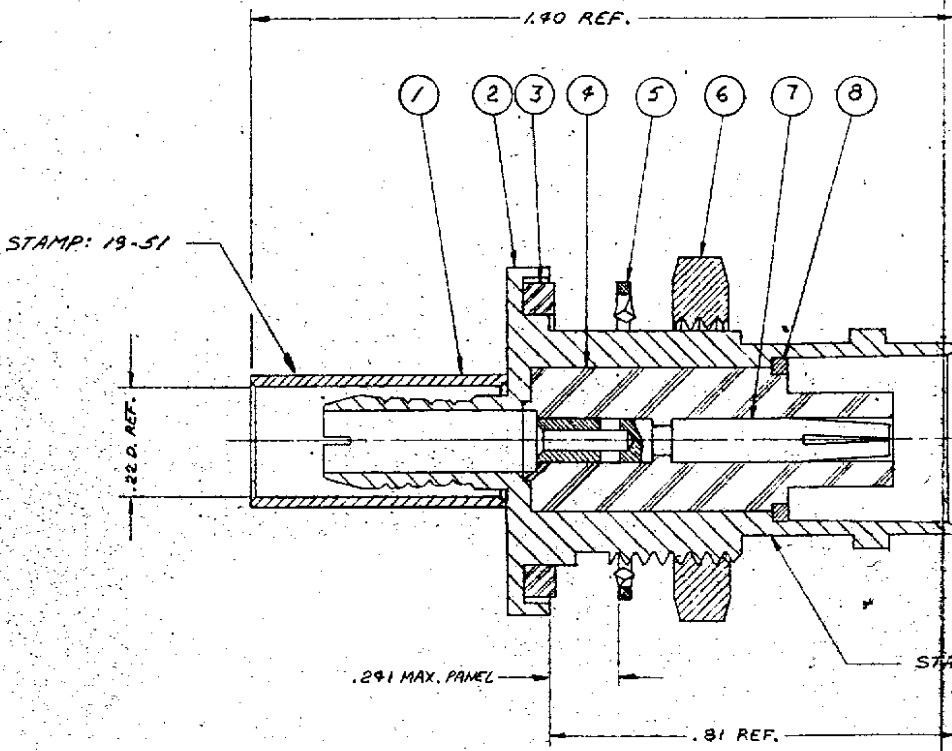


DASH NO.	DESCRIPTION	MADE FROM
----------	-------------	-----------



M39012/19-0503

REVISIONS	
ISSUE	CHANGES
0	ER 13620 JL 1 AUG 74
1	CN 13689A GA 5 AUG 74
2	CN 13841A M.J.E 11 OCT 74
4	CN 23168 E JEP 30 MAR 82
7	CN 28237 C CHC 18 AUG 86
8	CN 32279 A LNM 15 JUN 90

STAMP: 91836 M39012/19-0503
KC-19-249 XXXX
DATE CODE

- NOTES:
1. FOR USE WITH RG-192, 223 & 400/U CABLE GROUPS.
 2. FOR CABLE TRIMMING USE KTJ-113 & KTD-166.
 3. FOR FORMING USE CRIMP DIE SIZE 01.
 4. FOR CABLING INSTRUCTIONS SEE CP-965.

UNLESS OTHERWISE SPECIFIED:

- | | |
|--|--|
| 1. TOLERANCES: FRACTIONS & 2 PLACE DECIMALS ± .010 | 2. REMOVE ALL BURRS, BREAK SHARP EDGES .005 MAX. |
| 3 PLACE DECIMALS ± .004 | 3. NO FILLETS PERMITTED. |
| T. I. R. CONCENTRICITY OF ANY 2 DIAMETERS MAY NOT EXCEED HALF THE SUM OF THEIR TOLERANCES. | 4. SURFACE ROUGHNESS 63 MICROINCHES RMS MAX. |
| | 5. ALL DIMENSIONS PRIOR TO PLATING. |

9	1	CABLING INSTRUCTIONS	3-339-2MBB
8	1	RETAINING RING	
7	1	BNC CRIMP CAPTIVE CONTACT F	1-507-34M9D
6	1	HEX NUT	992A-9-MCT
5	1	LOCKWASHER	992A-12-MCT
4	1	INSULATOR	
3	1	GASKET	992A-10-M99
2	1	K-GRIP BODY	
1	1	K-GRIP SLEEVE	5-89-05-2-MCT

KC-19-249

USED ON:

REF:

FINISH

SPEC.

MATL

SPEC.

BNC BULKHEAD JACK

DRAWN W. D. DATE 1 MAY 74

APPR. LI DATE 22 JUL 74

KINGS ELECTRONICS
40 MARBLEDALE ROAD
TUCKAHOE, N. Y. 10707

M39012/19-0503

ITEM	REQ'D	DESCRIPTION	PART NO.
------	-------	-------------	----------

DIETZGEN 1984 13116

S-D