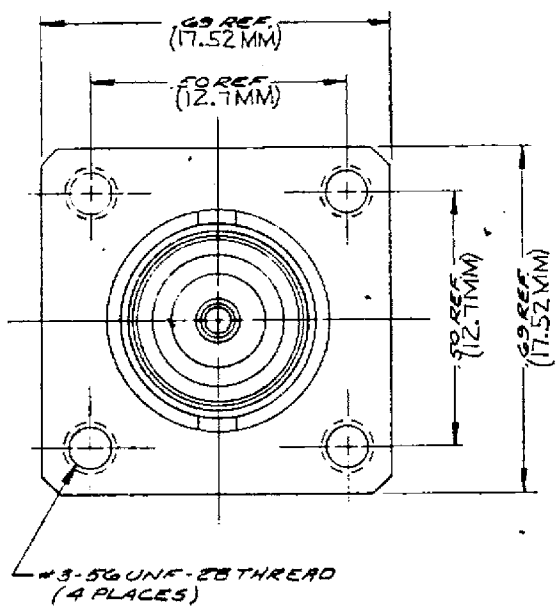
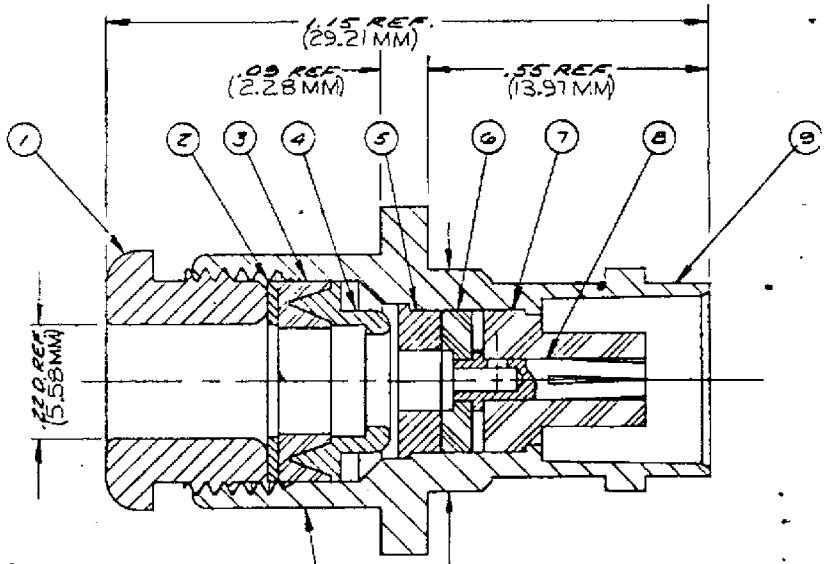


DASH NO.	M CODE	MADE FROM
----------	--------	-----------



STAMP:  
91836 M39012/18-0102  
KC-19-02 XXXX

DATE CODE

- NOTES:
- FOR USE WITH RG-58, 141, 142, 223 & 400/U CABLE GROUPS.
  - FOR CABLING INSTRUCTIONS SEE CP-1050.

UNLESS OTHERWISE SPECIFIED:

- TOLERANCES: FRACTIONS & 2 PLACE DECIMALS ± .010  
3 PLACE DECIMALS ± .004  
T. I. R. CONCENTRICITY OF ANY 2 DIAMETERS MAY NOT EXCEED HALF THE SUM OF THEIR TOLERANCES.
- REMOVE ALL BURRS, BREAK SHARP EDGES .005 MAX.
- NO FILLETS PERMITTED.
- SURFACE ROUGHNESS 63 MICROINCHES RMS MAX.
- ALL DIMENSIONS PRIOR TO PLATING.

REVISIONS

ISSUE	CHANGES
3	CN 3925 A MJB 4 DEC 78
4	CN 23169 E GL 16 APR 82
5	CN 32278 A LJM 14 JUN 90

M39012/18-0102  
(SHEET 1 OF 2)

S-D

S-D

SCALE: 4:1	
KC-19-02	
USED ON:	
REF:	
FINISH:	
SPEC. KER 10004	
MATERIAL:	
SPEC:	
BNC PANEL JACK	
DRAWN: AMD	DATE: 4 MAY 87
APPR: MJB	DATE: 6 MAY 87
KINGS ELECTRONICS 40 MARLBOROUGH ROAD TUCKAHOE, N. Y. 10707	
M39012/18-0102	

S-D

(SHEET 1 OF 2)