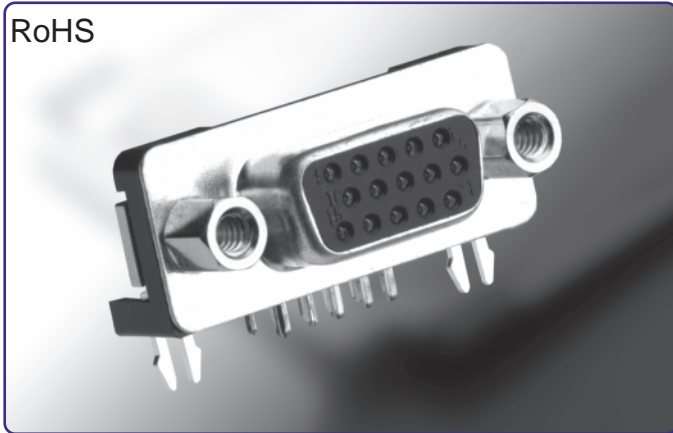


RoHS



K61X Series

High Density Right Angle PCB Mount Compact Footprint

Features

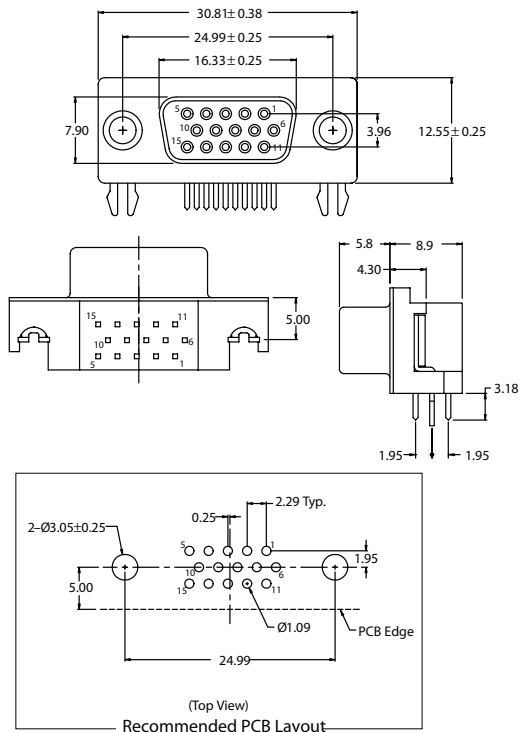
- 15 Pin High Density D-Subminiature Receptacle, Right Angle PCB Termination, Compact Footprint
- Available in Reflow Compatible, High Temperature Plastic

VESA Features

- Contact #9 Recessed 0.050" (1.27mm) to Allow Last Mate/First Break on 5V Supply Voltage
- Blue PBT Insulator Signifies 5V Capability and Full Feature
- AccessBus Capability in Accordance with Video Electronics Standard Association (VESA)
- Meets Display Data Channel (DDC) Standard

K61X Series Dimensions

Dimensions in mm



D-SUBMINIATURE CONNECTORS

K61X Series

Documentation & Ordering Information

Kycon Part #

Part Number Builder

Series	Shell Size	Contact Type	Mounting Option	Plating Options	VESA Option
Series K61X - High Density D-Subminiature Connector, Right Angle PCB Termination	Contact Shell Size E - 15 Contacts	Contact Type S - Socket Contact (Receptacle)	Mounting Option N - With Board Locks and 4-40 Riveted Threaded Inserts NJ - With Board Locks, Riveted Threaded Inserts and 4-40 Hex. Jack Screws Assembled to Connector	Plating Option Blank - Gold Flash 15 - 15µ" Gold 30 - 30µ" Gold	VESA Option Blank - Standard VESA - VESA Compliant Version (Not available with N15 & NJ30)

Contact Kycon for other options